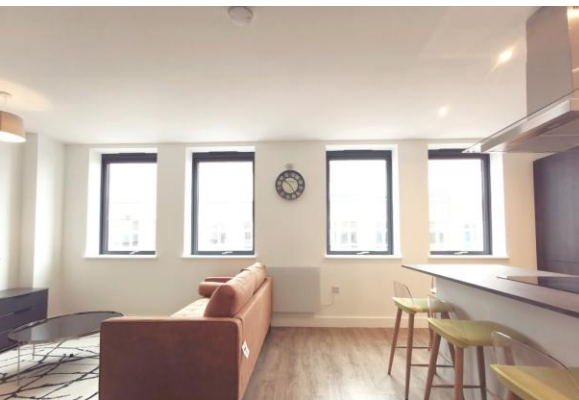


Davidson



Asking Price Of £387,600

- 30 Boutique Apartments
- 250 Years Leasehold
- £1.50 per sq ft service charge
- Duplex Apartment

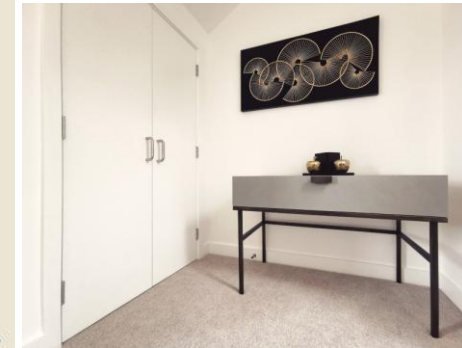
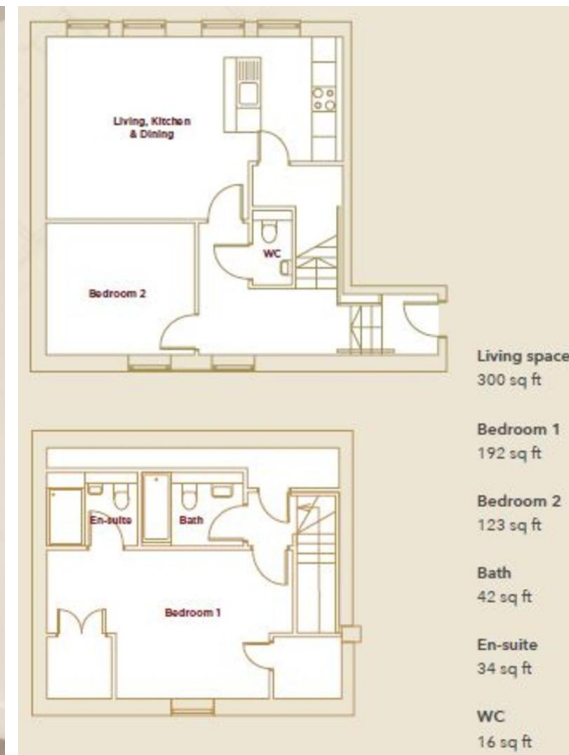
Unit 3.3 Treasure House, Carver Street, Jewellery Quarter, Birmingham,

TREASURE HOUSE | Luxury 2 Bed Duplex Apartment | Jewellery Quarter | 1044 Square Feet | FREE Furniture Pack! | New Build | Resident's Permit Parking | Close Proximity to Colmore Row Business District

Service Charge: £1.50/psft

Ground Rent: £250.00/pa

Years On Lease: 250 years



Treasure House's Unit 3.3 is a 1044 square foot 2 bedroom duplex apartment located on the third and fourth floors comprising of an entrance hall leading to elegant open-plan living space with dining area and fully integrated designer kitchen, with a bedroom and bathroom on the same level, with the stairs leading to an additional bathroom, and a spacious master bedroom with shower and bath en-suite facilities along with fitted wardrobes, with access to all of this via an audio door entry system.

There is also a delightful communal courtyard available to residents to sit, relax and escape the bustle and noise of the city. Ready to move in immediately, a **FREE** furniture pack is on offer with purchase!

Unit 2 Liberty Place, 26-38
Sheepcote Street, Birmingham,
West Midlands, B16 8AE

www.davidsonstates.co.uk
0121 455 7727
info@davidsonstates.co.uk

Agents Note: Whilst every care has been taken to prepare these particulars, they are for guidance purposes only. All measurements are approximate and for general guidance purposes only and whilst every care has been taken to ensure their accuracy, they should not be relied upon and potential buyers/tenants are advised to recheck the measurements.