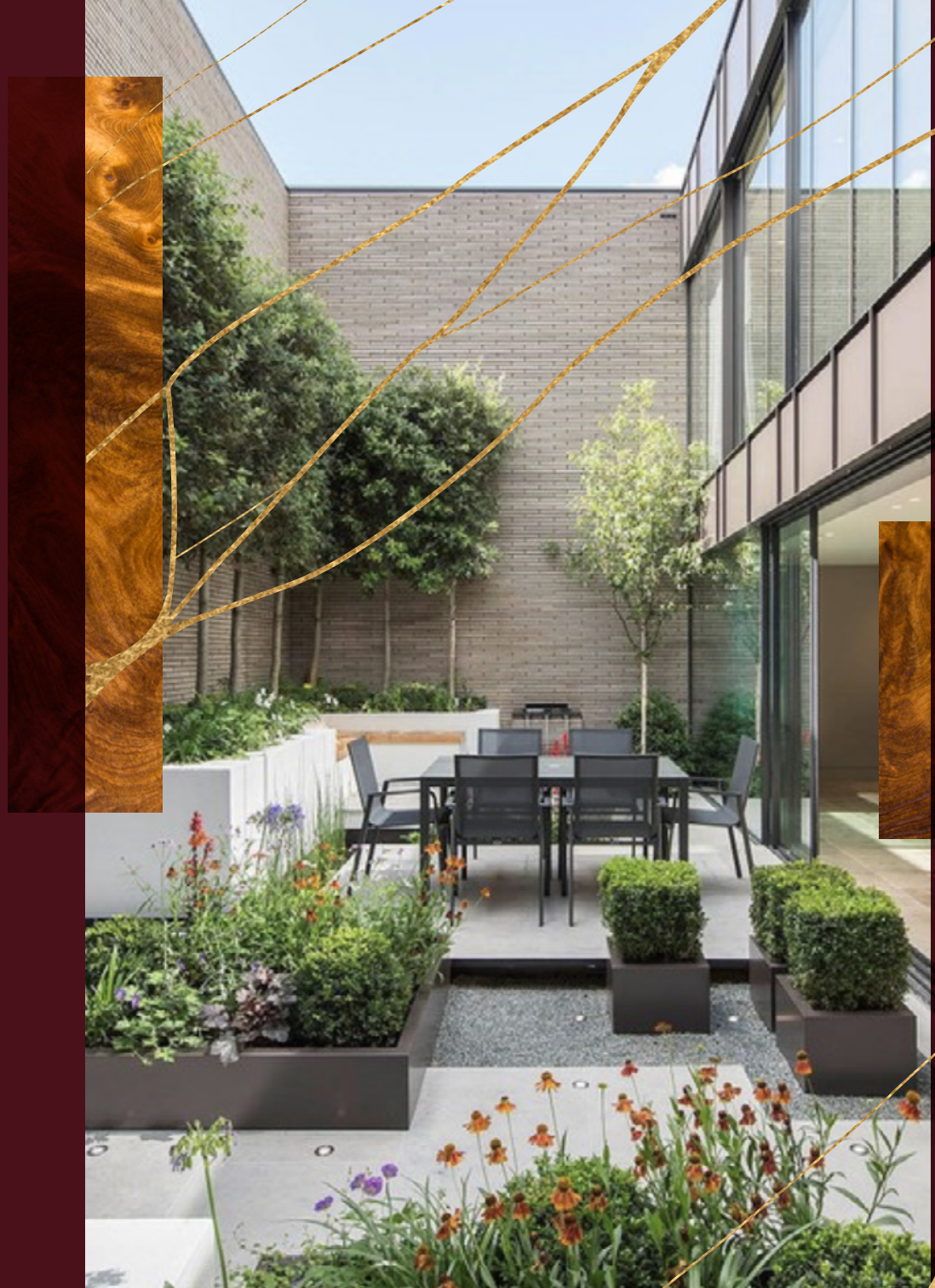





TREASURE HOUSE

Jewellery Quarter, Birmingham B1 3EG

**THE TRUE
TREASURE
LIES WITHIN.**




**TREASURE
HOUSE**

**RESERVE NOW
COMPLETION Q4 2020**

LUXURY AS YOU LIKE IT

Introducing Treasure House, a contemporary 5-storey building consisting of 30 high-quality luxury apartments. Situated in the heart of Birmingham's historic Jewellery Quarter, Treasure House offers the full benefits of city living, with a taste of luxury.

**ONE, TWO AND
THREE BEDROOM
APARTMENTS FROM
437-1,621 SQ FT
INCLUDING
EXTRAORDINARY
TOP FLOOR DUPLEXES**

PRICES START FROM £190,000



A WORLD CLASS LOCATION





IN LOVE WITH CITY LIVING

Described as a 'national treasure', the area is unlike any other historic townscape in the world, attracting a young, vibrant community of cultures and an abundance of craft bars, bustling cafés and stylish restaurants. And, with over 200 listed buildings nearby, you can still peer into the rich heritage of this iconic district of Birmingham, made famous by its array of artisan jewellers, goldsmiths and glassmakers, whose products were the envy of the world. It's of little surprise that over 6,000 residents already call the Jewellery Quarter their home.

A LIFESTYLE AND CULTURE DESTINATION

The rich and diverse history of the Jewellery Quarter is encapsulated in the many listed landmark buildings and infrastructures still standing today. Features like the St Paul's Church, which sits on top of the last Georgian Square in Birmingham and the extraordinary Edwardian Chamberlain clock really depict the imprint of prior generations and showcase just how special this district is.

The suburb still lives up to its name boasting the largest concentration of businesses producing jewellery in Europe. However, a recent resurgence of residential conversions and increased demand for the perks of inner-city living has seen the historic district transform into a unique residential urban village playing home to a hub of creative firms.

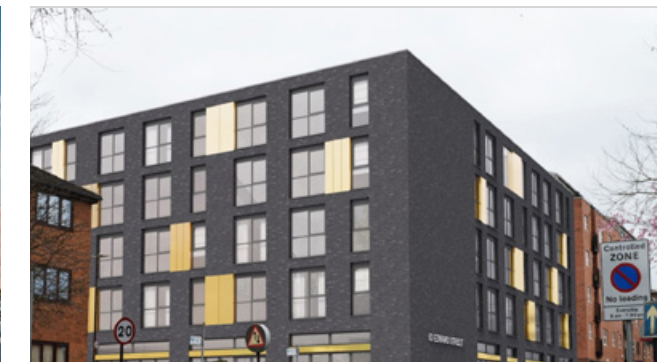
The area is also territory to a plethora of boutique shops, restaurants and independent galleries and museums, which adds a real sense of community.



AN EXCELLENT LOCATION FOR INVESTMENT

The UK is an excellent location for overseas investment. The exchange rate is good, the economy is optimistic, and land is a finite resource due to development restrictions. There is an ongoing shortage of housing in all sectors.

Being the youngest city in Europe, Birmingham truly is up and coming. The most entrepreneurial regional city in the UK, Birmingham is home to the strongest economy outside London and the subject of investment in several large-scale infrastructure projects; from the £550m Birmingham New Street Station to the £1.5bn Smithfield regeneration. With work underway on the development of one of Europe's most exciting rail projects in HS2 and the prospect of the Birmingham 2022 Commonwealth Games, England's Second City is becoming an incredibly attractive place to live, work and invest in.

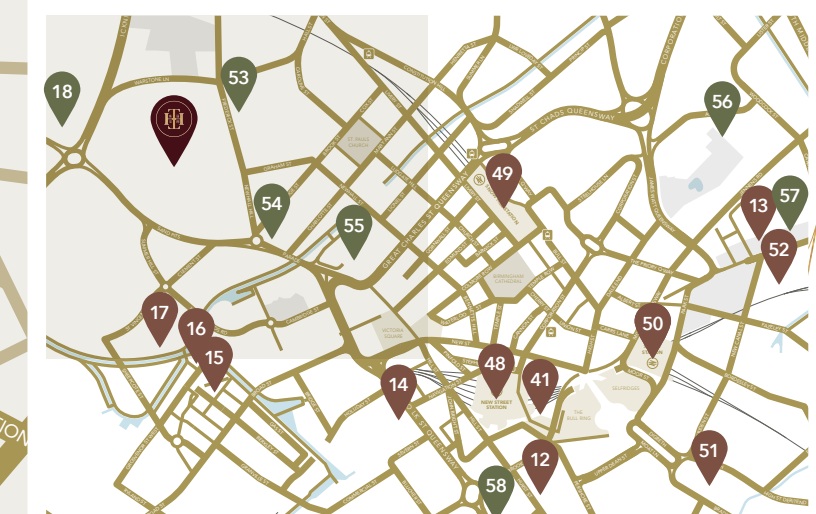
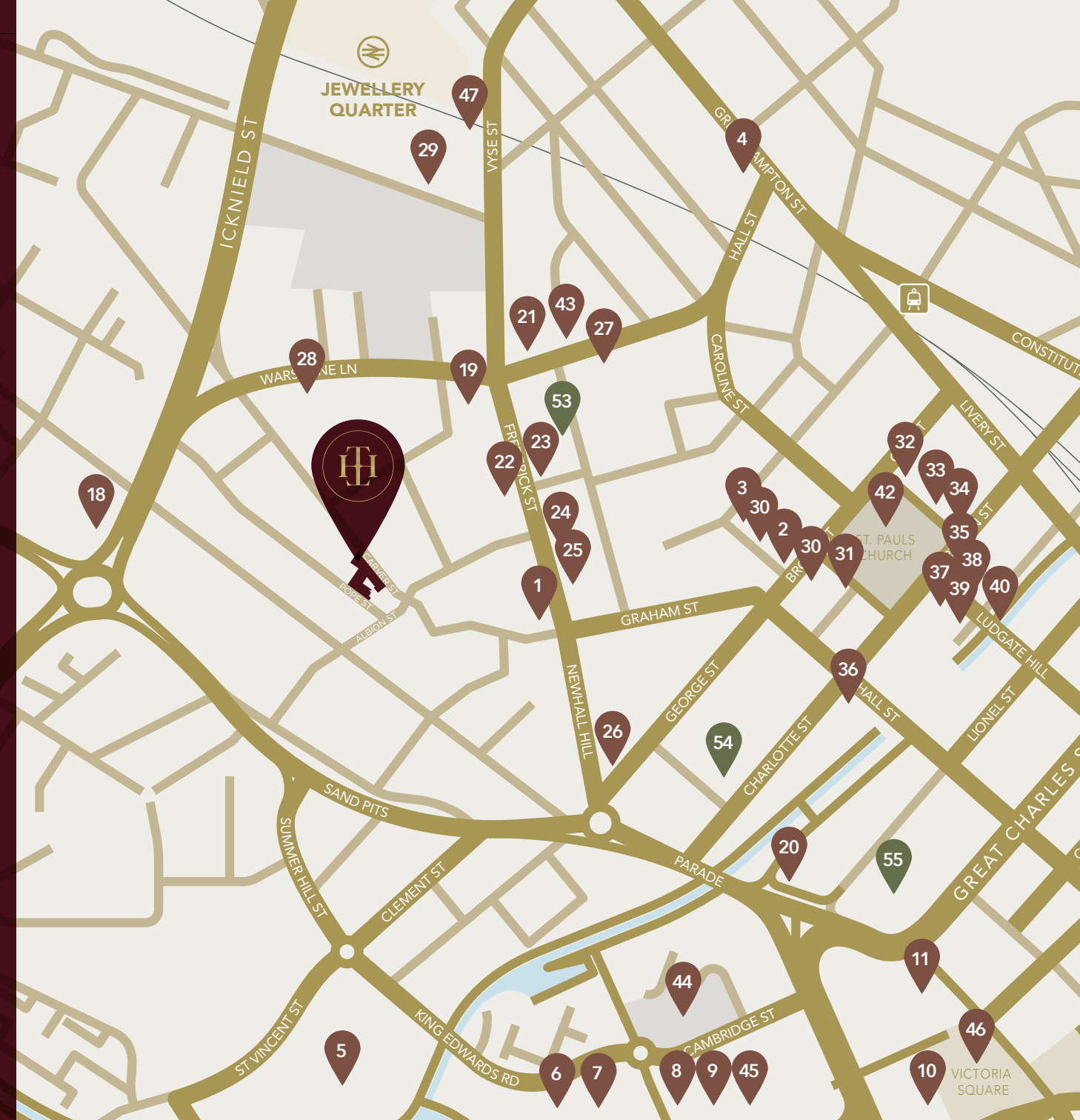


YOUR BASE FOR CITY LIFE

Located within touching distance of central Birmingham, the Jewellery Quarter facilitates suburban living with a city lifestyle.

Getting around the city and surrounding region is easy thanks to the network of West Midlands travel, including buses, trams and trains, with a plethora of things to see and do along the way. The area offers superb national and international transport links, with easy access to London via the M40 and M6 motorways, regular trains from Birmingham New Street Station and flights to a multitude of global destinations from Birmingham International Airport.

**TREASURE HOUSE,
CARVER STREET,
JEWELLERY QUARTER,
BIRMINGHAM
B1 3EG**



PLACES TO GO

1. Pen Museum
2. RBSA Gallery
3. St Paul's Gallery
4. The Blue Orange Theatre
5. Arena Birmingham
6. The ICC
7. Symphony Hall
8. Birmingham Repertory Theatre
9. The Library of Birmingham
10. Town Hall
11. Birmingham Museum & Art Gallery
12. Chinatown
13. Thinktank Science Museum
14. BBC Visitor Centre
15. IKON Gallery
16. Sea Life Centre
17. Lego Discovery Centre
32. Henry's Cantonese Restaurant
33. Saint Pauls House
34. Andersons Bar & Grill
35. The Jam House
36. The Queen's Arms
37. Locanta Italian
38. Cucina Rustica
39. The Actress & Bishop
40. Stirlings
41. Bullring & Grand Central

OUTDOOR SPACES

42. St Paul's Square
43. Golden Square
44. City Centre Gardens
45. Centenary Square
46. Victoria Square

EAT, DRINK & SHOP

18. Tesco Extra (24 hour)
19. Tesco Express
20. Opheem
21. The Rose Villa Tavern
22. Ana Rocha Bar & Gallery
23. The Button Factory
24. Jojolapa Nepalese Bar & Kitchen
25. 1000 Trades
26. Rajdoot
27. The Wilderness
28. The Red Lion
29. The Rebel Chicken
30. Lasan
30. Pasta Di Piazza
31. The Rectory

TRANSPORT

47. Jewellery Quarter Station
48. New Street Station
49. Snow Hill Station
50. Moor Street Station
51. Birmingham Coach Station
52. Proposed HS2 Station

EDUCATION

53. School of Jewellery
54. University College Birmingham
55. University College Birmingham
56. Aston University
57. Birmingham City University

FINANCE

58. Bank of China

IT'S ALL IN THE DETAIL

Treasure House is an all new residential development of apartments. Exteriors are styled to be respectful to the tradition of the area, whilst interiors enjoy a high standard, contemporary fit out to the latest specification which ensures the joys don't end when the curtains close. You will feel right at home in this comfortable and luxurious space with the complete wow factor it offers.



FIXTURES & FITTINGS

Treasure House is complete with the highest quality kitchens and bathrooms from a contemporary range, with state of the art lighting and decorative finishes, suitable for loft-style living.

Luxury wood vinyl flooring, expressive art and feature balconies with designer lighting features complete the look.

Outside communal areas offer beautiful landscaping, planting and seating perfect for city living.



KITCHENS

- Integrated fridge/freezer
- Integrated dishwasher
- Integrated washer/dryer
- Single oven with integrated microwave
- Induction hob
- Professionally designed kitchens in choice of colours
- Laminate work surfaces (Upgraded to granite for the duplexes)
- LED downlighting

BATHROOMS

- Limestone effect ceramic floor tiling
- Grohe ceramic sanitaryware
- Glass wall mounted mirror
- Tempesta shower system over the bath with screen and full height white satin tiling
- LED downlighting

EN-SUITE BATHROOMS

- Limestone effect ceramic floor tiling
- Grohe ceramic sanitaryware
- Glass wall mounted mirror
- Just Trays Merlin shower tray and glass shower screen
- LED downlighting

GENERAL

- Sierra luxury wood effect vinyl flooring to kitchen/living area
- Pebble shade carpet to bedrooms (Pebble Grey is a soft, cool, enchanting grey with a misty undertone. OONN 53/000).
- Dimplex Girona white glass fronted electric panel heaters
- Three double power sockets in master bedrooms, two double power sockets in all other bedrooms and seven double power sockets in living/kitchen areas
- Audio door entry systems to apartments
- Secure mailboxes provided in ground floor courtyard area
- 30 secure cycle storage spaces available
- TV and telecoms points in bedroom and living area
- Lift access to all floors
- CCTV in communal areas

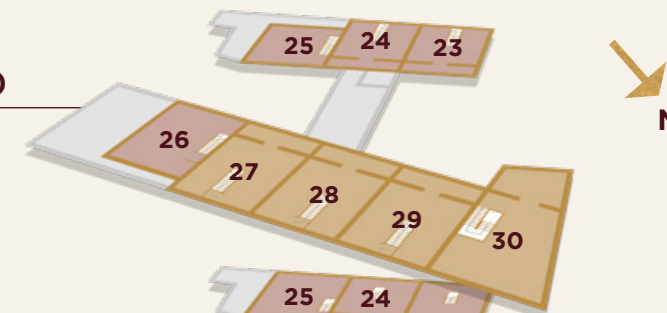




FLOOR BY FLOOR

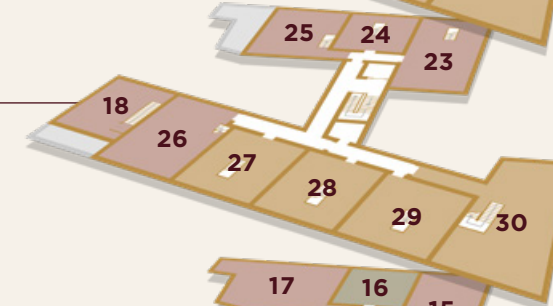
Connecting you between levels is an 8 person lift and staircase. The ground floor level contains an attractive courtyard with private underground cage storage, secure private parking to some duplexes and cycle storage. A high quality, secure entrance door system ensures your treasures stay within Treasure House.

FOURTH FLOOR (DUPLEX)



THIRD FLOOR (DUPLEX)

Apartments 23-25 Page 34
 Apartments 26-29 Page 36
 Apartments 30 Page 38



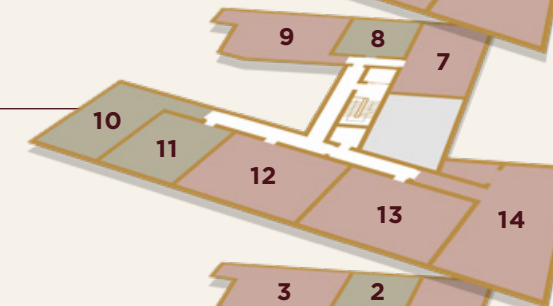
SECOND FLOOR

Apartments 15-18 Page 30
 Apartments 19-22 Page 32



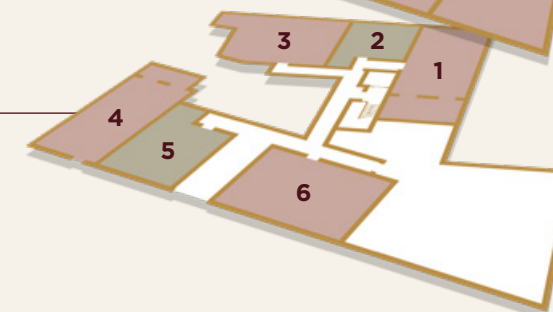
FIRST FLOOR

Apartments 7-10 Page 26
 Apartments 11-14 Page 28



GROUND FLOOR

Apartments 1-4 Page 22
 Apartments 5-6 Page 24



1
BED

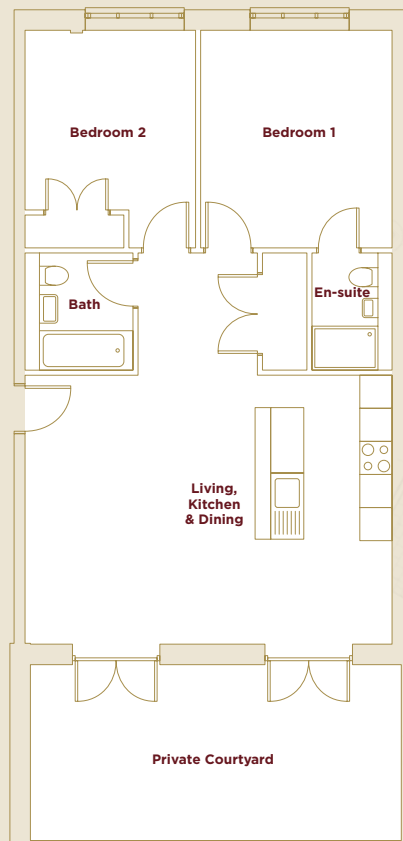
2
BED

3
BED

INDICATIVE FLOORPLANS

GROUND FLOOR

1 2 BED (799 SQ FT)



Living space
400 sq ft

Bedroom 1
149 sq ft

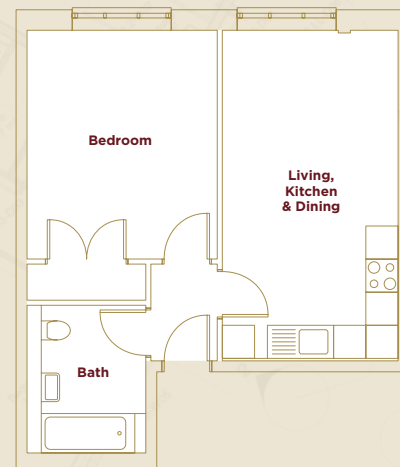
Bedroom 2
117 sq ft

Bath
45 sq ft

En-suite
33 sq ft

Courtyard
229 sq ft

2 1 BED (476 SQ FT)

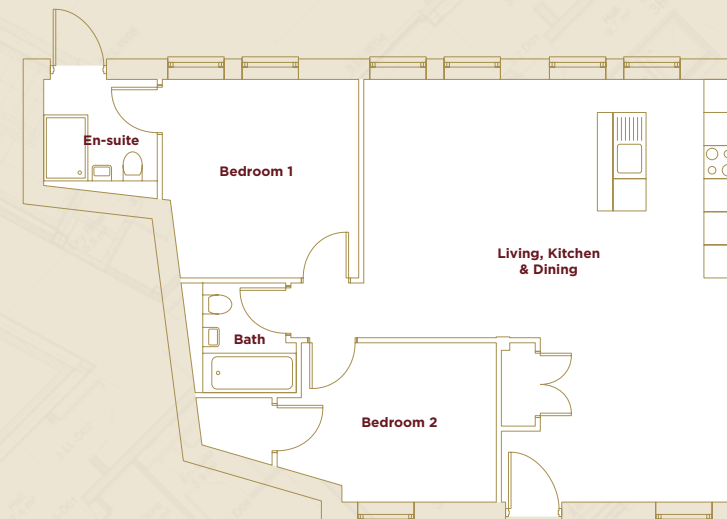


Living space
205 sq ft

Bedroom
154 sq ft

Bath
58 sq ft

3 2 BED (864 SQ FT)



Living space
480 sq ft

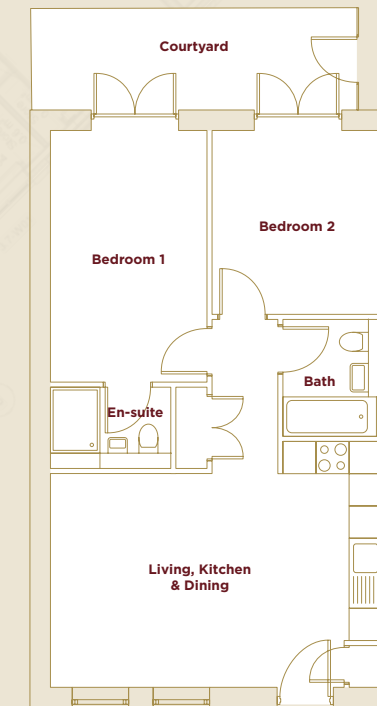
Bedroom 1
135 sq ft

Bedroom 2
113 sq ft

Bath
38 sq ft

En-suite
45 sq ft

4 2 BED (657 SQ FT)



Living space
293 sq ft

Bedroom 1
140 sq ft

Bedroom 2
111 sq ft

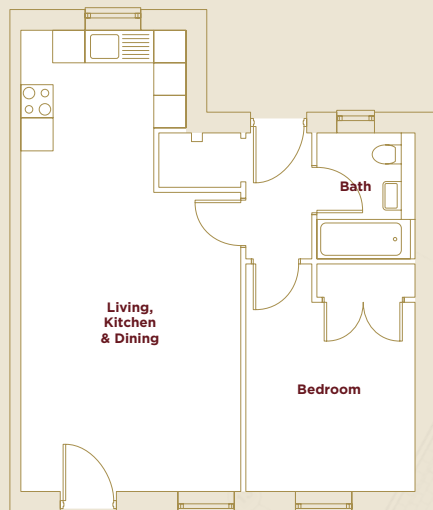
Bath
41 sq ft

En-suite
34 sq ft

Courtyard
122 sq ft

INDICATIVE FLOORPLANS GROUND FLOOR

5 1 BED (563 SQ FT)



Living space
322 sq ft

Bedroom
123 sq ft

Bath
44 sq ft

6 2 BED (766 SQ FT)



Living space
285 sq ft

Bedroom 1
131 sq ft

Bedroom 2
123 sq ft

Bath
46 sq ft

En-suite
54 sq ft



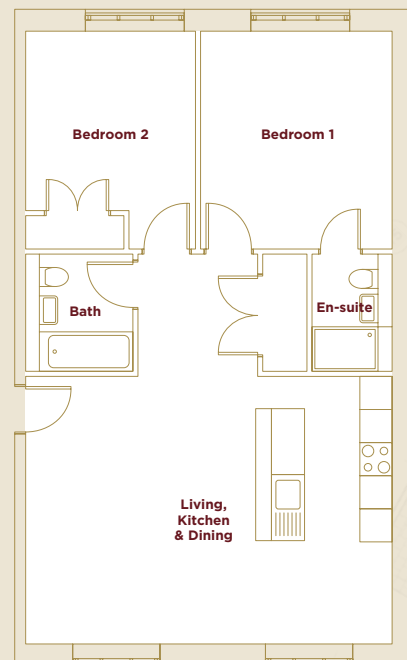
Indicative interiors



INDICATIVE FLOORPLANS

FIRST FLOOR

7 2 BED (799 SQ FT)



Living space
400 sq ft

Bedroom 1
149 sq ft

Bath
43 sq ft

Bedroom 2
117 sq ft

En-suite
31 sq ft

8 1 BED (476 SQ FT)



Living space
185 sq ft

Bedroom
139 sq ft

Bath
48 sq ft

9 2 BED (864 SQ FT)



Living space
495 sq ft

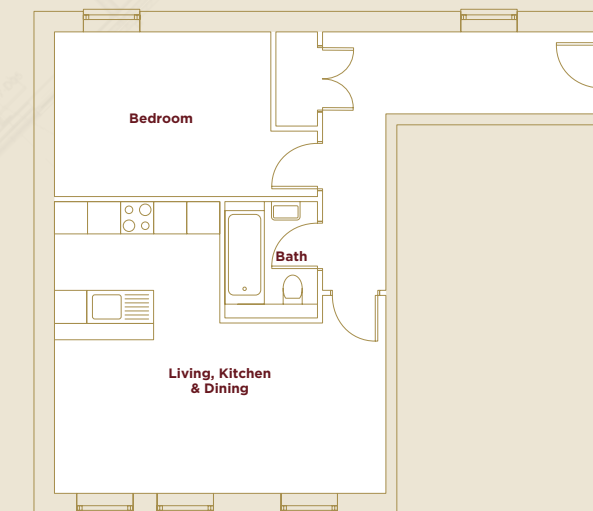
Bedroom 1
135 sq ft

Bath
38 sq ft

Bedroom 2
125 sq ft

En-suite
45 sq ft

10 2 BED (657 SQ FT)



Living space
278 sq ft

Bedroom
138 sq ft

Bath
38 sq ft

INDICATIVE FLOORPLANS

FIRST FLOOR

11 1 BED (518 SQ FT)

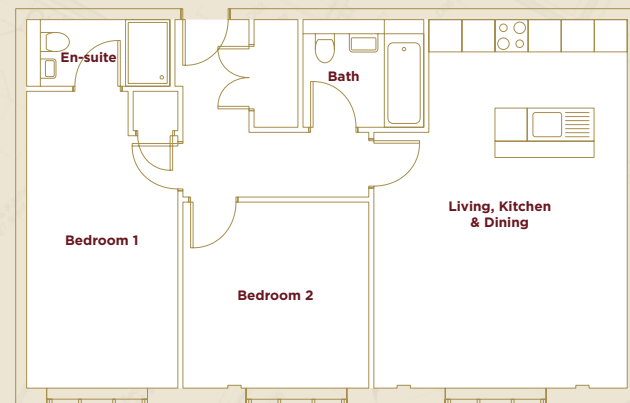


Living space
275 sq ft

Bedroom
124 sq ft

Bath
45 sq ft

12 2 BED (786 SQ FT)



Living space
309 sq ft

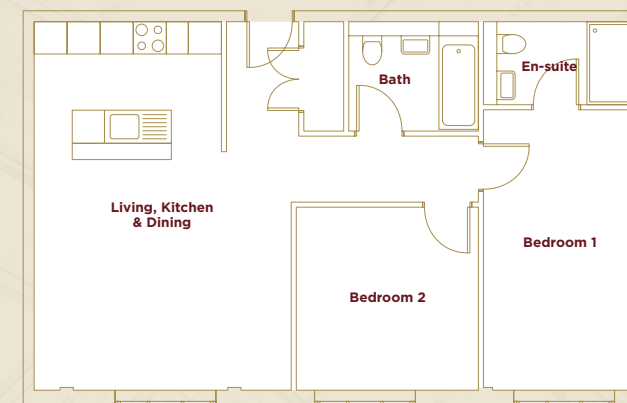
Bedroom 1
152 sq ft

Bedroom 2
123 sq ft

Bath
46 sq ft

En-suite
32 sq ft

13 2 BED (786 SQ FT)



Living space
293 sq ft

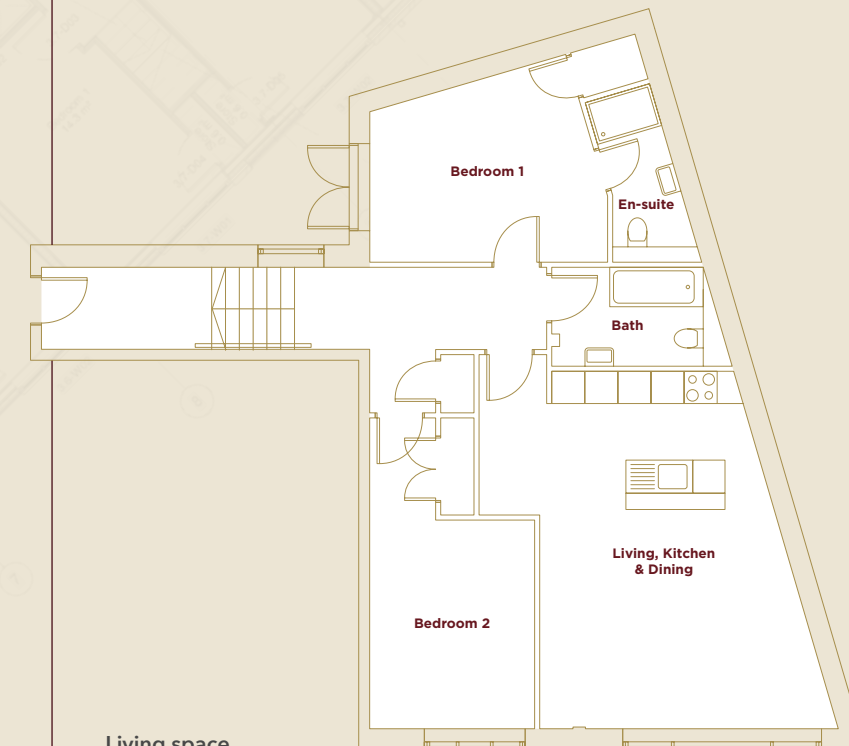
Bedroom 1
152 sq ft

Bedroom 2
118 sq ft

Bath
50 sq ft

En-suite
43 sq ft

14 2 BED (964 SQ FT)



Living space
346 sq ft

Bedroom 1
144 sq ft

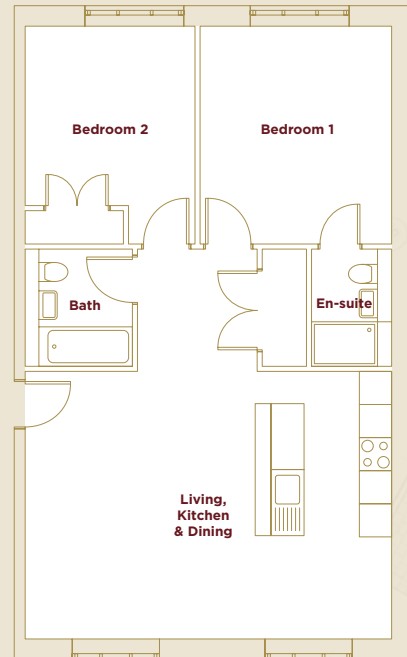
Bedroom 2
146 sq ft

Bath
58 sq ft

En-suite
43 sq ft

INDICATIVE FLOORPLANS SECOND FLOOR

15 2 BED (799 SQ FT)



Living space
400 sq ft

Bedroom 1
149 sq ft

Bedroom 2
117 sq ft

Bath
44 sq ft

En-suite
33 sq ft

16 1 BED (438 SQ FT)

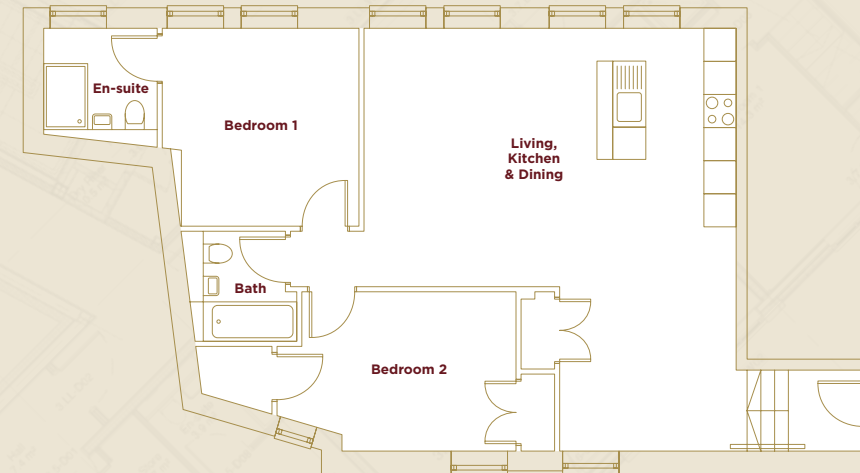


Living space
185 sq ft

Bedroom
139 sq ft

Bath
48 sq ft

17 2 BED (898 SQ FT)



Living space
495 sq ft

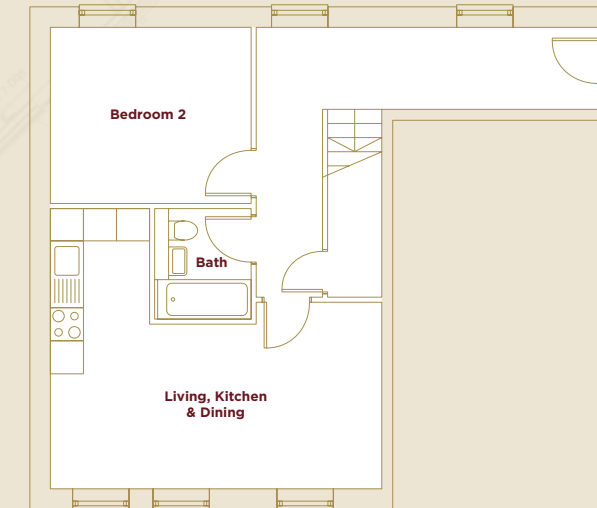
Bedroom 1
135 sq ft

Bedroom 2
125 sq ft

Bath
38 sq ft

En-suite
45 sq ft

18 2 BED DUPLEX (999 SQ FT)



Living space
244 sq ft

Bedroom 1
174 sq ft

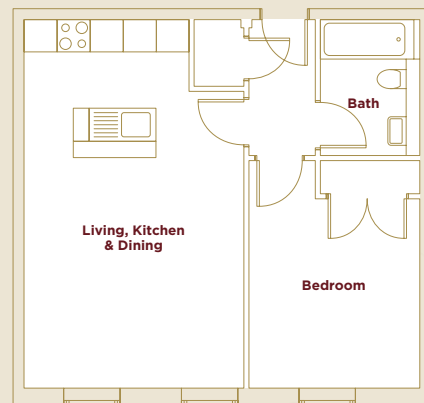
Bedroom 2
125 sq ft

Bath
37 sq ft

En-suite
50 sq ft

INDICATIVE FLOORPLANS SECOND FLOOR

19 1 BED (518 SQ FT)

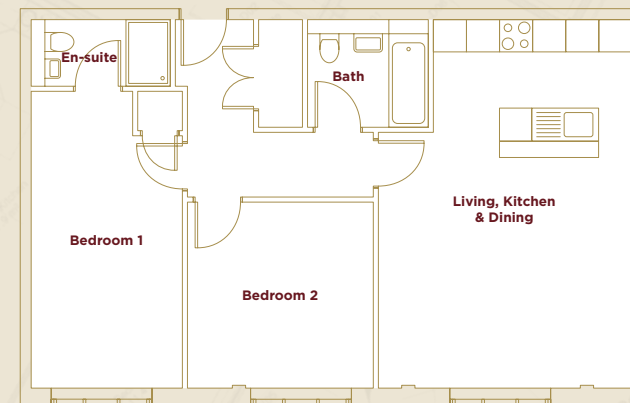


Living space
275 sq ft

Bedroom
124 sq ft

Bath
46 sq ft

20 2 BED (786 SQ FT)



Living space
309 sq ft

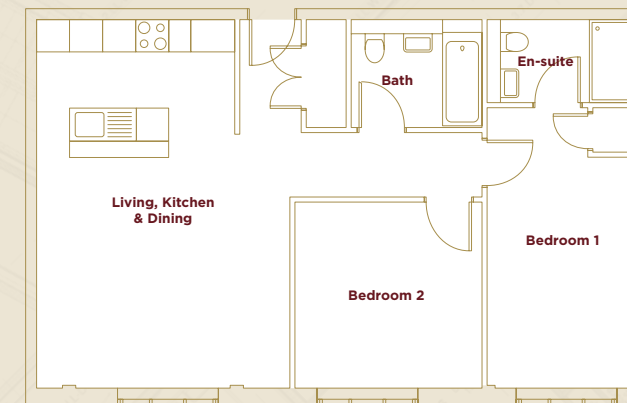
Bedroom 1
152 sq ft

Bedroom 2
123 sq ft

Bath
46 sq ft

En-suite
32 sq ft

21 1 BED (787 SQ FT)



Living space
297 sq ft

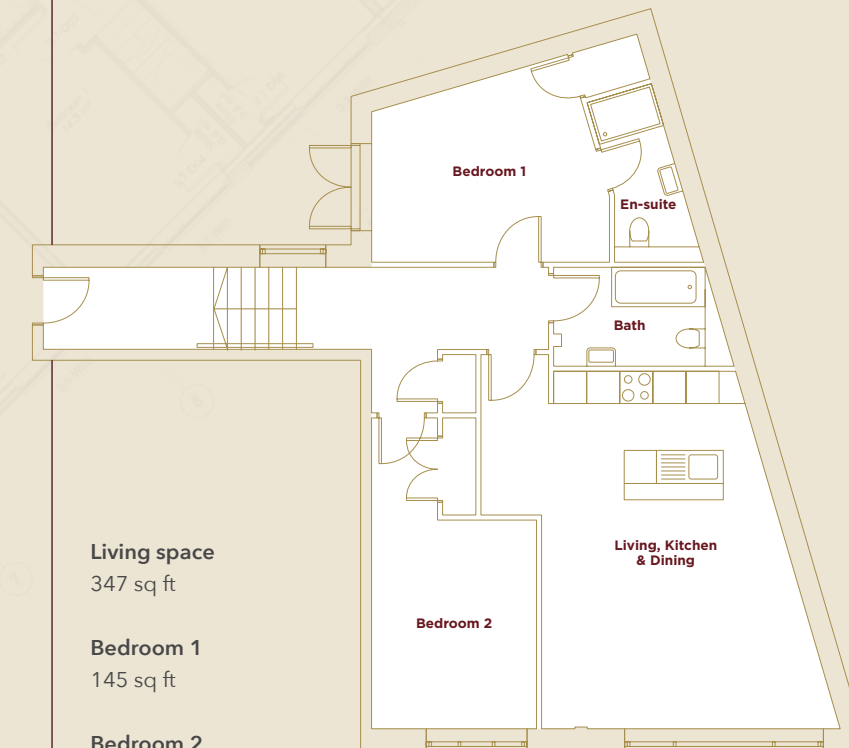
Bedroom 1
141 sq ft

Bedroom 2
124 sq ft

Bath
50 sq ft

En-suite
43 sq ft

22 2 BED (964 SQ FT)



Living space
347 sq ft

Bedroom 1
145 sq ft

Bedroom 2
146 sq ft

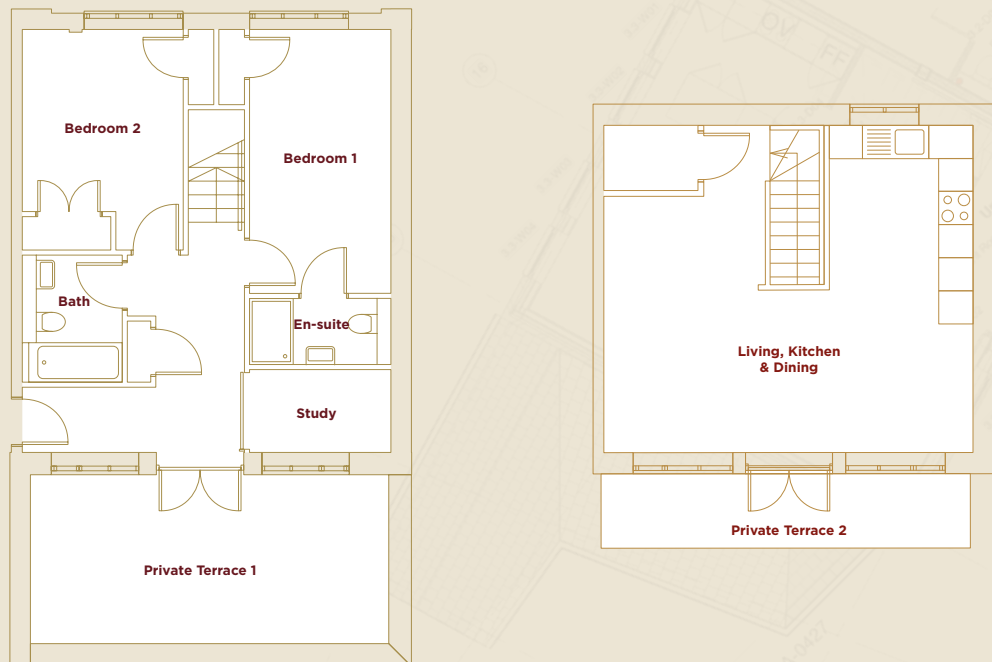
Bath
58 sq ft

En-suite
43 sq ft

INDICATIVE FLOORPLANS

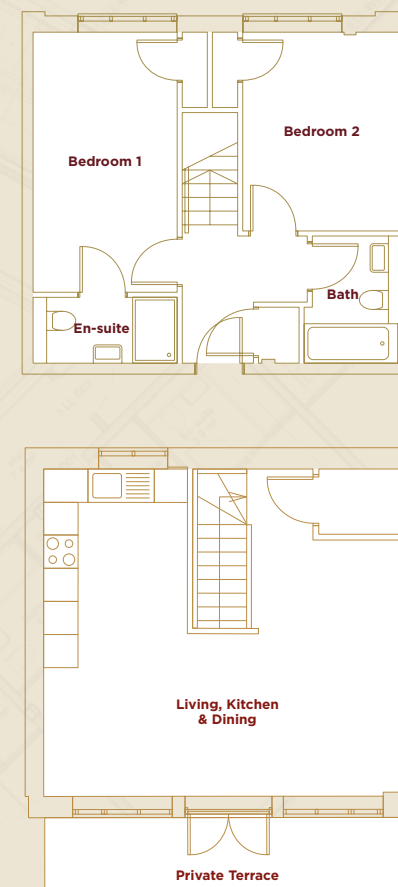
THIRD/FOURTH FLOORS

23 2 BED DUPLEX (980 SQ FT)



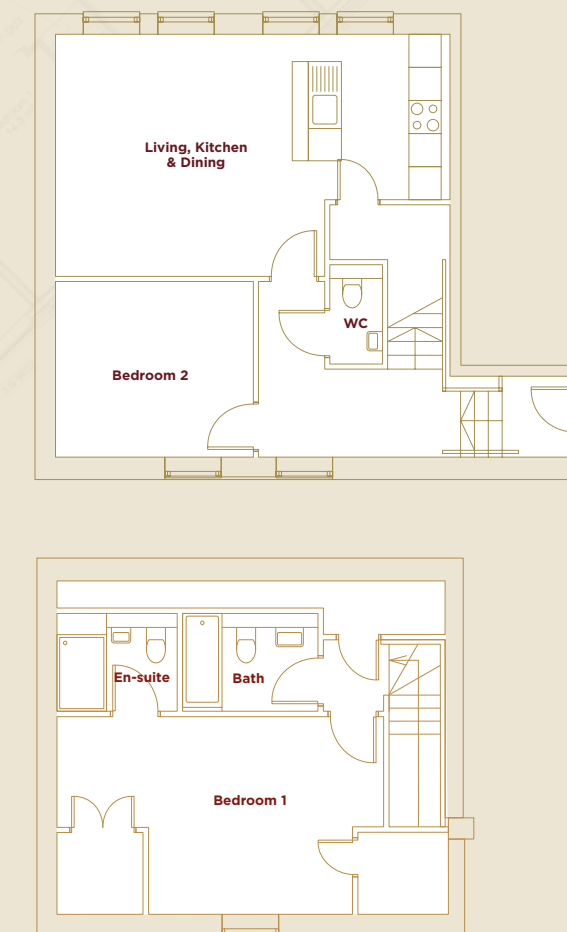
Living space 349 sq ft	Bedroom 2 113 sq ft	Bath 42 sq ft	Terrace 1 98 sq ft
Bedroom 1 132 sq ft	Study 42 sq ft	En-suite 30 sq ft	Terrace 2 98 sq ft

24 2 BED DUPLEX (864 SQ FT)



Living space 349 sq ft
Bedroom 1 134 sq ft
Bedroom 2 112 sq ft
Bath 42 sq ft
En-suite 30 sq ft
Terrace 98 sq ft

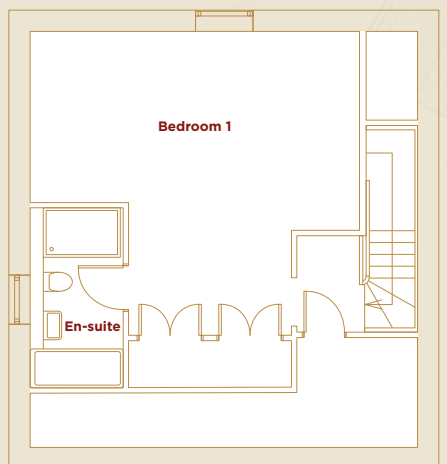
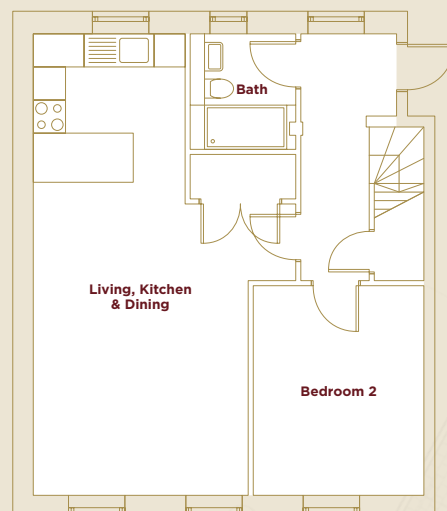
25 2 BED DUPLEX (1,044 SQ FT)



Living space 300 sq ft
Bedroom 1 192 sq ft
Bedroom 2 123 sq ft
Bath 42 sq ft
En-suite 34 sq ft
WC 16 sq ft

INDICATIVE FLOORPLANS THIRD/FOURTH FLOORS

26 2 BED DUPLEX (1,038 SQ FT)



Living space
326 sq ft

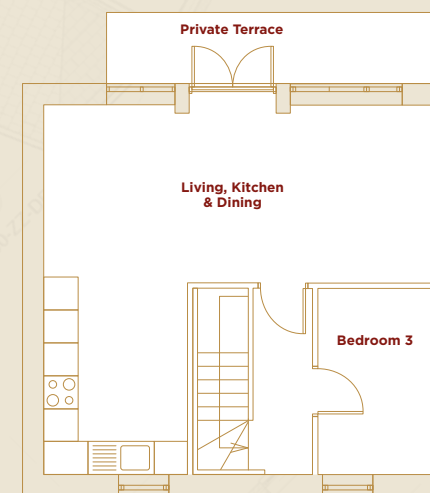
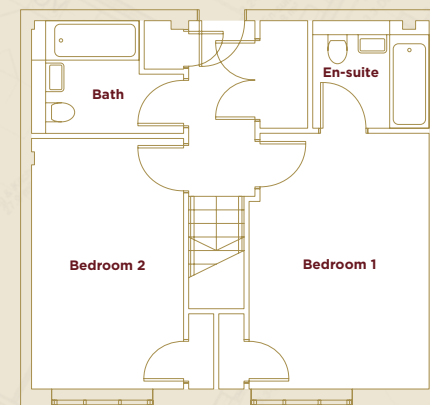
Bedroom 1
297 sq ft

Bedroom 2
127 sq ft

Bath
37 sq ft

En-suite
53 sq ft

27 3 BED DUPLEX (1,031 SQ FT)



Living space
340 sq ft

Bedroom 1
160 sq ft

Bedroom 2
135 sq ft

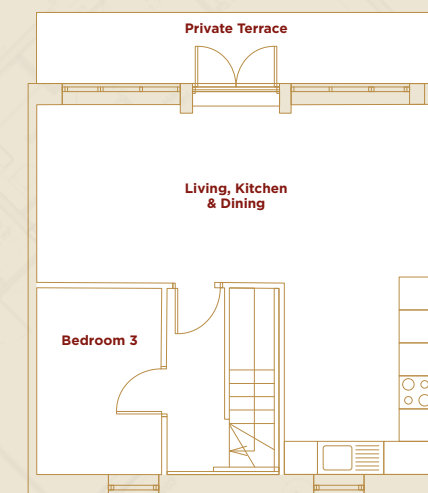
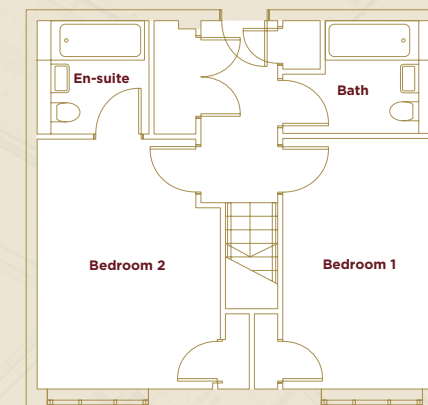
Bedroom 3
76 sq ft

Bath
51 sq ft

En-suite
42 sq ft

Terrace
82 sq ft

28 3 BED DUPLEX (1,035 SQ FT)



Living space
349 sq ft

Bedroom 1
157 sq ft

Bedroom 2
132 sq ft

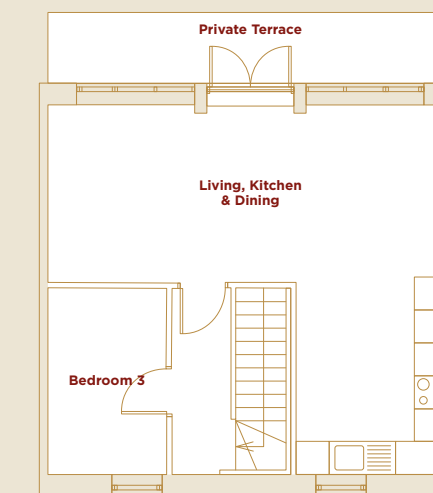
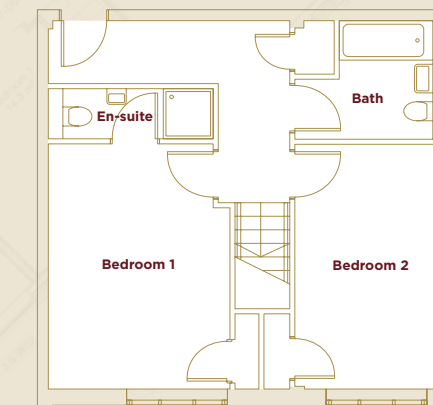
Bedroom 3
82 sq ft

Bath
50 sq ft

En-suite
43 sq ft

Terrace
100 sq ft

29 3 BED DUPLEX (1,045 SQ FT)



Living space
352 sq ft

Bedroom 1
154 sq ft

Bedroom 2
132 sq ft

Bedroom 3
76 sq ft

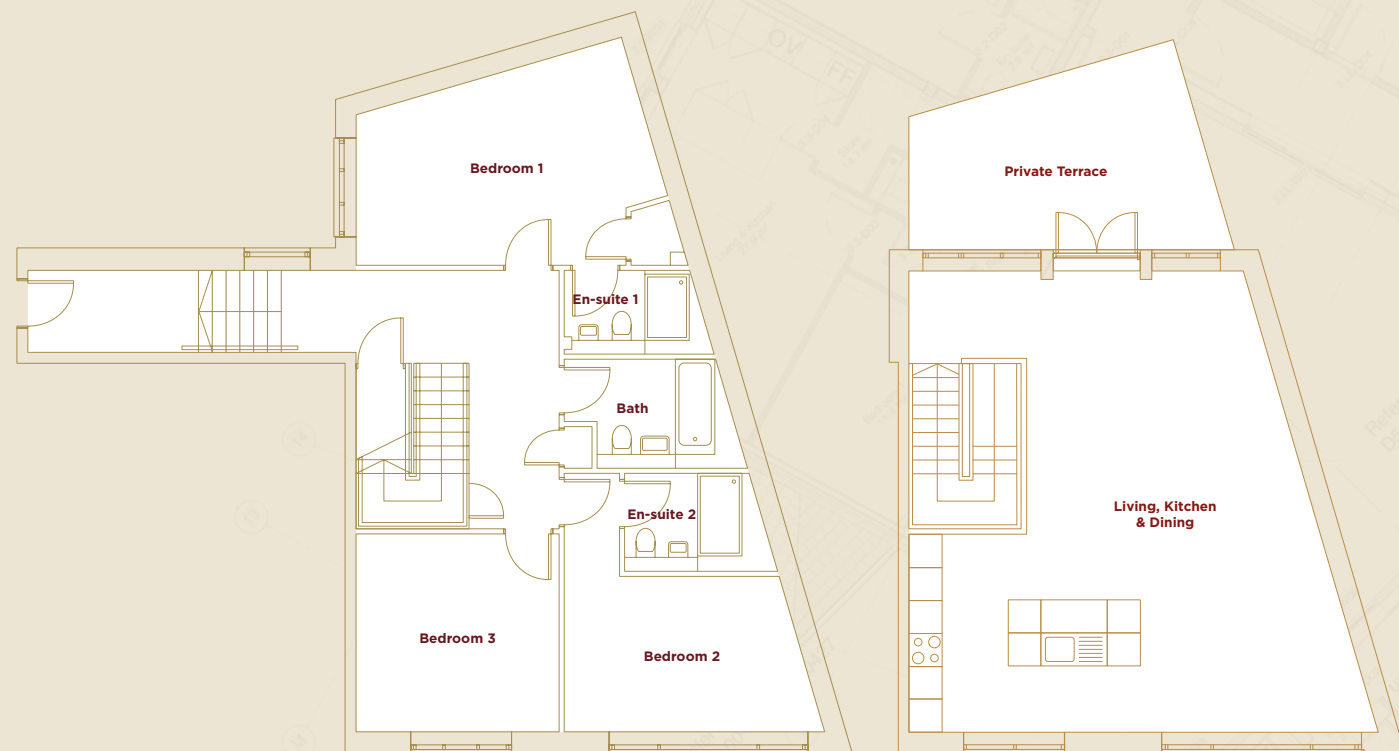
Bath
53 sq ft

En-suite
27 sq ft

Terrace
98 sq ft

INDICATIVE FLOORPLANS THIRD/FOURTH FLOORS

30 3 BED DUPLEX (1,621 SQ FT)



Living space
559 sq ft

Bedroom 2
152 sq ft

Bath
53 sq ft

En-suite 2
39 sq ft

Bedroom 1
193 sq ft

Bedroom 3
142 sq ft

En-suite 1
34 sq ft

Terrace
197 sq ft



Indicative interiors



TREASURE HOUSE

TREASUREHOUSEJQ.CO.UK

DISCLAIMER: VZ Properties and any joint agents give notice that: 1. They are not authorised to make or give any representations or warranties in relation to the property either here or elsewhere, either on their own behalf or on behalf of their client or otherwise. They assume no responsibility for any statement that may be made in these particulars. These particulars do not form part of any offer or contract and must not be relied upon as statements or representations of fact. 2. Any areas, measurements or distances are approximate. The text, images and plans are for guidance only and are not necessarily comprehensive. It should not be assumed that the property has all necessary planning, building regulation or other consents and VZ Properties have not tested any services, equipment or facilities. Purchasers must satisfy themselves by inspection or otherwise. 3. These particulars were prepared from preliminary plans and specifications before the completion of the properties. These particulars, together with any images that they contain, are intended only as a guide. They may have been changed during construction and final finishes could vary. Prospective purchasers should not rely on this information but must get their solicitor to check the plans and specification attached to their contract.