

Davidson



- Canal Views
- Spacious Living area
- Two Bedrooms Two bathrooms
- Secure Parking Space

King Edwards Wharf, Sheepcote Street, Birmingham, B16 8FX Offers In Region Of £375,000

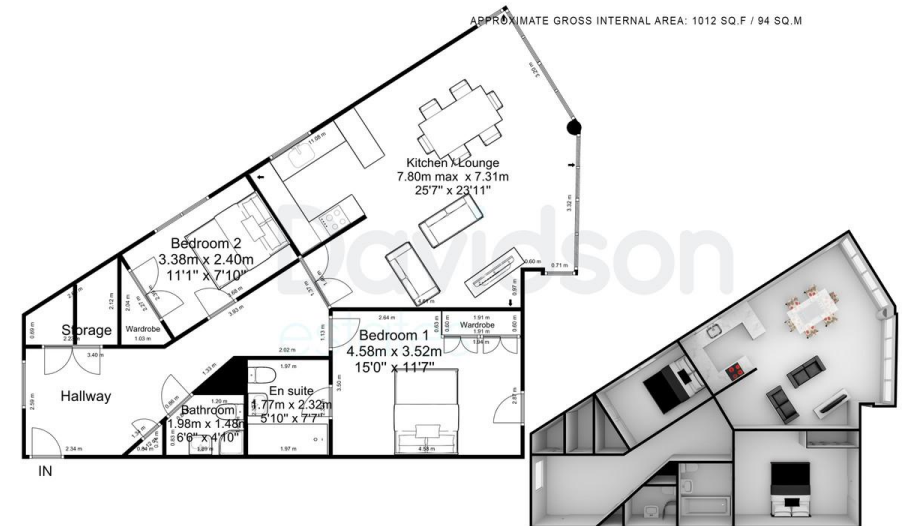
CONTEMPORARY APARTMENT | 5th Floor | Two bedrooms | Two Bathrooms | Communal Courtyard | 24 hour Concierge | Canalside Development | Parking Space



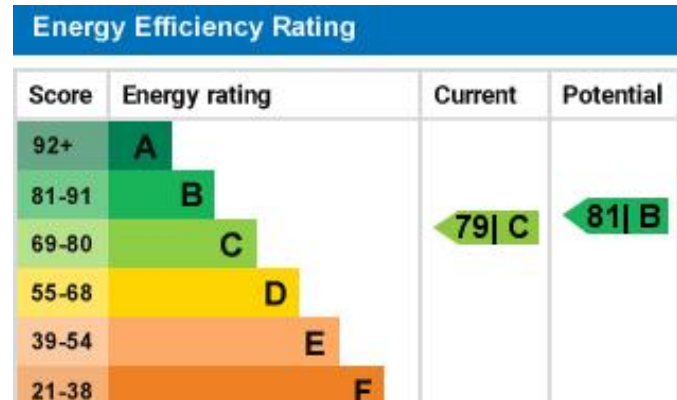
2x 2x

654, King Edwards Wharf, 25, Sheepcote Street, Birmingham, B16 8FX

APPROXIMATE GROSS INTERNAL AREA: 1012 SQ.F / 94 SQ.M



Floorplan measurements are for illustrative purpose only. Floor plan by www.sebastiano.co.uk.



Unit 2 Liberty Place, 26-38
Sheepcote Street, Birmingham,
West Midlands, B16 8AE

www.davidsonstates.co.uk
0121 455 7727
info@davidsonstates.co.uk

Agents Note: Whilst every care has been taken to prepare these particulars, they are for guidance purposes only. All measurements are approximate and for general guidance purposes only and whilst every care has been taken to ensure their accuracy, they should not be relied upon and potential buyers/tenants are advised to recheck the measurements