



Charles Street

W1

A development exclusively managed by  
Beauchamp Estates





## A collection of five luxury apartments in the heart of Mayfair

---

This brand new development  
offers sophisticated and  
contemporary lateral living  
within a Georgian style Grade  
II listed building.





Each apartment has been interior  
designed to an exceptional standard.



# Charles Street

This boutique development comprises five apartments each offering impressive ceiling heights, intricate original features and voluminous rooms.

Every apartment benefits from direct lift access, air conditioning and an integrated sound system.





# Apartment Overviews

## Apartment 1

- Ground & Lower Ground
- 2,102 sq ft (195.3 sq m)
- 2 Bedrooms
- 2 Bathrooms
- Formal Drawing Room
- Eat-in Kitchen
- Guest Cloakroom

## Apartment 3

- First Floor
- 2,557 sq ft (237.5 sq m)
- 3 Bedrooms
- 3 Bathrooms
- Formal Drawing Room
- Guest Cloakroom
- Balcony

## Apartment 5

- Fourth & Fifth Floor
- 2,267 sq ft (210.7 sq m)
- 3 Bedrooms
- 3 Bathrooms
- Open Plan Living & Kitchen Area
- Private Roof Terrace
- Guest Cloakroom

## Apartment 2

- Ground & Lower Ground
- 2,278 sq ft (211.6 sq m)
- 2 Bedrooms
- 2 Bathrooms
- Formal Drawing Room
- Lower Level Sitting Area
- Wet Bar

## Apartment 4

- Triplex (2nd, Mezzanine, & 3rd Floor)
- 3,498 sq ft (325 sq m)
- 3 Bedrooms
- 3 Bathrooms
- Formal Drawing Room
- Eat-in Kitchen
- Family Room
- Guest Cloakroom

All apartments benefit from Direct Lift Access, Creston Home Automation and are available to be rented on a fully furnished basis.





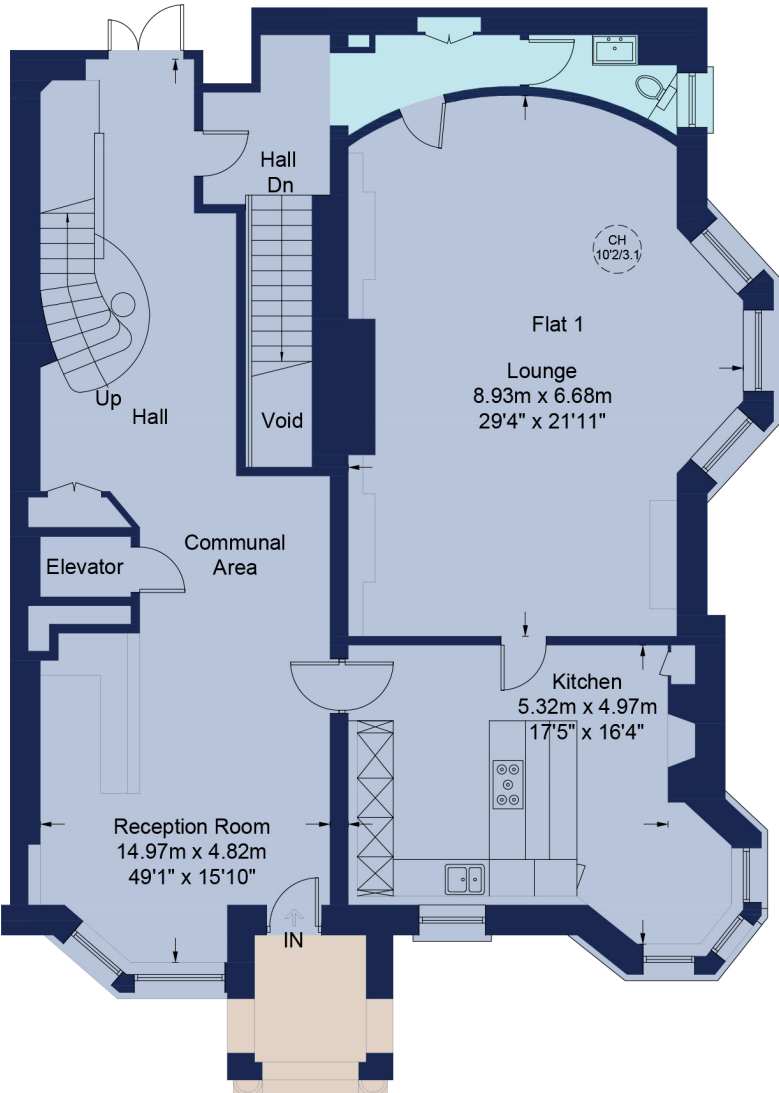
# Floorplans

## Apartment 1

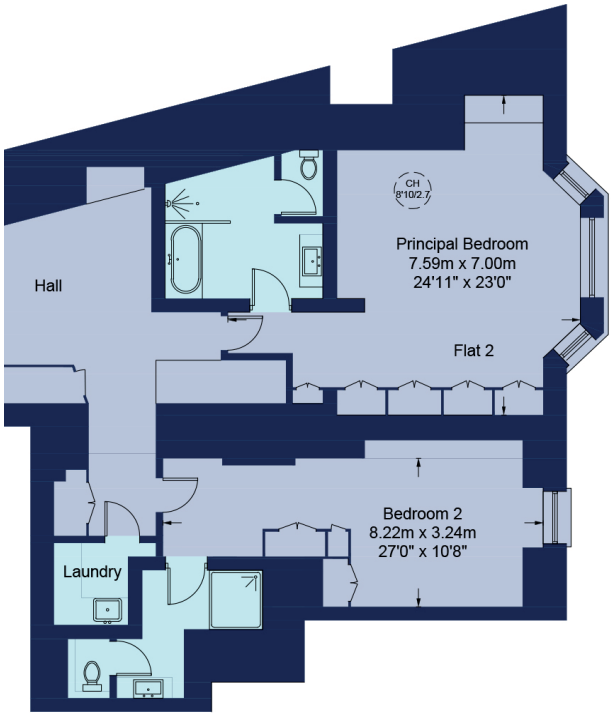
Approximate Gross Internal Area  
2,102 sq ft (195.3 sq m)



Lower Ground Floor



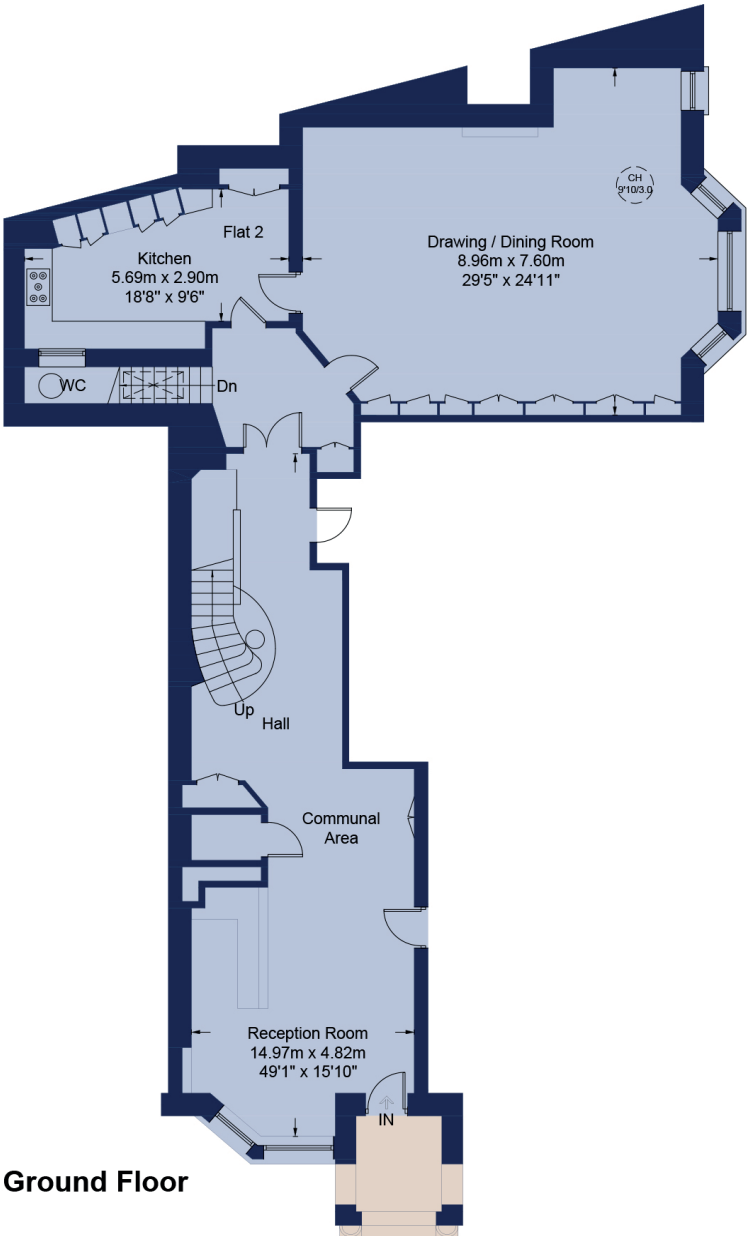
Ground Floor



Lower Ground Floor

## Apartment 2

Approximate Gross Internal Area  
2,278 sq ft (211.6 sq m)



Ground Floor

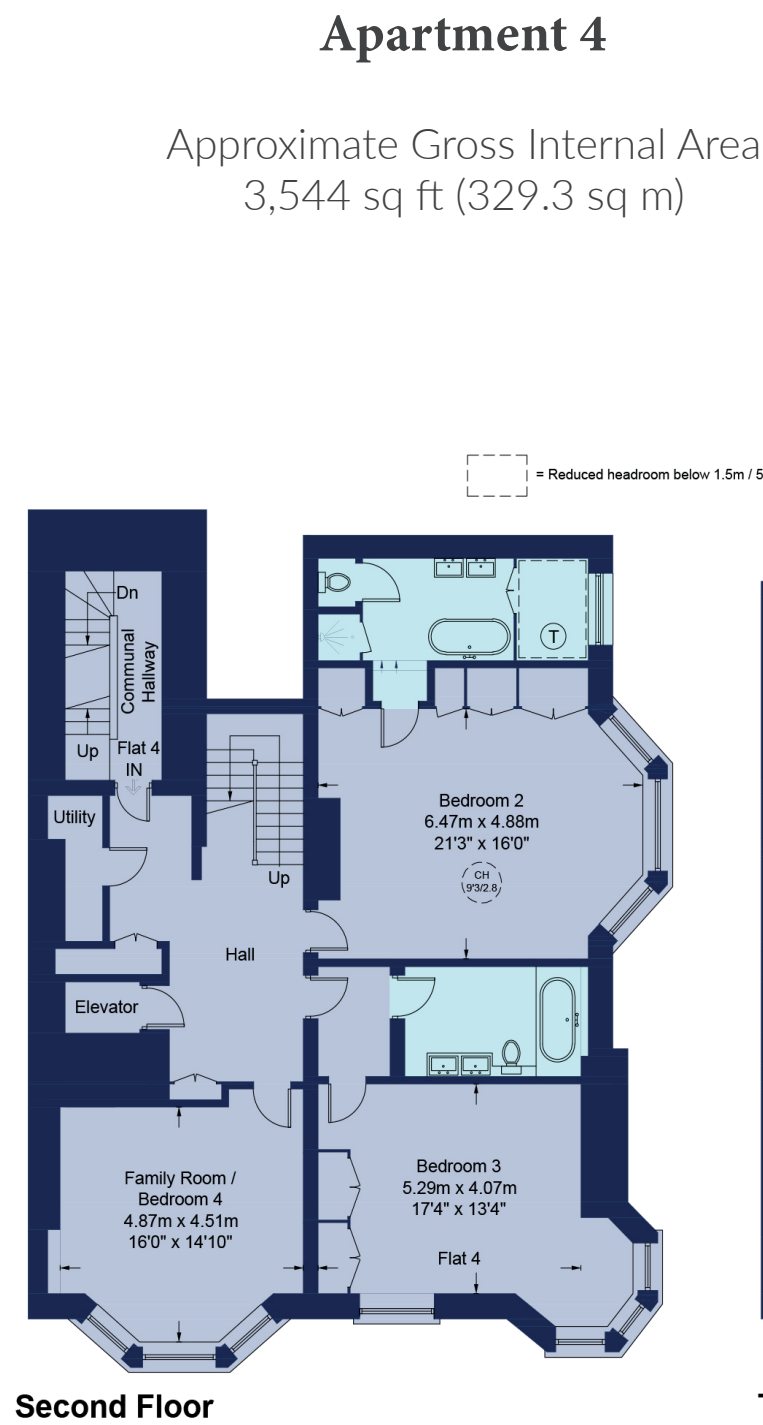


# Floorplans



**Apartment 3**

Approximate Gross Internal Area  
2,575 sq ft (239.2 sq m)



**Apartment 4**

Approximate Gross Internal Area  
3,544 sq ft (329.3 sq m)

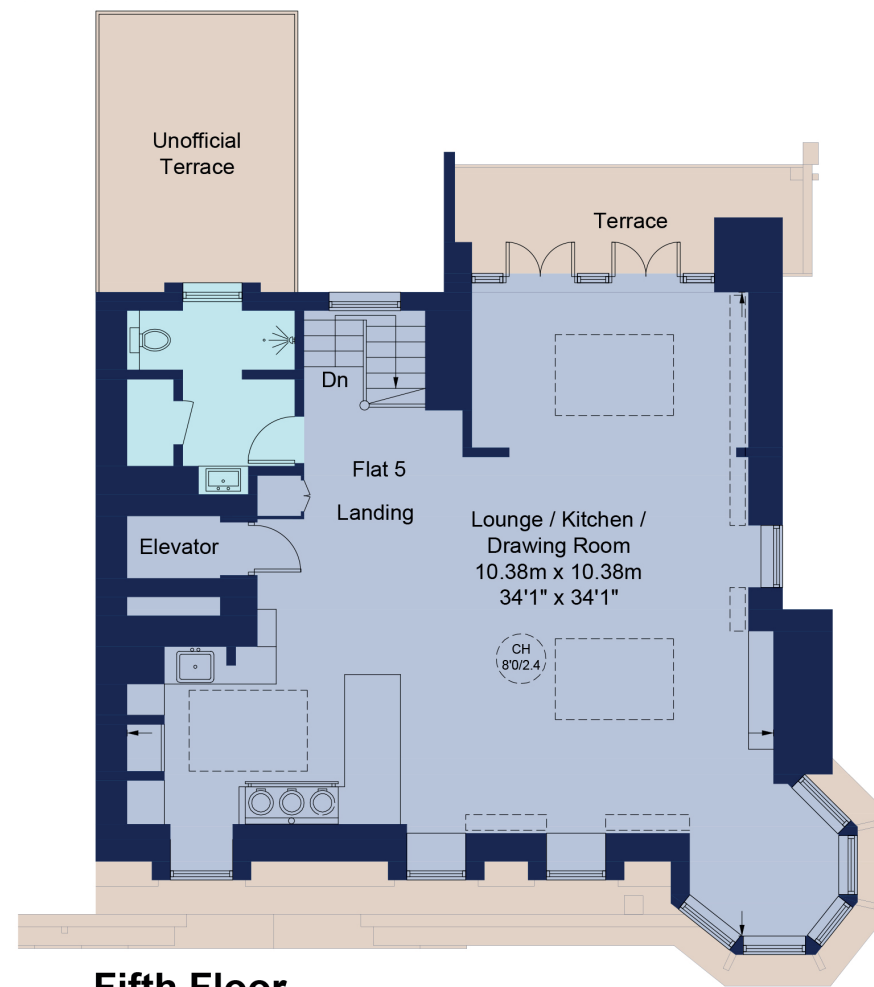
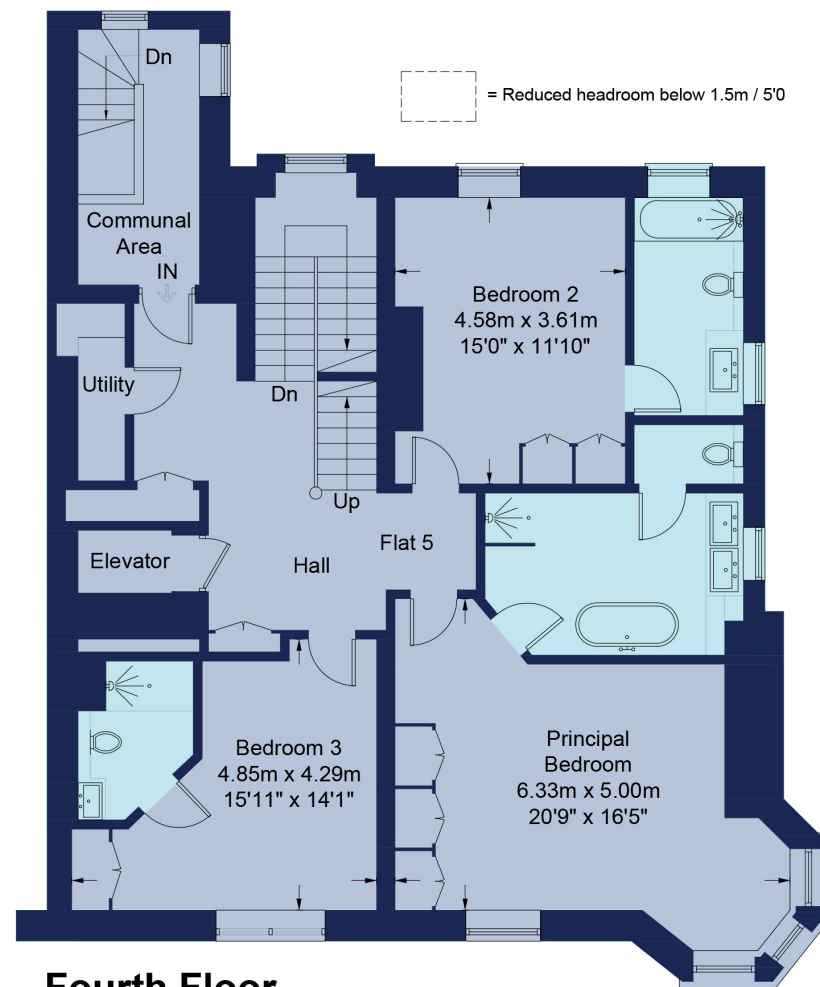




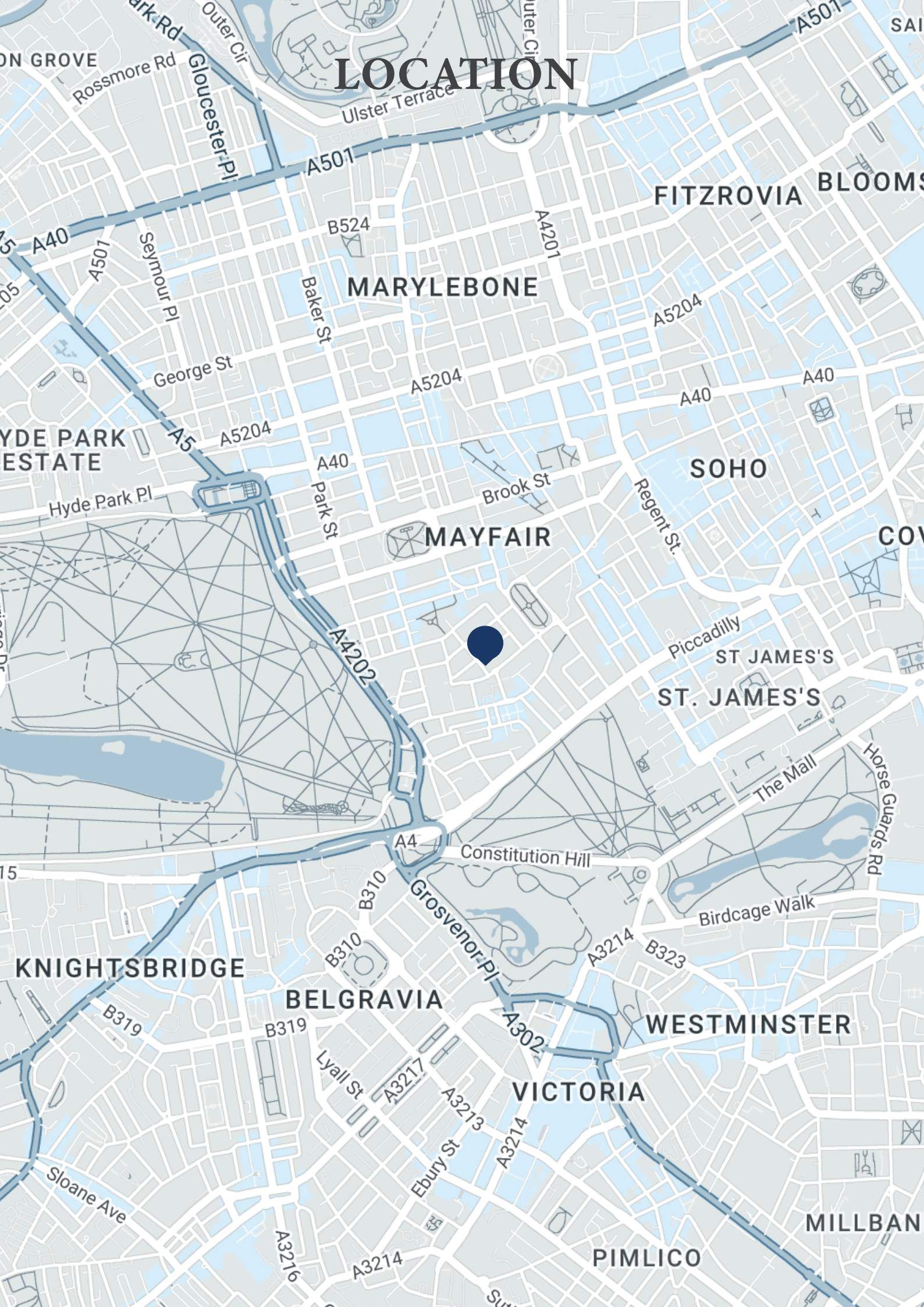
# Floorplans

## Apartment 5

Approximate Gross Internal Area  
2,290sq ft (212.8 sq m)







# LOCATION



## TERMS

Viewing by appointment only with  
Beauchamp Estates

+44 (0)20 7722 9793  
francesca@beauchamp.com  
80 St John's Wood High Street, NW8 7SH

Beauchamp Estates, their clients and any joint agents give notice that: 1. They are not authorised to make or give any representation or warranties in relation to the property either here or elsewhere, either on their own behalf or on behalf of their client or otherwise. They assume no responsibility for any statement that may be made in these particulars. These particulars do not form part of any offer or contract and must not be relied upon as statements or representations of fact. 2. Any Areas, measurements or distances are approximate. The text photographs and plans are for guidance only and are not necessarily comprehensive. It should not be assumed that the property has all necessary planning, building regulation or other consents and Beauchamp Estates have not tested any services, equipment or facilities. Purchasers must satisfy themselves by inspection or otherwise.