



EATON PLACE

BELGRAVIA SW1X

An elegant family home boasting original period features, set in the heart of Belgravia.

Eaton Place offers a large and beautifully presented family home situated in one of Belgravia's most sought-after addresses. Arranged over six spacious floors with magnificent rooms of great proportions, high ceilings, and period features throughout. This wonderful home comprises a principal bedroom suite, a further five guest bedrooms, and staff quarters. Further benefits include an elegant reception room with a dining area, southwest-facing terrace, and tranquil patio.

LOCATION

Eaton Place benefits from a truly world-class location and is one of the most desirable addresses in London. Surrounded by Michelin-starred restaurants, luxury hotels, and prestigious clothing boutiques, as well as Royal Parks and numerous cultural sites. There are excellent direct transport links to London's many commercial and private airports, as well as important areas of business and commerce including The City of London. Victoria Underground Station (Victoria and Circle & District Lines) is within an approximate 10-minute stroll away.





ACCOMMODATION

- Entrance Hall
- Reception room with dining area
- Kitchen
- Sitting room with kitchenette
- Three guest cloakrooms
- Principal en suite bedroom
- Further five guest bedrooms
- Three staff/guest bedrooms
- Terrace
- Patio
- Balcony

KEY FEATURES

- Original period features
- High ceilings
- Private terrace and patio
- Private balcony
- Staff quarters
- Fully furnished
- Comfort cooling

Approximate Gross Internal Area

6,250 sq ft

580.64 sq m

This plan is for layout guidance only and is not drawn to scale unless stated. All dimensions, including windows, doors, and the Total Gross Internal Area (GIA), are approximate. For precise measurements, please consult a qualified architect or surveyor before making any decisions based on this plan.

This plan has been supplied to The Brochure by Beauchamp Estates

Terms

Price: £15,000 per week

Deposit: £75,000

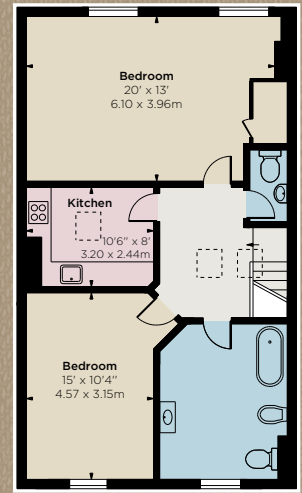
Available from: 03/07/2025

Minimum term: 12 months

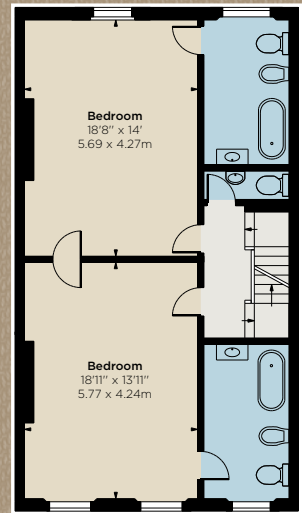
Local authority: Westminster

Council tax: Band H

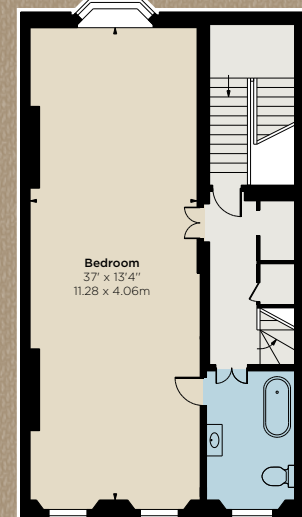
EPC: Rating E



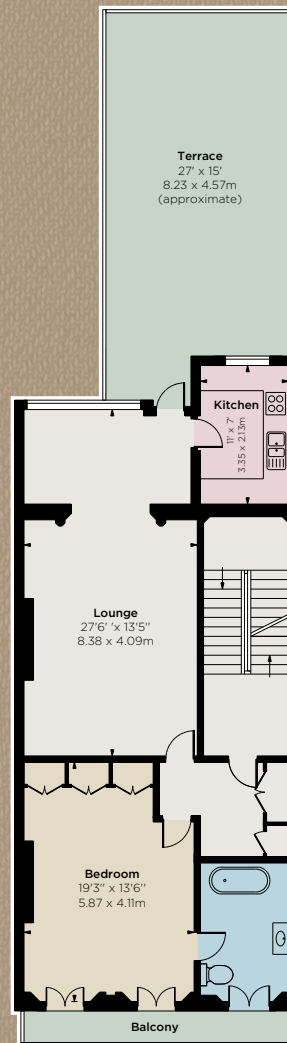
Fourth Floor



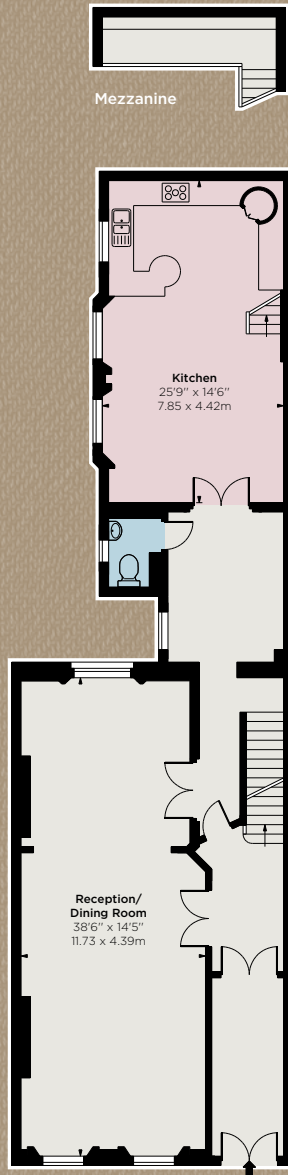
Third Floor



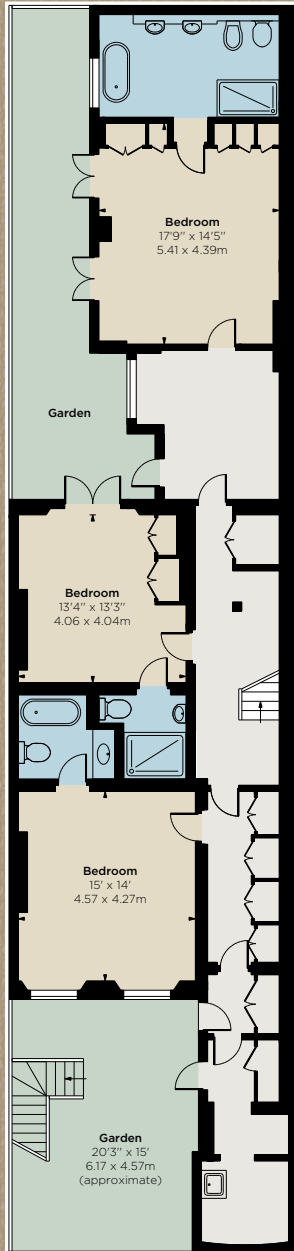
Second Floor



First Floor



Ground Floor



Lower Ground Floor

**BEAUCHAMP
ESTATES**

+44 (0)20 7499 7722

Beauchamp Estates Head Office
24 Curzon Street
Mayfair, London W1J 7TF
londonlettings@beauchampstates.com
beauchamp.com

Beauchamp Estates, their clients and any joint agents give notice that: 1. They are not authorised to make or give any representation or warranties in relation to the property either here or elsewhere, either on their own behalf or on behalf of their client or otherwise. They assume no responsibility for any statement that may be made in these particulars. These particulars do not form part of any offer or contract and must not be relied upon as statements or representations of fact. 2. Any Areas, measurements or distances are approximate. The text photographs and plans are for guidance only and are not necessarily comprehensive. It should not be assumed that the property has all necessary planning, building regulation or other consents and Beauchamp Estates have not tested any services, equipment or facilities. Purchasers must satisfy themselves by inspection or otherwise. 08/07/25 BEAU-250703-02-JF