

DUKE STREET, W1

MAYFAIR, LONDON



KEY FEATURES

- Air Conditioning & Under floor heating
- Concierge and night time security
- Lift Access
- On-Site Building Manager

The apartment has been decorated and finished to the highest of standards with modern finishes whilst retaining its original Grade II listed features such as wooden floors, fireplaces & cornicing from the original building.

The building comprises on-site concierge, comfort cooling, lift service and an emergency out of hour's service.

The apartment further benefits from an open plan reception room & kitchen offering elegant living and entertaining space, guest cloakroom and utility room with Miele appliances. The spacious master bedroom benefits from a dressing room and an en-suite bathroom.



1 BEDROOMS



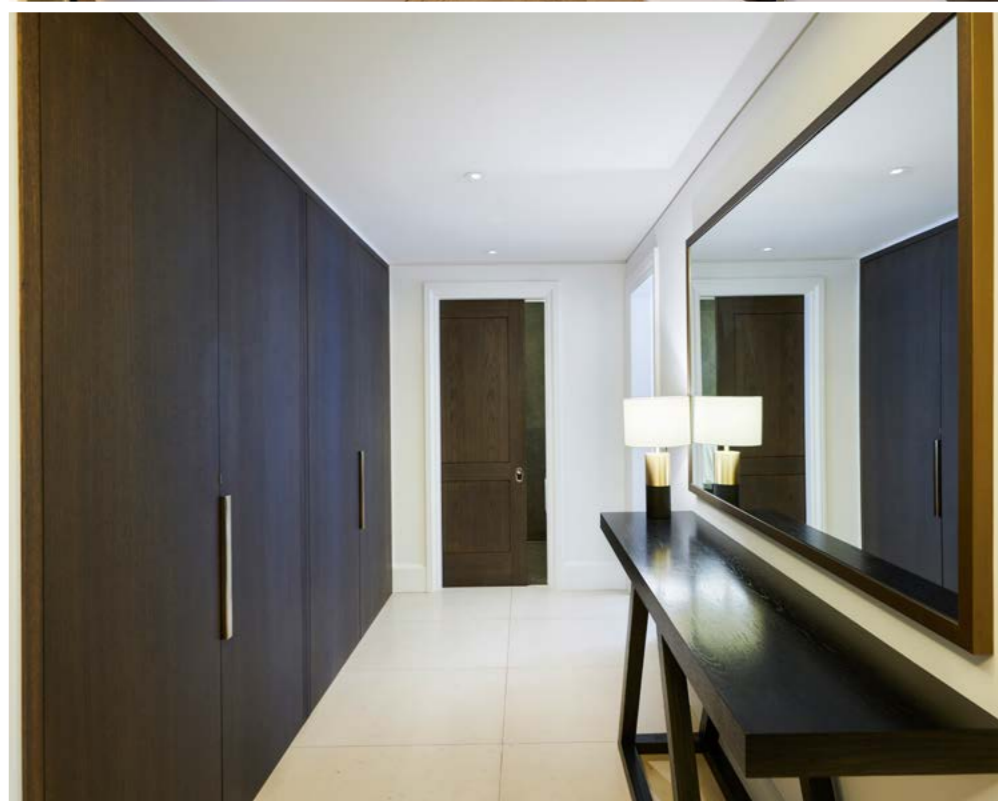
1 BATHROOMS





ACCOMMODATION

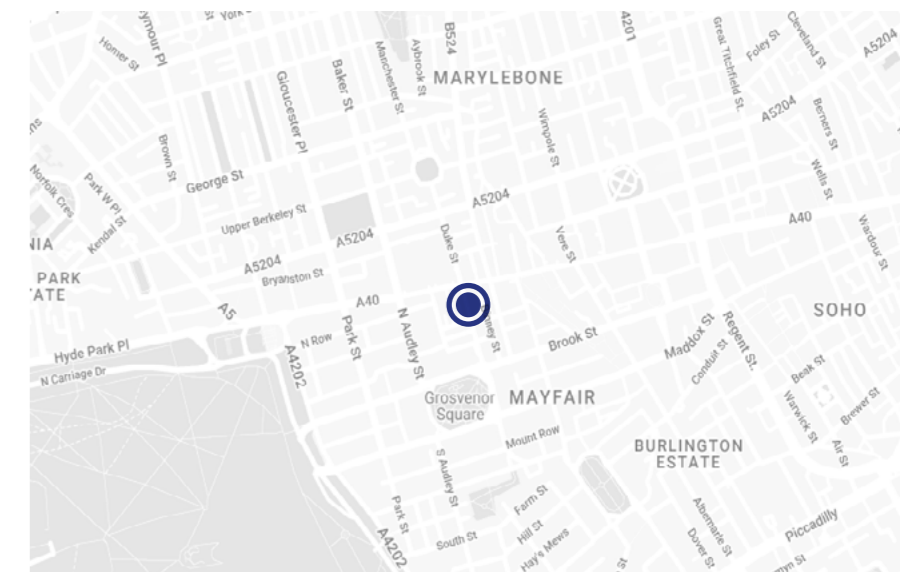
- Living room/kitchen
- Master bedroom with ensuite
- Utility and storage
- Bathroom





LOCATION

Duke Street is a well-known street located in the prestigious area of Mayfair. It's bordered by Hyde Park to the west, Oxford Street to the north, Piccadilly to the south, and Regent Street to the east. Having upscale shops and restaurants and excellent public transport facilities extremely close by, Mayfair allows easy access to the rest of London. Nearby underground stations include Bond Street (Central and Jubilee lines), Marble Arch (Central Line) are all within a 10 minute walk.





FLOORPLAN

Approx Gross Internal Area:
101.9 sq m / 1097 sq ft

Not to Scale



THIRD FLOOR

TERMS

Price: £2,400/week

Tenure: Leasehold

EPC: C

Council Tax Band: G

Viewing: By appointment only

**BEAUCHAMP
ESTATES**

MAYFAIR LETTINGS

londonlettings@beauchamp.com

+44 (0) 20 7499 7722

These particulars have been produced as a general guide for this property only and no other purpose. They are not an offer or contract. You should not rely on statements in these particulars or by word of mouth or in writing as being factually accurate about the property, its condition or its value. Neither any primary agent or joint agent has any authority to make or give any representations or warranties in relation to the property, and accordingly any information given is entirely without responsibility on the part of the agents or lessor(s). The photographs show only certain parts of the property as they appeared at the time they were taken. Any areas, measurements and distances given are approximate only. Any reference to alterations to, or use of, any part of the property does not mean that any necessary planning, building regulations or other consent has been obtained nor have any services, equipment or facilities been tested. A lessee should satisfy themselves by inspection or otherwise. The VAT position relating to the property may change without notice. Please contact us for further information regarding the approved Client Money Protection (CMP) scheme and the property redress scheme which we are a member of.



BEAUCHAMP
ESTATES