



LANCASTER GATE, W2

BAYSWATER, LONDON



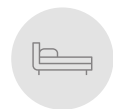


KEY FEATURES

- High ceilings
- Direct views over Hyde Park
- Separate rear entrance
- Porter
- Storage

A stylishly presented four bedroom apartment, set within a grand white stucco fronted building, with direct views overlooking Hyde Park.

Located in the prestigious Lancaster Gate area, this apartment offers an expansive and voluminous living space of 3,327 sq. ft. The property includes four bedrooms and three bathrooms, designed for those seeking a high standard of living.



4 BEDROOMS



3 BATHROOMS





ACCOMMODATION

- Reception Room
- Dining room
- Kitchen
- Utility room
- Principal suite with walk in wardrobe
- Three further bedrooms with ensuites
- Atrium

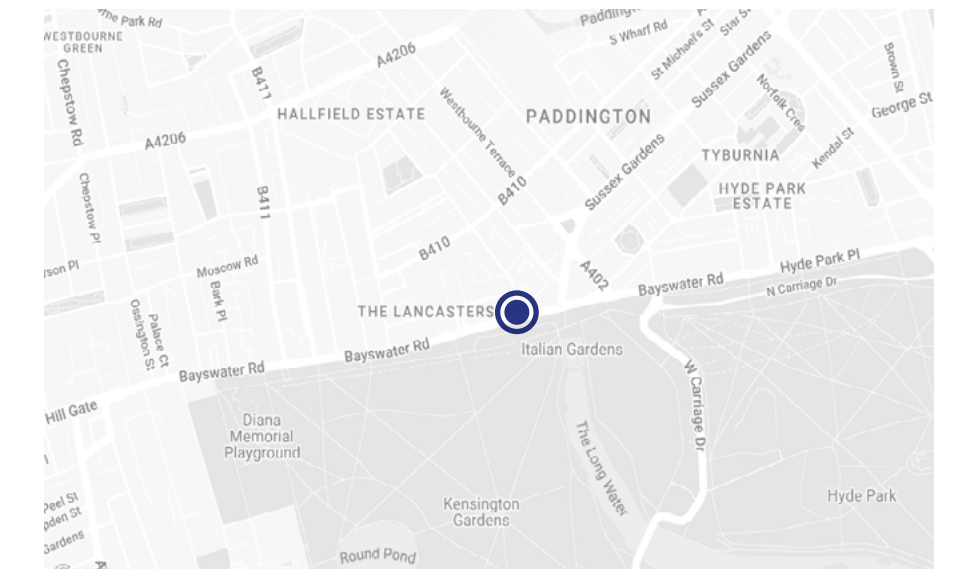




LOCATION

Lancaster Gate is renowned for its proximity to some of London's most iconic landmarks. Hyde Park is just a short walk away, providing ample opportunities for leisure and recreation. Nearby, you'll find excellent dining and shopping options.

The area is well-served by public transport, with Lancaster Gate Underground Station offering convenient access to the rest of London. Prestigious schools like Wetherby School and Pembridge Hall School are also close by, making it an ideal location for families.

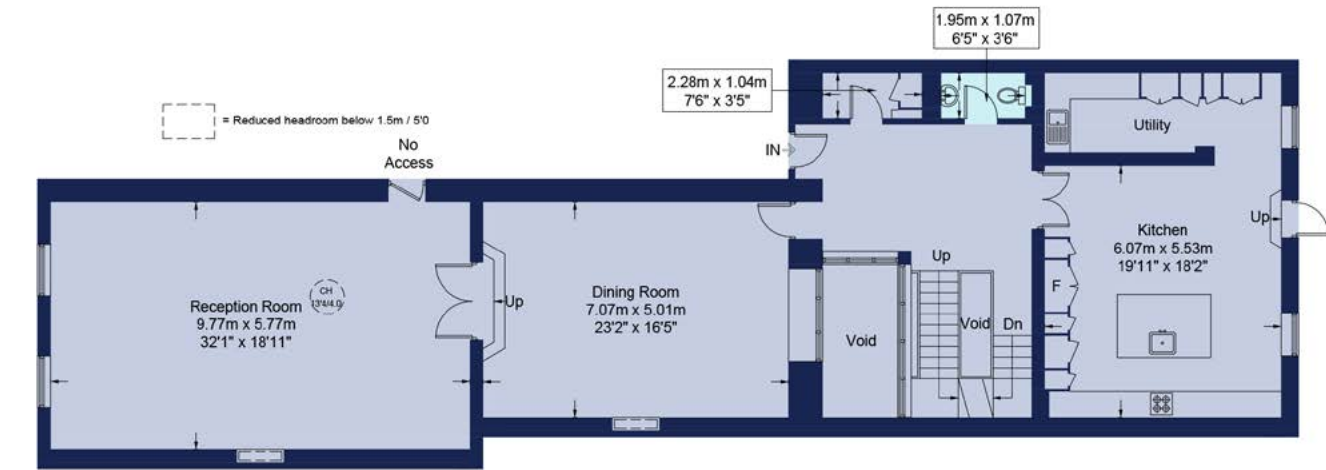




FLOORPLAN

Approx Gross Internal Area:
309.1 sq m / 3327 sq ft

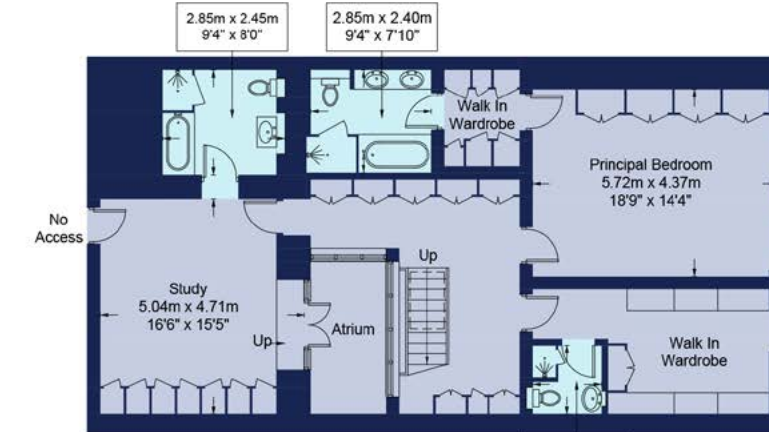
Not to Scale



Ground Floor



First Floor



Lower Ground Floor

1.75m x 1.61m (5'9" x 5'3")

TERMS

Price: £6,500,000

Tenure: Share of freehold

Council Tax Band: H

Viewing: By appointment only



MAYFAIR SALES

londonsales@beauchamp.com

+44 (0) 20 7499 7722

These particulars have been produced as a general guide for this property only and no other purpose. They are not an offer or contract. You should not rely on statements in these particulars or by word of mouth or in writing as being factually accurate about the property, its condition or its value. Neither any primary agent or joint agent has any authority to make or give any representations or warranties in relation to the property, and accordingly any information given is entirely without responsibility on the part of the agents or lessor(s). The photographs show only certain parts of the property as they appeared at the time they were taken. Any areas, measurements and distances given are approximate only. Any reference to alterations to, or use of, any part of the property does not mean that any necessary planning, building regulations or other consent has been obtained nor have any services, equipment or facilities been tested. A lessee should satisfy themselves by inspection or otherwise. The VAT position relating to the property may change without notice. Please contact us for further information regarding the approved Client Money Protection (CMP) scheme and the property redress scheme which we are a member of.



BEAUCHAMP
ESTATES