

Charles Street

MAYFAIR W1





Charles Street



An elegant and well-presented first floor apartment of approximately 1,340 sq ft within a period Portland stone building dating from 1900, with 12ft ceilings throughout and benefiting from a lift and share of freehold.

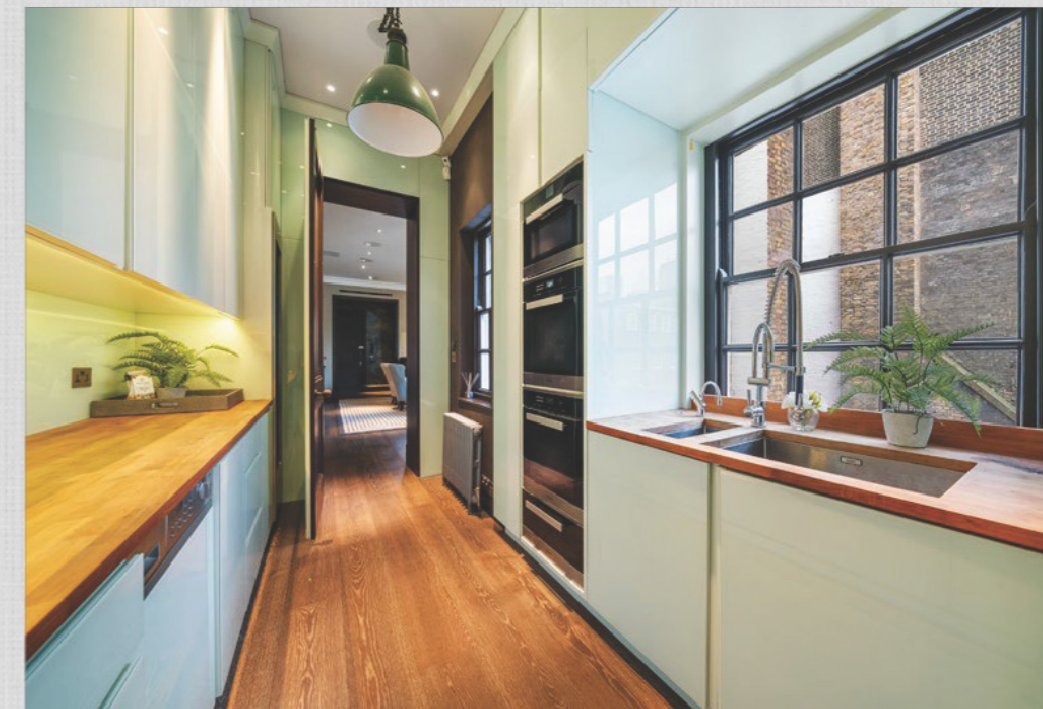
The apartment boasts wonderful volume throughout and a 550 sq ft open-plan reception/dining room. The principal bedroom is at the rear of the apartment, with a walk-through wardrobe and a luxurious master en suite. In addition, there is a wonderful guest bedroom and a modern kitchen.

KEY FEATURES

- Prime Mayfair location near Berkeley Square
- Stylish & well presented
- First floor
- High ceilings
- Lift

ACCOMMODATION & AMENITIES

- Entrance hall
- Reception room
- Kitchen
- Principal bedroom with ensuite
- Bedroom two
- Shower room





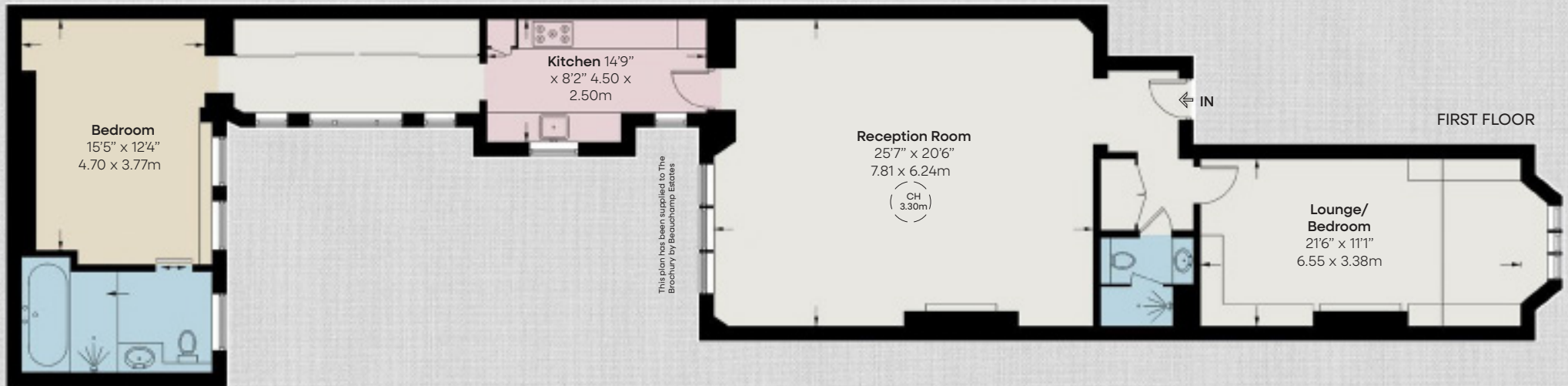
Location

Located on a prestigious street just off Berkeley Square, the property is in the perfect position in Mayfair, one of London's finest neighbourhoods with its handsome architecture, historic buildings, beautiful parks and garden squares. The area is famous for its luxury shopping, world class restaurants and hotels, private members' clubs and art galleries. There are excellent transport links from nearby Green Park (0.3 miles), Hyde Park Corner (0.5 miles), Bond Street (0.6 miles) and Piccadilly Circus (1.3 miles) underground stations. Crossrail will also be available at Bond Street station. The greenery of Hyde Park (0.4 miles) and Green Park (0.3 miles) are also close by.



APPROXIMATE FLOOR AREA

1,422 sq ft / 132.1 sq m



PRICE

£4,395,000

LOCAL AUTHORITY

Westminster City

COUNCIL TAX

Band H

EPC

Rating E



+44 (0)20 7499 7722

Beauchamp Estates Head Office
24 Curzon Street
Mayfair, London W1J 7TF
londonsales@beauchamp.com
beauchamp.com

Beauchamp Estates, their clients and any joint agents give notice that: 1. They are not authorised to make or give any representation or warranties in relation to the property either here or elsewhere, either on their own behalf or on behalf of their client or otherwise. They assume no responsibility for any statement that may be made in these particulars. These particulars do not form part of any offer or contract and must not be relied upon as statements or representations of fact. 2. Any Areas, measurements or distances are approximate. The text photographs and plans are for guidance only and are not necessarily comprehensive. It should not be assumed that the property has all necessary planning, building regulation or other consents and Beauchamp Estates have not tested any services, equipment or facilities. Purchasers must satisfy themselves by inspection or otherwise. 21/05/24 BEAU-240520-01-GG