

# Charles Street

MAYFAIR W1





## Charles Street



An elegant and well-presented first floor apartment of approximately 1,340 sq ft within a period Portland stone building dating from 1900, with 12ft ceilings throughout and benefiting from a lift and share of freehold.

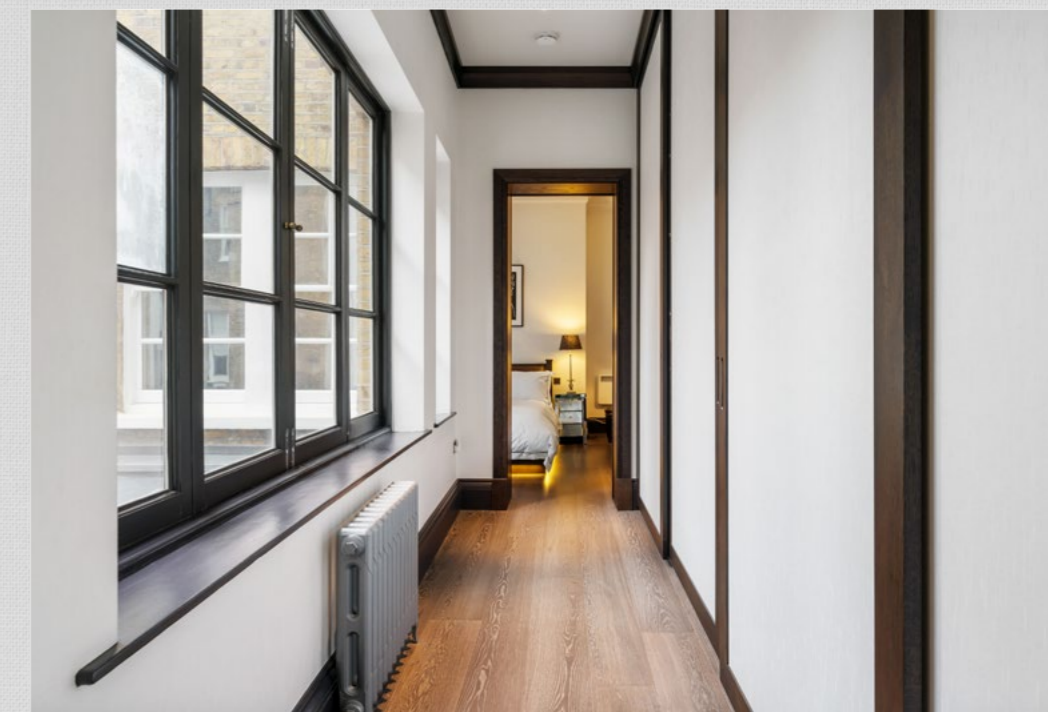
The apartment boasts wonderful volume throughout and a 550 sq ft open-plan reception/dining room. The principal bedroom is at the rear of the apartment, with a walk-through wardrobe and a luxurious master en suite. In addition, there is a wonderful guest bedroom and a modern kitchen.

### KEY FEATURES

- Prime Mayfair location near Berkeley Square
- Stylish & well presented
- First floor
- High ceilings
- Lift

### ACCOMMODATION & AMENITIES

- Entrance hall
- Reception room
- Kitchen
- Principal bedroom with ensuite
- Bedroom two
- Shower room





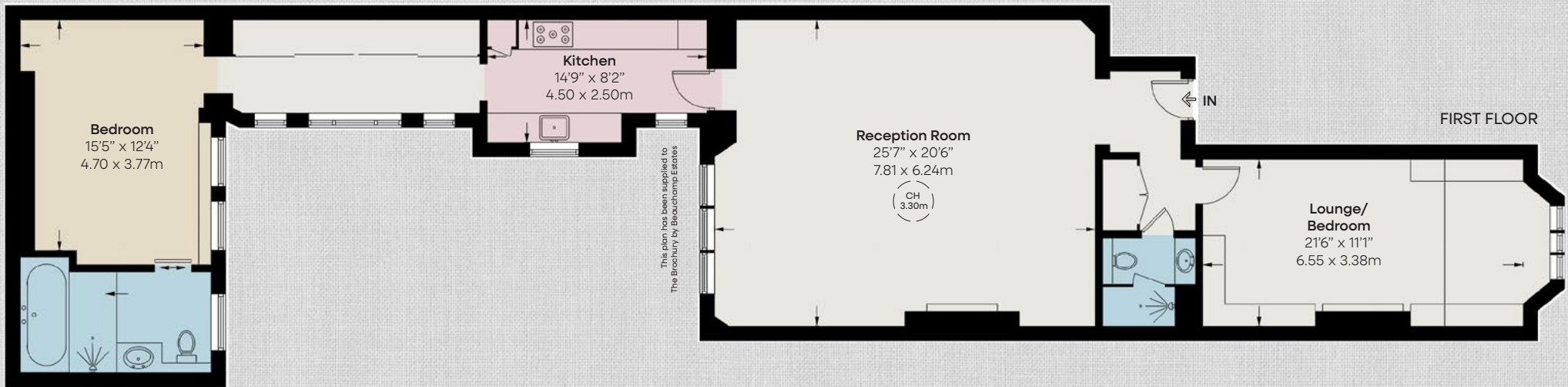
## Location

Located on a prestigious street just off Berkeley Square, the property is in the perfect position in Mayfair, one of London's finest neighbourhoods with its handsome architecture, historic buildings, beautiful parks and garden squares. The area is famous for its luxury shopping, world class restaurants and hotels, private members' clubs and art galleries. There are excellent transport links from nearby Green Park (0.3 miles), Hyde Park Corner (0.5 miles), Bond Street (0.6 miles) and Piccadilly Circus (1.3 miles) underground stations. Crossrail will also be available at Bond Street station. The greenery of Hyde Park (0.4 miles) and Green Park (0.3 miles) are also close by.



APPROXIMATE FLOOR AREA

1,422 sq ft / 132.1 sq m



**BEAUCHAMP  
ESTATES**

**+44 (0)20 7499 7722**

Beauchamp Estates Head Office  
24 Curzon Street  
Mayfair, London W1J 7TF  
londonsales@beauchamp.com  
beauchamp.com