



Thurloe Street

SOUTH KENSINGTON SW7



Thurloe Street presents a spectacular five bedroom home which has been recently modernised to provide ample space for living and entertaining.



The rear reception room is nestled inside a dramatic glass extension opening onto a private manicured garden area perfect for summer in the city.

There are two further reception rooms including a first-floor reception room with French doors onto a private balcony overlooking the picturesque street.

The home comprises five bedrooms including a principal suite with an en-suite bathroom and dressing room occupying the entire second floor of the property, four bathrooms, a study, dining room, kitchen, utility room and plenty of storage.

Other benefits of the home include air conditioning throughout and access to Thurloe Square Gardens, magnificent communal gardens with a children's play area.

ACCOMMODATION & AMENITIES

- Entrance hall
- Three reception rooms
- Kitchen
- Dining room
- Principal bedroom with en-suite bathroom and walk-in wardrobe
- Three guest bedrooms with en-suite bathrooms
- Guest bedroom
- Study
- Private garden
- Private balcony
- Utility room
- Two guest cloakrooms
- Vault storage

LOCATION

Located in the heart of South Kensington, Thurloe Street is surrounded by acclaimed galleries and museums including the Natural History Museum and the Victoria & Albert Museum. Locally there is an abundance of luxury boutiques, cafes and restaurants in addition to London's top independent schools. South Kensington Underground Station (Circle & District Lines) is a short walk away offering connections to the wider city.



APPROXIMATE GROSS
INTERNAL AREA

3,199 sq ft
297.1 sq m

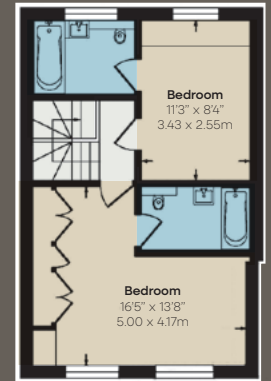
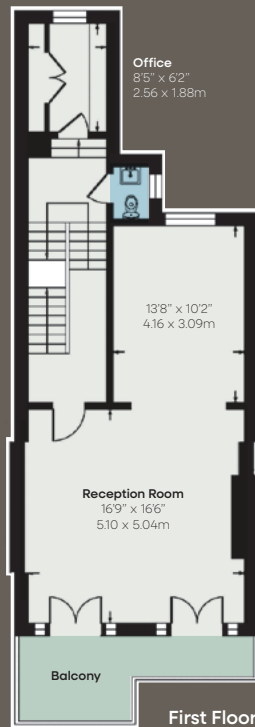
Tenure
Freehold

Guide Price
£7250,000

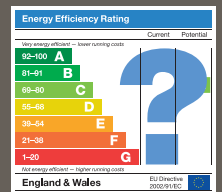
Local Authority
Kensington & Chelsea

Council Tax
Band H

EPC
Rating E



The plan has been prepared to the best of our knowledge by Beauchamp Estates



**BEAUCHAMP
ESTATES**

+44 (0)20 7499 7722

Beauchamp Estates Head Office
24 Curzon Street
Mayfair, London W1J 7TF
londonsales@beauchamp.com
beauchamp.com

THE
BRICHAURY

Beauchamp Estates, their clients and any joint agents give notice that: 1. They are not authorised to make or give any representation or warranties in relation to the property either here or elsewhere, either on their own behalf or on behalf of their client or otherwise. They assume no responsibility for any statement that may be made in these particulars. These particulars do not form part of any offer or contract and must not be relied upon as statements or representations of fact. 2. Any Areas, measurements or distances are approximate. The text photographs and plans are for guidance only and are not necessarily comprehensive. It should not be assumed that the property has all necessary planning, building regulation or other consents and Beauchamp Estates have not tested any services, equipment or facilities. Purchasers must satisfy themselves by inspection or otherwise. 29/02/24 BEAU-240227-02-GG