



Churchill Road

Earls Barton, Northamptonshire

oriordanbond
SALES & LETTINGS



Churchill Road

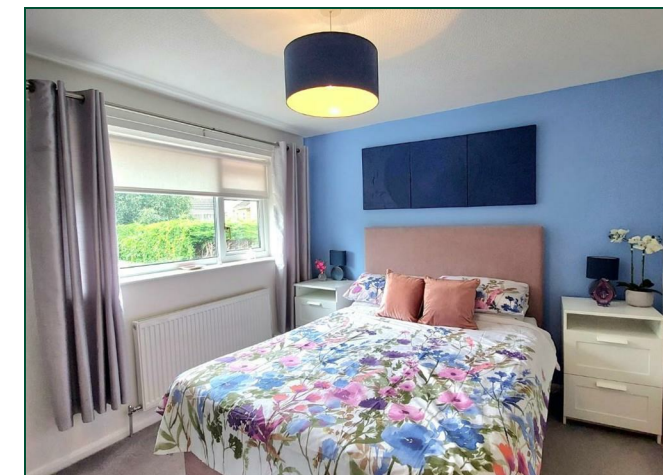
Earls Barton
NN6 0PQ

Price
£428,500

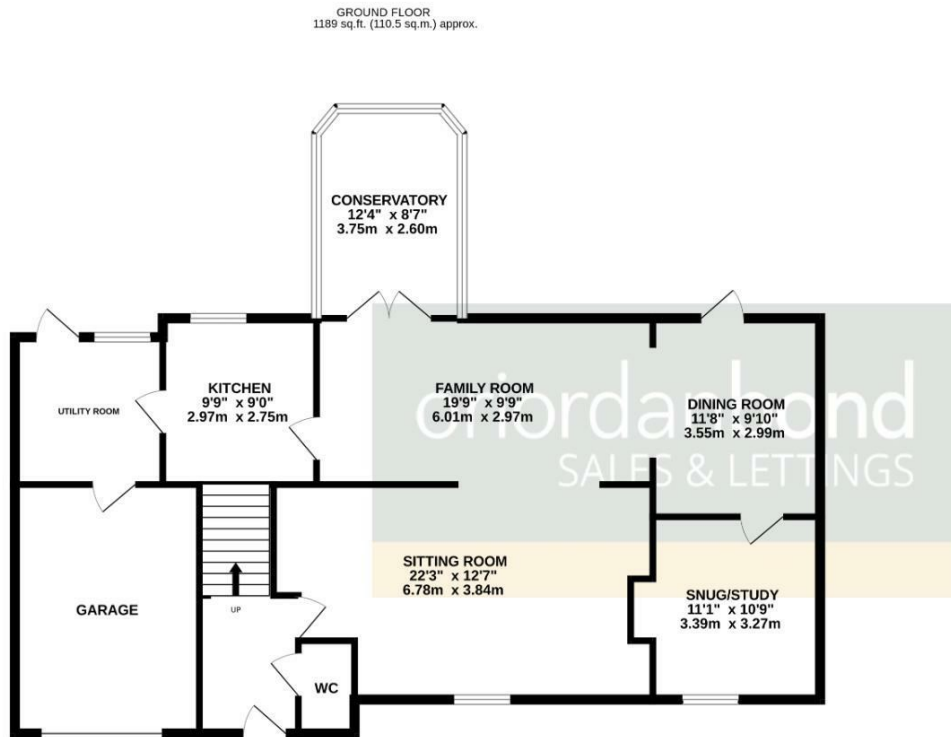
A fabulous three bedroom extended and spacious detached family home designed for modern living with open plan versatile accommodation and beautiful landscaped gardens set in a sought after location within easy walking distance to the centre of the village of Earls Barton with excellent amenities and primary school.

The accommodation comprises entrance hall, cloakroom/WC, open plan sitting/family/dining room, snug/study, fitted kitchen, utility room with internal door opening to the garage and a further door to rear garden, conservatory with doors opening to the rear garden, first floor landing, refitted shower room, master bedroom with built-in wardrobes, a further double bedroom and single bedroom. Outside to the front is a well kept lawn area enclosed with hedging, two driveways providing parking for three cars and a single garage. To the rear is a large private enclosed beautifully landscaped garden providing private seating terrace, summerhouse, large lawn, patio area, mature trees and planting, storage shed, greenhouse and side gated access to the front. Further benefits include uPVC double glazing and gas radiator heating. (A/1622/M)

- Spacious extended three bedroom detached home
- Open plan sitting/family/dining room
- Snug/study
- Conservatory
- Enclosed landscaped gardens
- Garage and off road parking







TOTAL FLOOR AREA : 1622 sq.ft. (150.7 sq.m.) approx.

Whilst every attempt has been made to ensure the accuracy of the floorplan contained here, measurements of doors, windows, rooms and any other items are approximate and no responsibility is taken for any error, omission or mis-statement. This plan is for illustrative purposes only and should be used as such by any prospective purchaser. The services, systems and appliances shown have not been tested and no guarantee as to their operability or efficiency can be given.
Made with Metropix ©2024



Additional information

- Council Tax Band: D
- Energy Efficiency Rating: D

Viewing

Viewing strictly by appointment – details below

Disclaimer

O'Riordan Bond Estate Agents Limited has not tested apparatus, equipment, fittings or services and so cannot verify they are in working order. The buyer is advised to obtain verification from their solicitor or surveyor.

O'Riordan Bond Earls Barton Sales

01604 810088

earlsbarton@oriordanbond.co.uk

