



Waples Close

Earls Barton, Northamptonshire

oriordanbond
SALES & LETTINGS



Waples Close

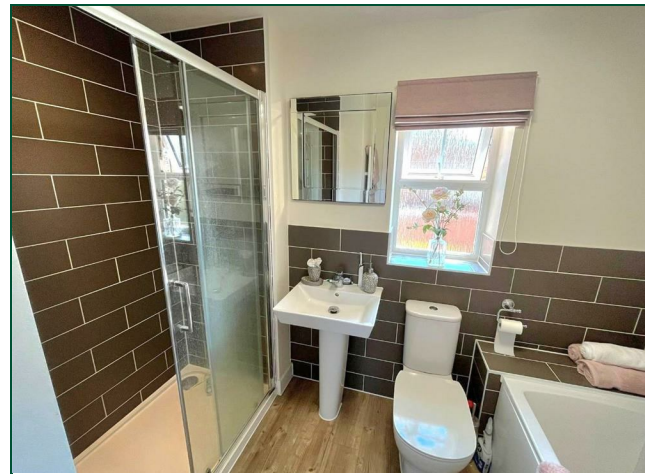
Earls Barton
NN6 0FQ

Price
£475,000

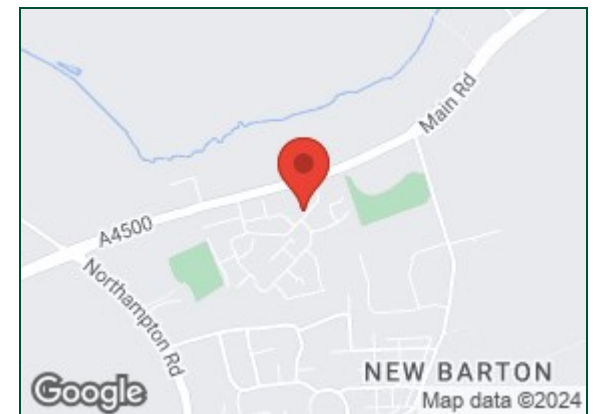
A spacious four double bedroom detached home built by Messrs David Wilson Homes to their popular 'Avondale' design, located on the sought after 'Wickets Development'. The property is located within the thriving village of Earls Barton offering a wealth of amenities to include schooling, doctors, shops and coffee houses. The property is beautifully presented enjoying a corner position with part walled garden offering a good degree of privacy with south facing rear garden.

Accommodation comprises entrance hall, cloakroom/WC, large sitting room with French doors to the rear garden, study, kitchen/dining/family room with fitted appliances and granite work surfaces, utility room, first floor landing, master bedroom with fitted wardrobes and en-suite shower room, three further double bedrooms and a family bathroom. Outside, to the front is an open plan garden with driveway to the side leading to a single garage with power and light connected. To the rear is a lovely south facing part walled landscaped garden with patio area ideal for entertaining and mature planting. Further benefits include gas central heating, uPVC double glazed windows and doors and remaining NHBC warranty. (A/1364/M)

- Spacious four bedroom detached home
- En-suite to master bedroom
- Kitchen/dining/family room
- Gas radiator heating
- Enclosed landscaped south facing rear garden
- Driveway and garage







Additional information

- Council Tax Band: E
- Energy Efficiency Rating: B

Viewing

Viewing strictly by appointment – details below

Disclaimer

O’Riordan Bond Estate Agents Limited has not tested apparatus, equipment, fittings or services and so cannot verify they are in working order. The buyer is advised to obtain verification from their solicitor or surveyor.

O’Riordan Bond Earls Barton Sales

01604 810088

earlsbarton@oriordanbond.co.uk

