



45 Thorpe Road
Earls Barton, Northamptonshire

oriordanbond
SALES & LETTINGS



45 Thorpe Road

Earls Barton

NN6 0PJ

PRICE £265,000

A beautifully presented and spacious three bedroom family property, situated on a corner plot, built by Messrs Redrow Homes. This well appointed home is located in the thriving village of Earls Barton with a wealth of amenities to include schooling and doctors surgery.

Offered for sale with no onward chain, the accommodation comprises entrance hall, cloakroom/WC, utility cupboard, spacious kitchen/dining room, sitting room overlooking the rear garden, master bedroom with en-suite, two further bedrooms and a family bathroom. Outside, the property sits on a corner plot with open plan front garden and a southerly facing rear garden being part walled and designed for easy maintenance with access via a gate to private driveway providing parking for two cars. Further benefits include uPVC windows and doors and gas radiator heating. (A/778/M)

Additional information

- Council Tax Band: C
- Energy Efficiency Rating: B

Viewing

Viewing strictly by appointment – details below

Disclaimer

O’Riordan Bond Estate Agents Limited has not tested apparatus, equipment, fittings or services and so cannot verify they are in working order. The buyer is advised to obtain verification from their solicitor or surveyor.

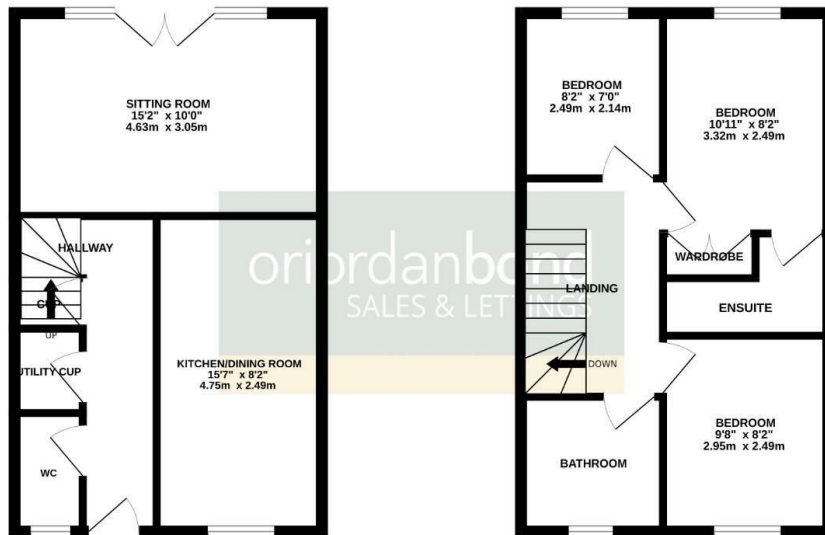
O’Riordan Bond Earls Barton Sales

01604 810088

earlsbarton@oriordanbond.co.uk

GROUND FLOOR

1ST FLOOR



TOTAL FLOOR AREA: 778 sq.ft. (72.3 sq.m.) approx.

Whilst every attempt has been made to ensure the accuracy of the floorplan contained here, measurements of doors, windows, rooms and any other items are approximate and no responsibility is taken for any error, omission or mis-statement. This plan is for illustrative purposes only and should be read in conjunction with any prospective purchaser. The services, systems and appliances shown have not been tested and no guarantee as to their operability or efficiency can be given.
Made with Metreplex ©2024