



10 Flowerhill Drive
Wellingborough, Northamptonshire

oriordanbond
TOWN & COUNTRY



10 Flowerhill Drive

Wellingborough

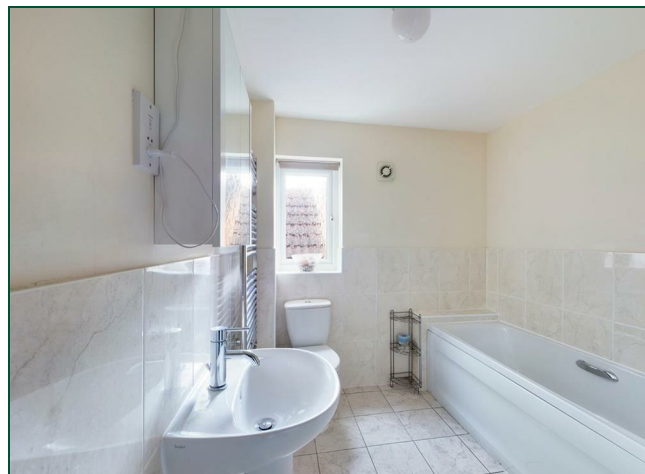
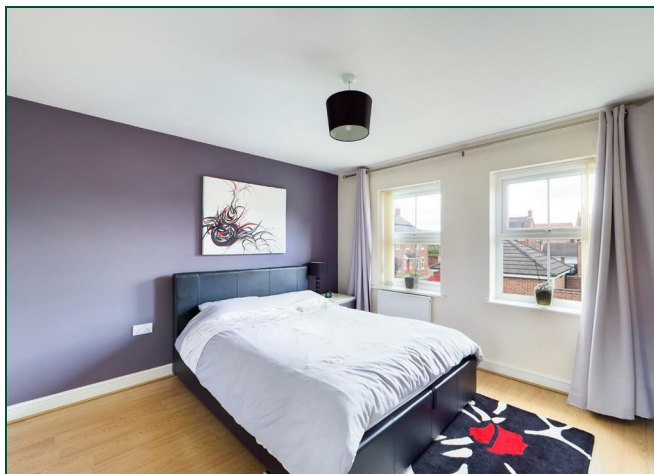
NN8 4GF

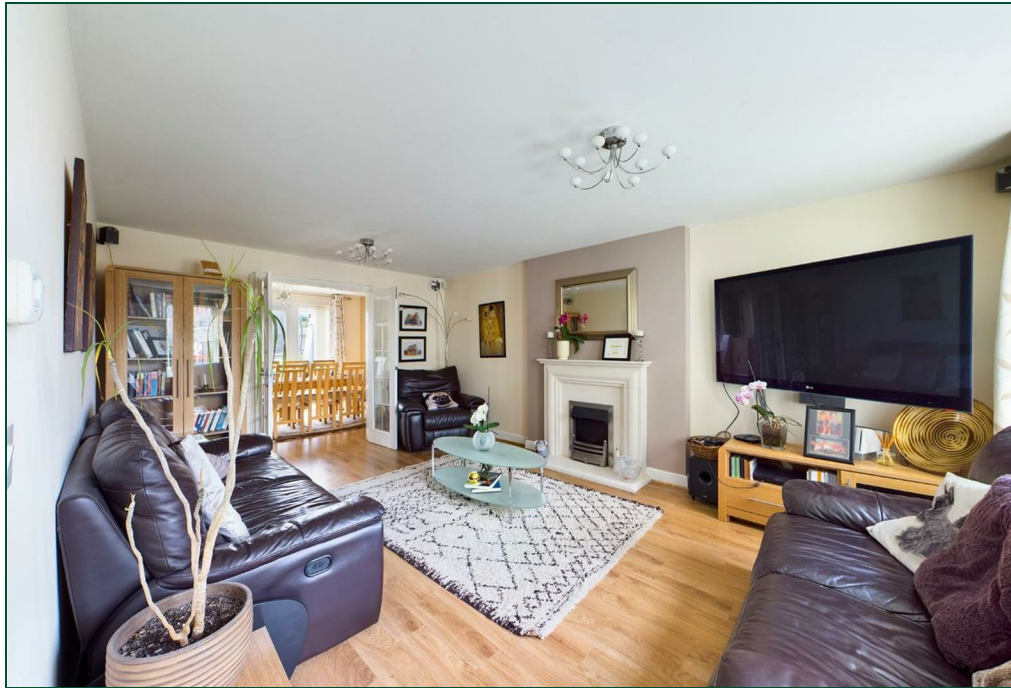
£399,995

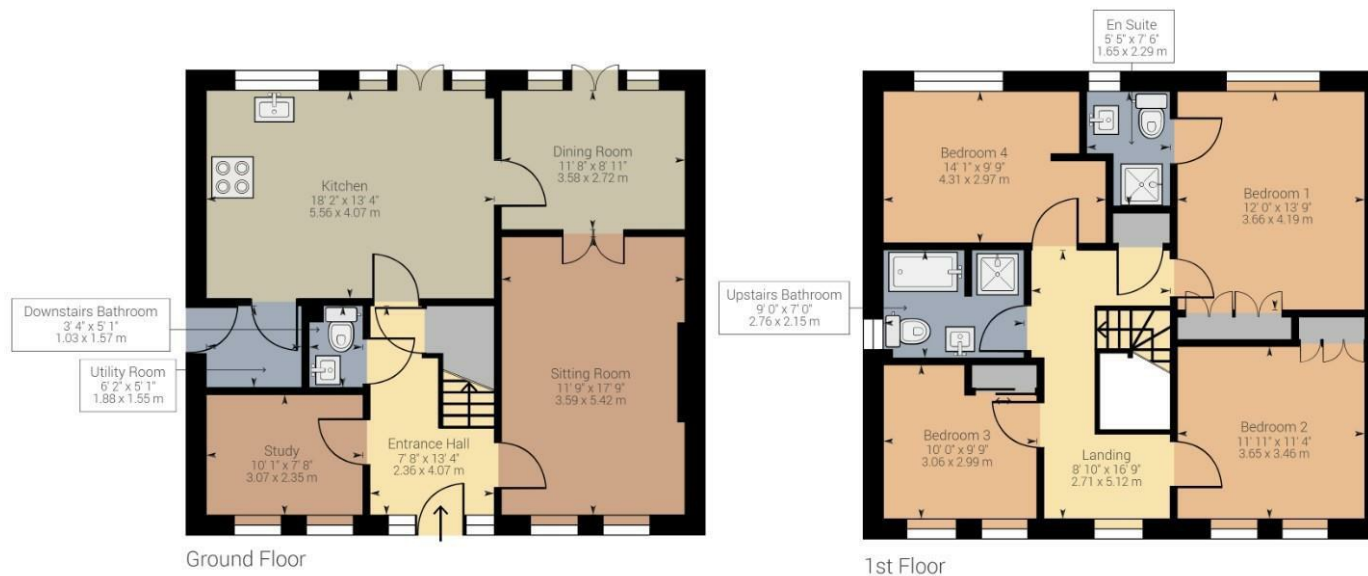
An executive spacious David Wilson built detached family home, situated in a quiet cul-de-sac position, within walking distance of the railway station providing fast link to London St. Pancras.

Entrance hall, sitting room, dining room, study, kitchen/breakfast/family room, utility room, cloakroom/WC, galleried first floor landing, master bedroom with en-suite, three further good size bedrooms and a family bathroom. Outside is an open plan front garden with double width drive leading to a detached double garage and a good size enclosed south/westerly facing rear garden. Further benefits include uPVC double glazing and gas central heating. (A/1599/M)

- Executive four bedroom detached home
- En-suite to master bedroom
- Three reception rooms
- Kitchen/breakfast/family room
- Enclosed south/westerly rear garden
- Ample off road parking
- Detached double garage







Approximate net internal area: 1599.41 ft² / 148.59 m²

While every attempt has been made to ensure accuracy, all measurements are approximate, not to scale. This floor plan is for illustrative purpose only and should be used as such by any prospective tenant or purchaser.

Powered by Giraffe360



Additional information

- Council Tax Band: E
- Energy Efficiency Rating: C

Viewing

Viewing strictly by appointment – details below

Disclaimer

O'Riordan Bond Estate Agents Limited has not tested apparatus, equipment, fittings or services and so cannot verify they are in working order. The buyer is advised to obtain verification from their solicitor or surveyor.

O'Riordan Bond Earls Barton Sales

01604 810088

earlsbarton@oriordanbond.co.uk