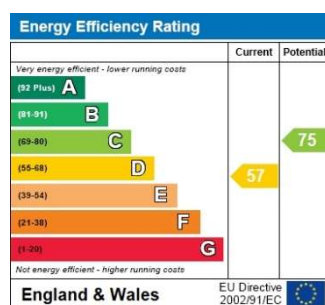
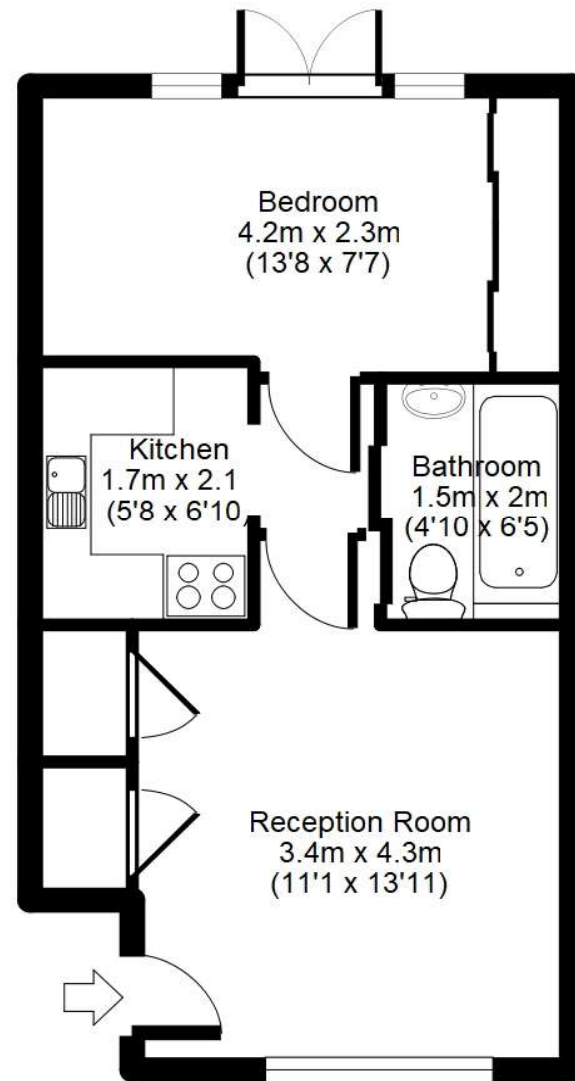


Wordsworth Court, Hatfield, AL10

APPROX GROSS INTERNAL FLOOR AREA: 341 sq. ft / 32 sq. m



For identification purposes only
Measurements are approx and not to scale

Wordsworth Court Middlefield, Hatfield Leasehold

Price £170,000



PERFECT FOR FIRST TIME AND EXPERIENCED INVESTORS! This modern purpose built ground floor one bedroom flat is situated within this popular cul-de-sac location close to Hatfield Town Centre, The Galleria and Hatfield Business Park.

- One Bed Purpose Built Flat
- Popular Cul-De-Sac Location
- Close to Hatfield Business Park, Galleria & Town Centre
- Living Room
- Fitted Kitchen
- Communal Gardens





Front Door

Own access from communal parking area. Door to:

Living Room

11'6" (3.51m) x 11'7" (3.53m)

Television point. Telephone point. Multiple plug points. Two built in cupboards. Double glazed window to front.

Kitchen

5'6" (1.68m) x 6'8" (2.03m)

Comprising a range of matching fitted wall and base units. Stainless steel sink unit with mixer tap. Part tiled walls. Gas cooker. Space for upright fridge freezer. Plumbing for washing machine.

Family Bathroom

Comprising of panel enclosed bath. Electric shower. Fully tiled. Low level WC. Wash hand basin with mixer tap. Extractor fan.

Bedroom One

7'3" (2.21m) x 11'6" (3.51m)

Built in double wardrobes. Multiple plug points. Double glazed window and patio doors to communal gardens.

External

Communal Gardens

Laid to lawn communal garden. Trees and bushes to borders.

Parking

Allocated parking for flats located within the block with ample visitor parking spaces.

Agent's Note

Please note that an introduction or property management fee may be payable to Raine and Co for the new tenants. Please ask a member of our sales team for more information.

Further Details

The property is Leasehold

Council Tax Band - Band D