

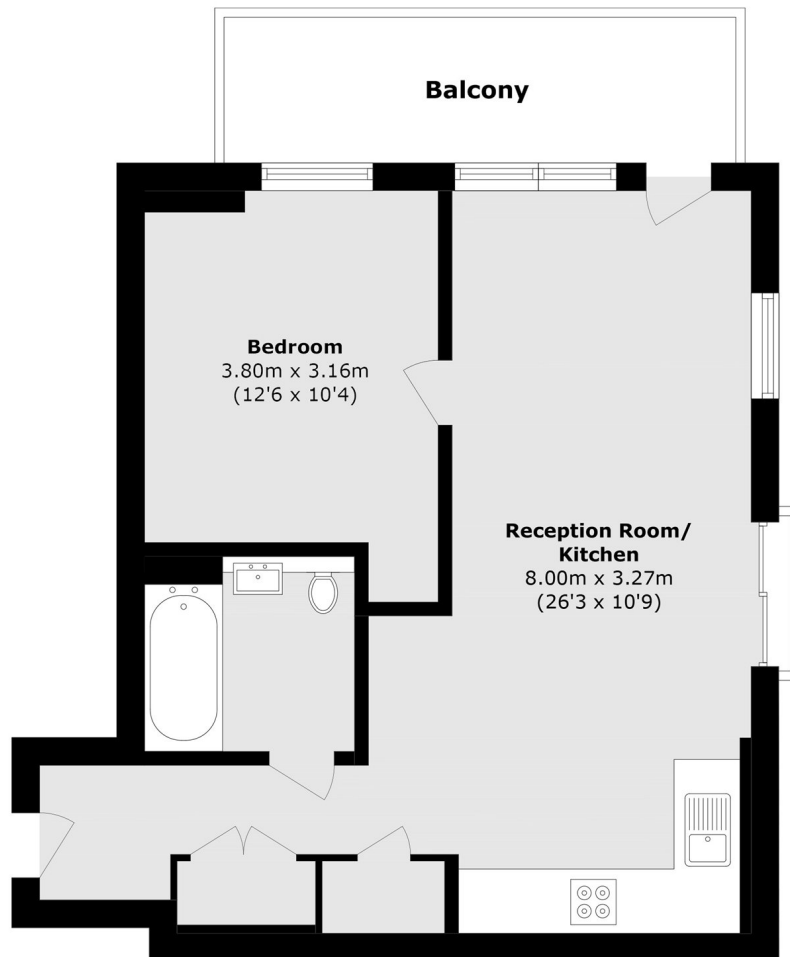


## Heartwood Boulevard, W3

£450,000

A stunning top floor one bedroom apartment in this new development opposite Acton Main Line. Located on the 23rd floor with panoramic views across London, private balcony and concierge. A gym, spin studio and business lounge will be available later this year.

Located close to Acton Main Line and just over half a mile from Acton Central stations and the amenities of Churchfield Road.



Total area (approx.): 53.7 sq. m (578.0 sq. ft)

Balcony area (approx.): 8.6 sq. m (92.5 sq. ft)

Robertson Smith & Kempson Hanwell Sales  
69 Greenford Avenue,  
London, W7 1LL  
020 8566 2339  
[hanwellsales@robertsonsmithandkempson.co.uk](mailto:hanwellsales@robertsonsmithandkempson.co.uk)

Energy Rating: . We aim to make our particulars both accurate and reliable. However they are not guaranteed; nor do they form part of an offer or contract. If you require clarification on any points then please contact us, especially if you're traveling some distance to view. Please note that appliances and heating systems have not been tested and therefore no warranties can be given as to their good working order.