

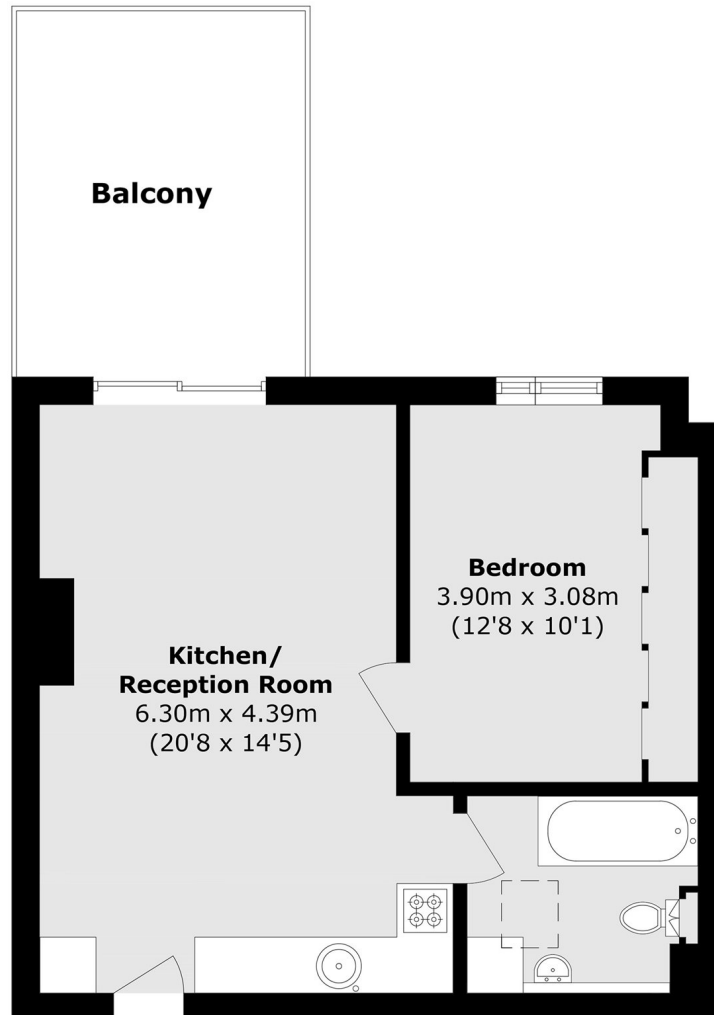


## Ramsay Road, W3

£325,000

A bright one-bedroom first-floor flat in good condition on the Chiswick borders, offering a private southwest-facing terrace, a share of the freehold, and easy access to South Acton Park and South Acton station.

Ramsay Road is within 500 metres of South Acton station and is half a mile from Chiswick Park (District Line) station, both of which provide excellent access into town.



Total area (approx.): 44.2 sq. m (475.8 sq. ft)  
Balcony area (approx.): 12.7 sq. m (136.7 sq. ft)

Robertson Smith & Kempson Acton Sales  
137 High Street, Acton,  
London, W3 6LY  
020 8896 3996  
[actonsales@robertsonsmithandkempson.co.uk](mailto:actonsales@robertsonsmithandkempson.co.uk)

Energy Rating: C. We aim to make our particulars both accurate and reliable. However they are not guaranteed; nor do they form part of an offer or contract. If you require clarification on any points then please contact us, especially if you're traveling some distance to view. Please note that appliances and heating systems have not been tested and therefore no warranties can be given as to their good working order.