



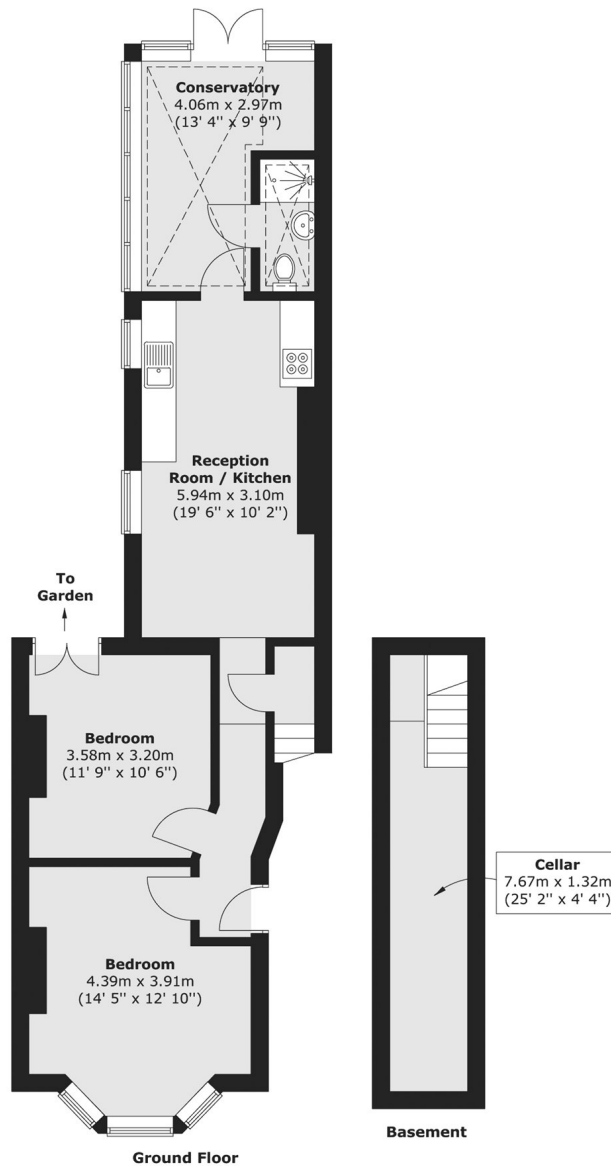
Avenue Road, W3

£623 pw (£2,700.00 pcm)

A newly refurbished split-level flat on the borders of Acton and Chiswick with high ceilings and wooden flooring.

Close to Acton Town, Chiswick Park and Acton Central (Overground) stations.

- Three Bedrooms • Split-Level • Newly Refurbished •
- Two Bathrooms • Gas Central Heating • Ark Priory



Total area (approx.) : 75.9 sq. m (817 sq. ft)

Robertson Smith & Kempson Acton Lettings
137 High Street,
Acton, London, W3
020 8896 3967
actonlettings@robertsonsmithandkempson.co.uk

Energy Rating: D. We aim to make our particulars both accurate and reliable. However they are not guaranteed; nor do they form part of an offer or contract. If you require clarification on any points then please contact us, especially if you're traveling some distance to view. Please note that appliances and heating systems have not been tested and therefore no warranties can be given as to their good working order.