

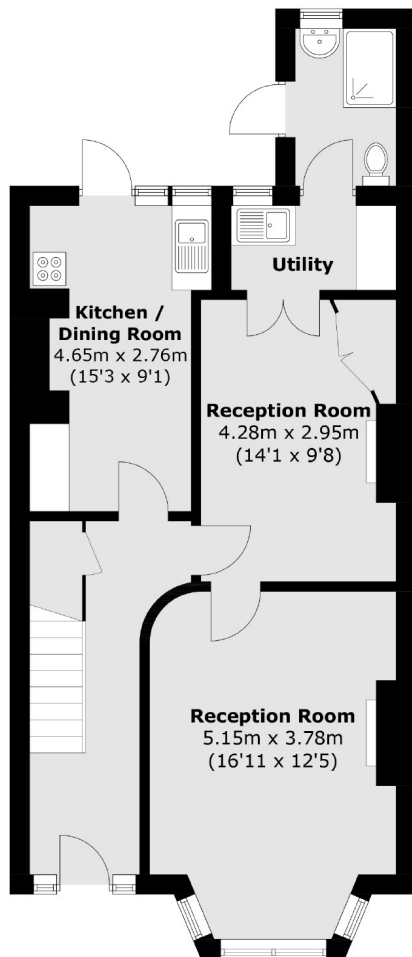


Derwentwater Road, W3

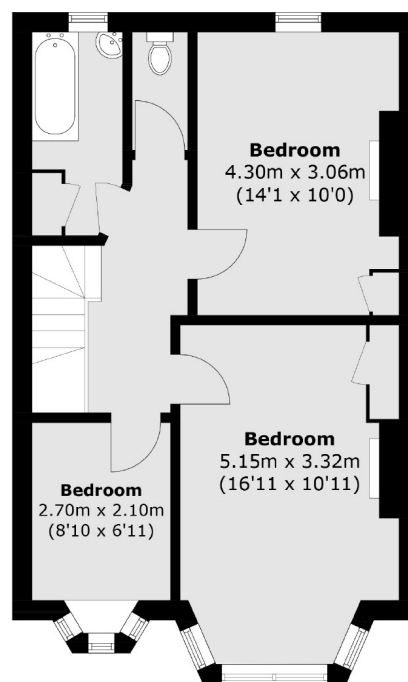
£900,000

A semi-detached three bedroom family home located just off the popular Churchfield Road. The property is in need of modernisation throughout and offers potential to extend both on the ground floor and into the loft.

Derwentwater Road is moments from Acton Central station and is half a mile from Acton Main Line (Elizabeth Line). It is also close to a number of excellent primary schools including Derwentwater



Ground Floor



First Floor

Total area (approx.): 113.3 sq. m (1,219.5 sq. ft)

Robertson Smith & Kempson Hanwell Sales
69 Greenford Avenue,
London, W7 1LL
020 8566 2339
hanwellsales@robertsonsmithandkempson.co.uk

Energy Rating: . We aim to make our particulars both accurate and reliable. However they are not guaranteed; nor do they form part of an offer or contract. If you require clarification on any points then please contact us, especially if you're traveling some distance to view. Please note that appliances and heating systems have not been tested and therefore no warranties can be given as to their good working order.