

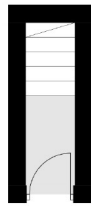


Acton Lane, W3

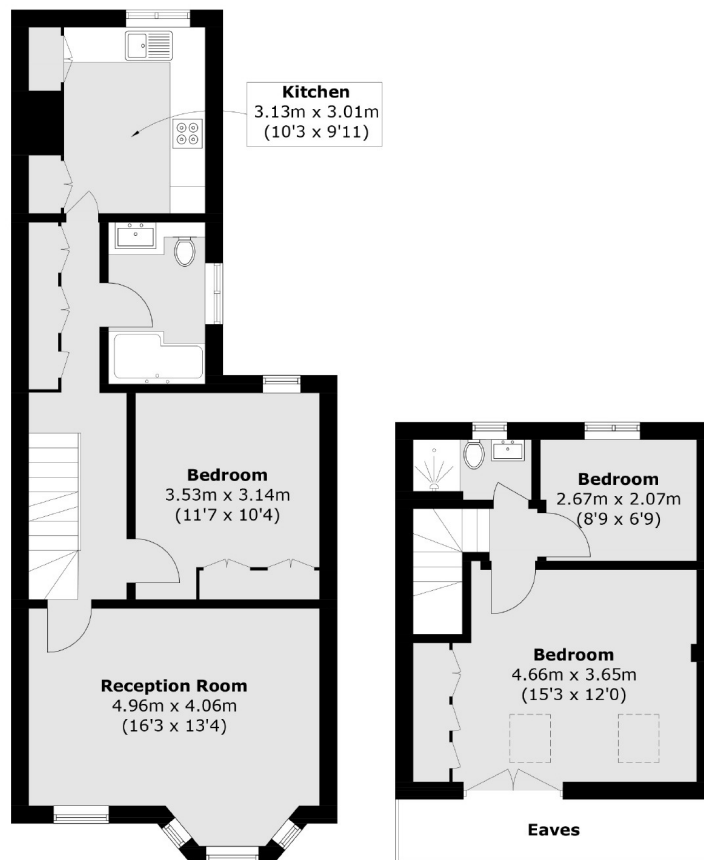
£550,000

A stunning three bedroom, two bathroom split-level period conversion flat on the borders of Chiswick. The property offers in excess of 900 sq.ft of accommodation, is in excellent condition throughout and has a share of the freehold.

Located just off Acton High Street and within half a mile of South Acton and Acton Central stations as well as the shops and amenities of Churchfield Road.



Ground Floor



First Floor

Second Floor

Total area (approx.): 85.8 sq. m (923.5 sq. ft)
(Excluding Eaves)

Robertson Smith & Kempson Acton Sales
137 High Street, Acton,
London, W3 6LY
020 8896 3996
actonsales@robertsonsmithandkempson.co.uk

Energy Rating: D. We aim to make our particulars both accurate and reliable. However they are not guaranteed; nor do they form part of an offer or contract. If you require clarification on any points then please contact us, especially if you're traveling some distance to view. Please note that appliances and heating systems have not been tested and therefore no warranties can be given as to their good working order.