

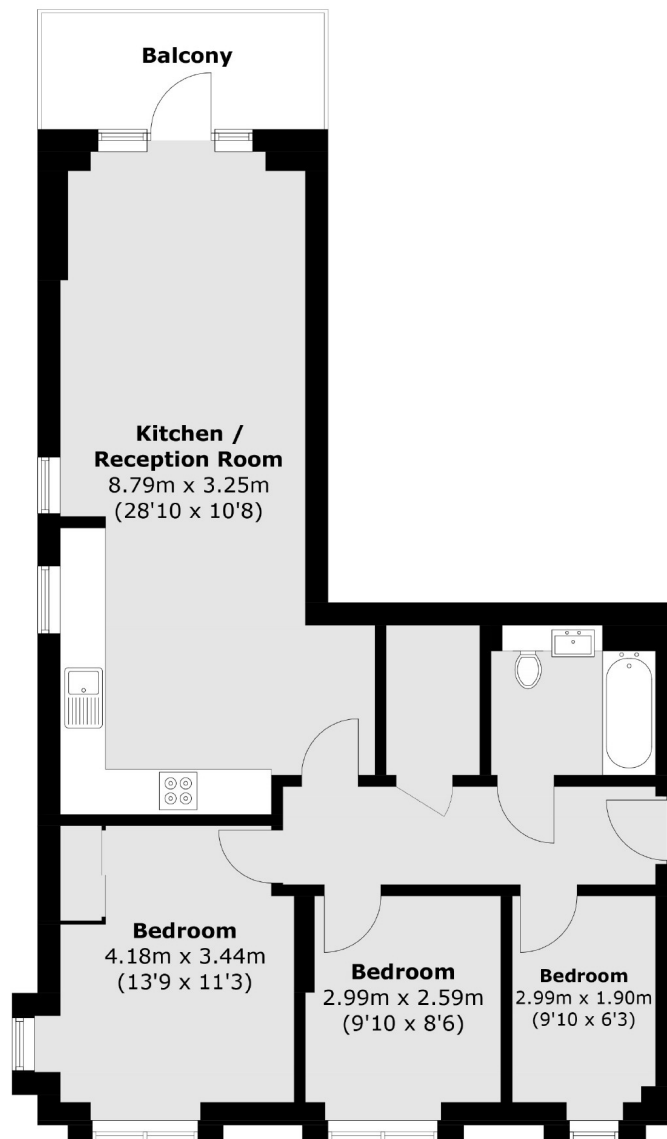


## **Colonnade Gardens, W3**

**£550,000**

A modern three bedroom apartment in this gated development on the borders of Chiswick and Shepherds Bush. The property is in immaculate condition throughout, has a private balcony and access to large communal gardens.

Colonnade Gardens is just over half a mile from Acton Central and within a mile of Stamford Brook and Turnham Green stations. Wendell Park and Acton Park are also within walking distance.



Total area (approx.): 71.2 sq. m (766.4 sq. ft)  
Balcony area: 5.8 sq. m (62.4 sq. ft)

Robertson Smith & Kempson Acton Sales  
137 High Street, Acton,  
London, W3 6LY  
020 8896 3996  
[actonsales@robertsonsmithandkempson.co.uk](mailto:actonsales@robertsonsmithandkempson.co.uk)

Energy Rating: B. We aim to make our particulars both accurate and reliable. However they are not guaranteed; nor do they form part of an offer or contract. If you require clarification on any points then please contact us, especially if you're traveling some distance to view. Please note that appliances and heating systems have not been tested and therefore no warranties can be given as to their good working order.