

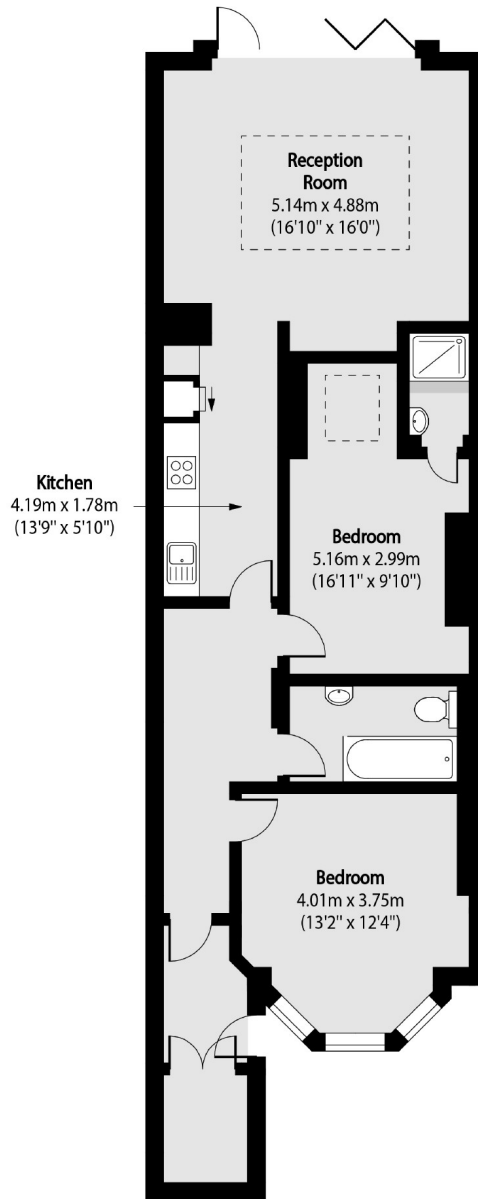


Larden Road, W3

£650,000

A recently refurbished garden flat in a period property on the borders of Chiswick and Shepherds Bush. The property offers in excess of 900 sq.ft of accommodation, has a private entrance, a large private garden and offers no onward chain.

Larden Road is just over half a mile from both Turnham Green and Acton Central stations both providing excellent access into town.



Total area (approx): 84.65 sq m (911 sq. ft)

Robertson Smith & Kempson Acton Sales
137 High Street, Acton,
London, W3 6LY
020 8896 3996
actonsales@robertsonsmithandkempson.co.uk

Energy Rating: C. We aim to make our particulars both accurate and reliable. However they are not guaranteed; nor do they form part of an offer or contract. If you require clarification on any points then please contact us, especially if you're traveling some distance to view. Please note that appliances and heating systems have not been tested and therefore no warranties can be given as to their good working order.