

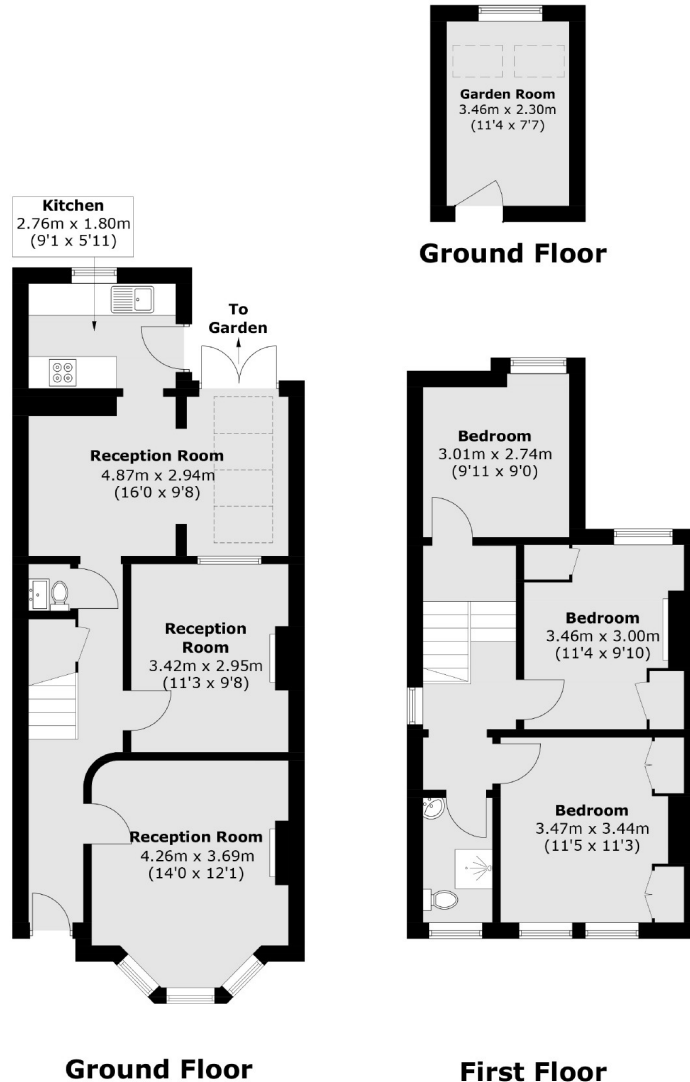


## Birkbeck Avenue, W3

£899,950

A semi-detached three bedroom family home. The property offers huge potential to extend both on the ground floor and into the loft subject to the usual consents and also has a home office at the end of the garden.

Birkbeck Avenue is within 500 metres of Acton Main Line for the Elizabeth Line and less than half a mile from Acton Central and the shops and amenities of Churchfield Road.



Total area (approx.): 100.4 sq. m (1,080.6 sq. ft)  
Outbuilding area (approx.): 8.0 sq. m (86,1 sq. ft)

Robertson Smith & Kempson Acton Sales  
137 High Street, Acton,  
London, W3 6LY  
020 8896 3996  
[actonsales@robertsonsmithandkempson.co.uk](mailto:actonsales@robertsonsmithandkempson.co.uk)

Energy Rating: D. We aim to make our particulars both accurate and reliable. However they are not guaranteed; nor do they form part of an offer or contract. If you require clarification on any points then please contact us, especially if you're traveling some distance to view. Please note that appliances and heating systems have not been tested and therefore no warranties can be given as to their good working order.