

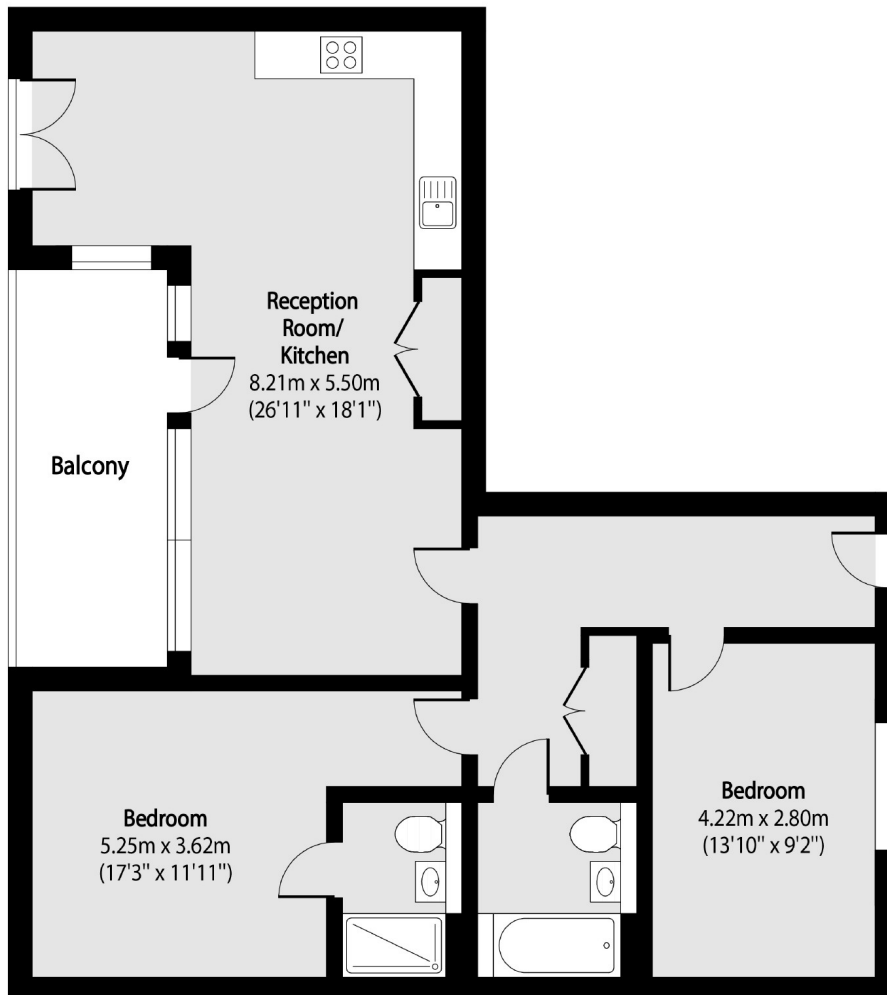
Packington Road, W3

£576 pw (£2500.00 pcm)

Flooded with natural light, this beautifully designed, immaculately presented peaceful two-bedroom, two-bathroom apartment offers an exceptional living experience in Acton Gardens.

High ceilings and expansive floor-to-ceiling windows span the south-facing side, creating a bright, airy atmosphere and maximising sunlight throughout the day.

Located on Packington Road, the apartment is perfectly



Total area (approx): 83.22 sq m (896 sq. ft)

Balcony total area (approx): 9.50 sq m (102 sq. ft)

Robertson Smith & Kempson Acton Lettings
137 High Street, Acton, London,
W3 6LY
020 8896 3967
actonlettings@robertsonsmithandkempson.co.uk

Energy Rating: B. We aim to make our particulars both accurate and reliable. However they are not guaranteed; nor do they form part of an offer or contract. If you require clarification on any points then please contact us, especially if you're traveling some distance to view. Please note that appliances and heating systems have not been tested and therefore no warranties can be given as to their good working order.