

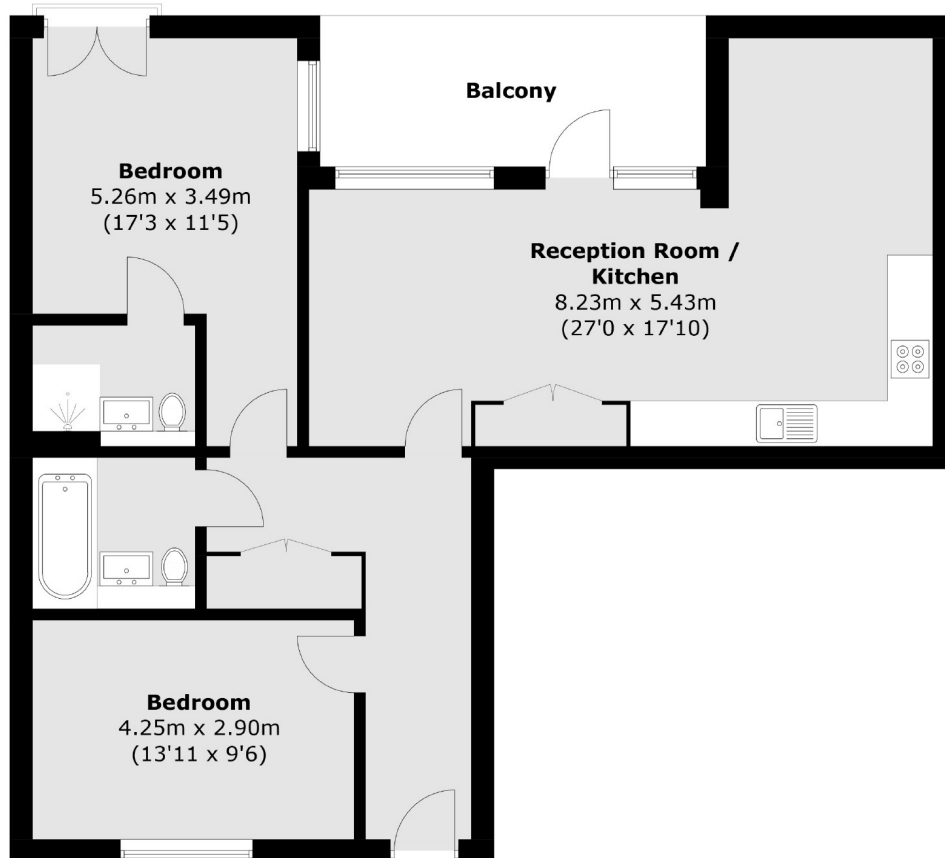


Packington Road, W3

£600 pw (£2600.00 pcm)

An immaculately presented two bedroom, two bathroom apartment with great living space which boasts a modern contemporary living area. Stapleton Court also offers a large private balcony with excellent views.

Packington Road is convenient for Acton Town, Chiswick Park and South Acton (Overground) stations and the various amenities of Acton High Street and Chiswick High Road.



Total area (approx.): 83.5 sq. m (898.8 sq. ft)
Balcony: 10.2 sq. m (109.8 sq. ft)

Robertson Smith & Kempson Acton Lettings
137 High Street, Acton, London,
W3 6LY
020 8896 3967
actonlettings@robertsonsmithandkempson.co.uk

Energy Rating: D. We aim to make our particulars both accurate and reliable. However they are not guaranteed; nor do they form part of an offer or contract. If you require clarification on any points then please contact us, especially if you're traveling some distance to view. Please note that appliances and heating systems have not been tested and therefore no warranties can be given as to their good working order.