

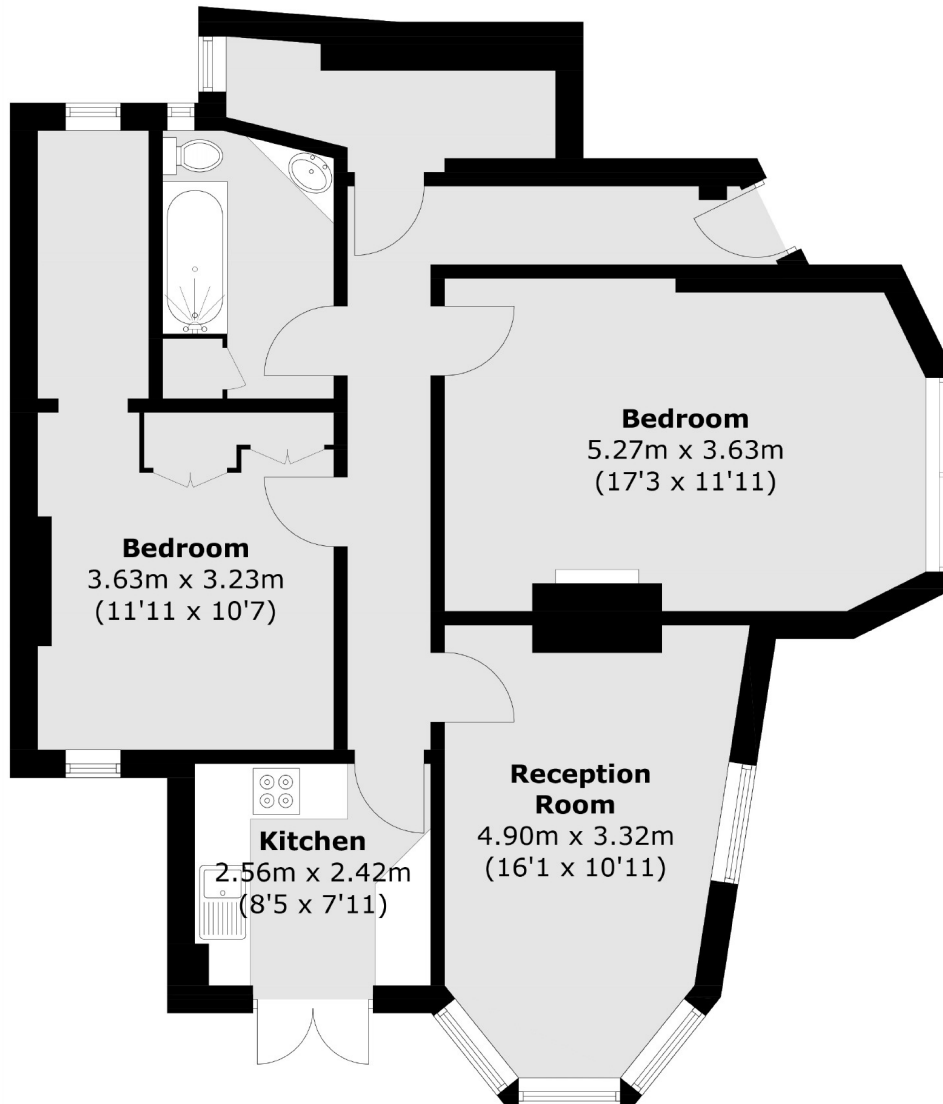


Newton Avenue, W3

£650,000

A two bedroom period conversion garden flat located on the borders of Chiswick. The property offers in excess of 800 sq.ft of accommodation, has a large wrap around garden and is offered with no onward chain

Newton Avenue is moments from the Ofsted outstanding Ark Priory Primary School and within half a mile of both South Acton and Acton Town stations offering excellent access into town.



Total area (approx.): 76.4 sq. m (822.4 sq. ft)

Robertson Smith & Kempson Acton Sales
137 High Street, Acton,
London, W3 6LY
020 8896 3996
actonsales@robertsonsmithandkempson.co.uk

Energy Rating: C. We aim to make our particulars both accurate and reliable. However they are not guaranteed; nor do they form part of an offer or contract. If you require clarification on any points then please contact us, especially if you're traveling some distance to view. Please note that appliances and heating systems have not been tested and therefore no warranties can be given as to their good working order.