

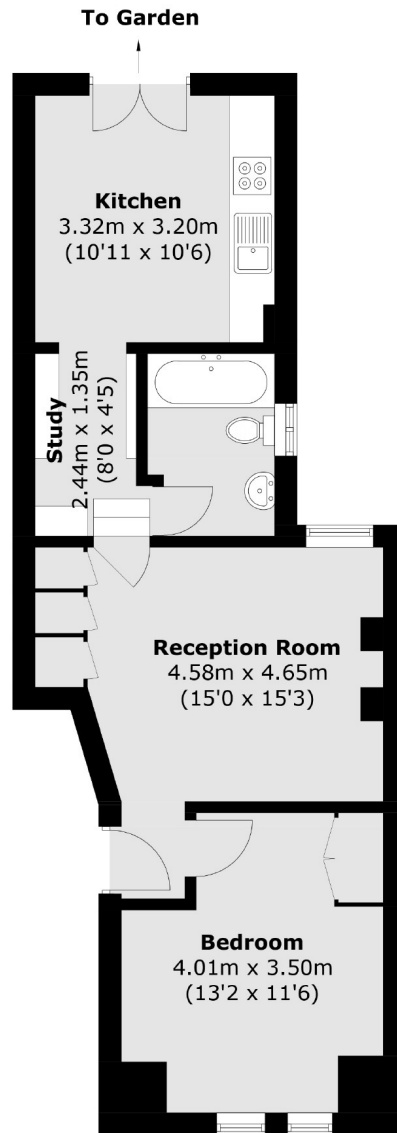


Midland Terrace, NW10

£369,950

A one bedroom period conversion garden flat. The property is excellent condition throughout has a private south facing garden and also offers further potential to extend subject to all the usual consents.

Midland Terrace is less than 500 metres from North Acton station and will benefit from the new Old Oak Common station for HS2 and Crossrail.



Total area (approx.): 48.6 sq. m (523.1 sq. ft)

Robertson Smith & Kempson Acton Sales
137 High Street, Acton,
London, W3 6LY
020 8896 3996
actonsales@robertsonsmithandkempson.co.uk

Energy Rating: C. We aim to make our particulars both accurate and reliable. However they are not guaranteed; nor do they form part of an offer or contract. If you require clarification on any points then please contact us, especially if you're traveling some distance to view. Please note that appliances and heating systems have not been tested and therefore no warranties can be given as to their good working order.