



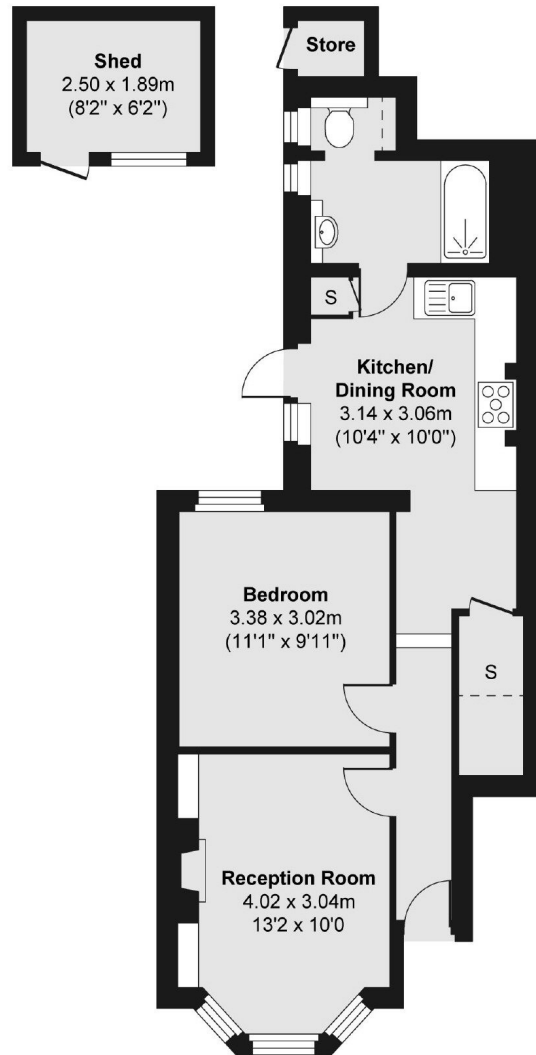
Petersfield Road, W3

£410,000

A one bedroom ground floor maisonette with a private garden on the borders of Chiswick. The property has a beautifully landscaped garden, a share of the freehold and offers the potential to extend subject to all the usual consents.

Petersfield Road is on the borders of Chiswick and within half a mile of South Acton station and the shop and amenities of Churchfield Road.

Ground Floor



Total area (approx.) 46.29 sq. m (498 sq. ft)

Shed area (approx.) 4.73 sq. m (51 sq. ft)

Store area (approx.) 0.77 sq. m (8 sq. ft)

Robertson Smith & Kempson Acton Sales
137 High Street, Acton,
London, W3 6LY
020 8896 3996
actonsales@robertsonsmithandkempson.co.uk

Energy Rating: C. We aim to make our particulars both accurate and reliable. However they are not guaranteed; nor do they form part of an offer or contract. If you require clarification on any points then please contact us, especially if you're traveling some distance to view. Please note that appliances and heating systems have not been tested and therefore no warranties can be given as to their good working order.