



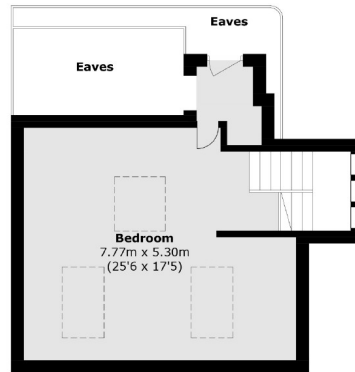
## Wolverton Gardens, W5

£1,250,000

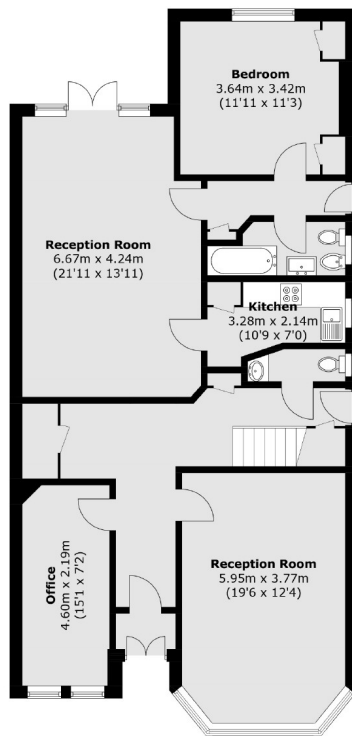
An imposing semi detached period property moments from Ealing Common. The property has almost 3000 sq.ft of accommodation and is in need of complete refurbishment. It offers huge potential and has previously had planning to be converted into five flats.

Wolverton Gardens is moments from Ealing Common station (District and Piccadilly Lines) and just over half a mile from Ealing Broadway for the Elizabeth Line.

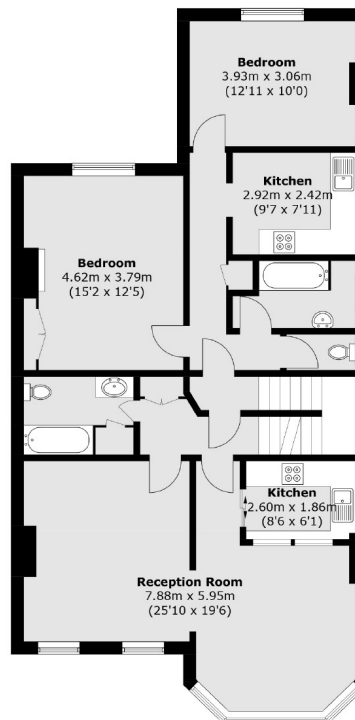
- Semi-Detached • Large Garden • Huge Potential •
- No Onward Chain • 2817 Sq.Ft • Close To Station •



**Second Floor**



**Ground Floor**



**First Floor**

Total area (approx.): 261.8 sq. m (2,817.9 sq. ft)  
(Excluding Eaves)

Robertson Smith & Kempson Acton Sales  
137 High Street, Acton,  
London, W3 6LY  
020 8896 3996  
actonsales@robertsonsmithandkempson.co.uk

Energy Rating: E. We aim to make our particulars both accurate and reliable. However they are not guaranteed; nor do they form part of an offer or contract. If you require clarification on any points then please contact us, especially if you're traveling some distance to view. Please note that appliances and heating systems have not been tested and therefore no warranties can be given as to their good working order.