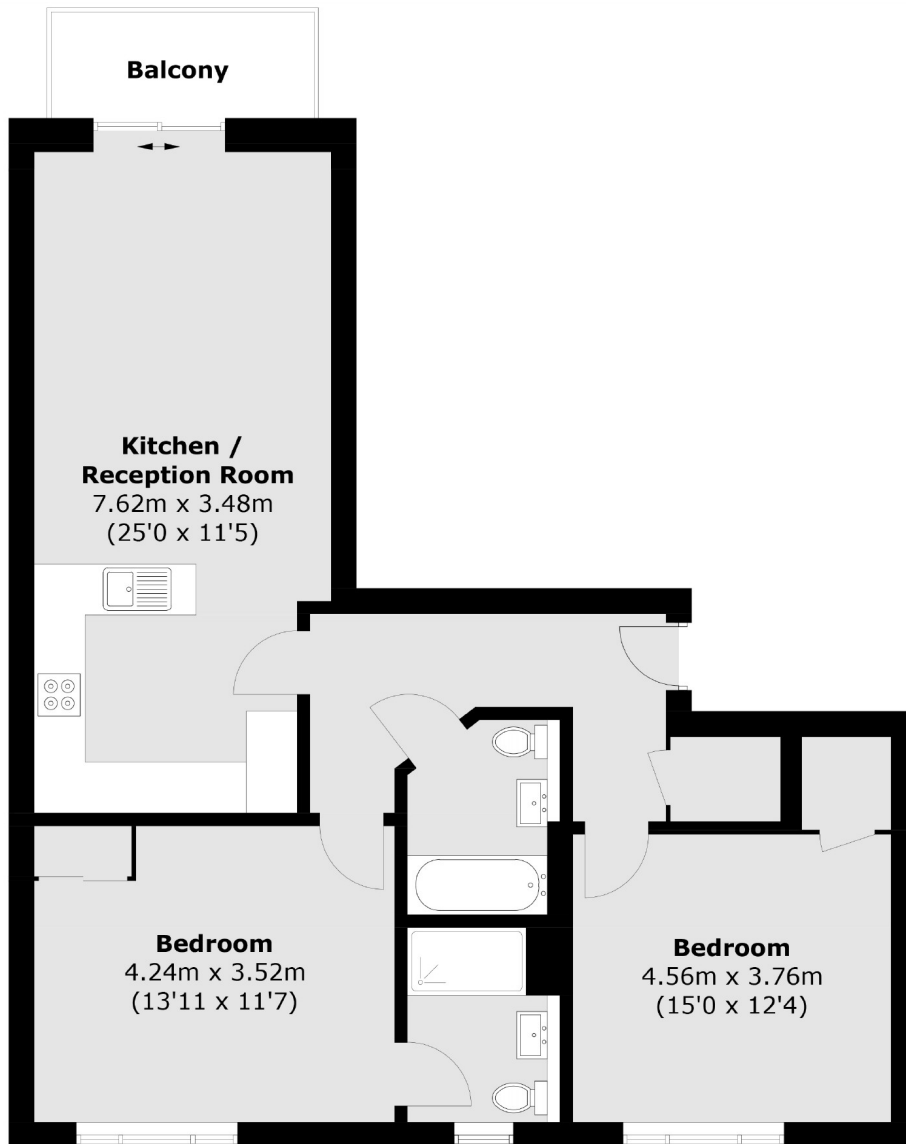


## Bromyard Avenue, W3

£400,000

A two double bedroom apartment in this prestigious gated development with 24 hours concierge. The property has a private balcony overlooking the internal courtyard, allocated parking and is offered with no onward chain.

Bromyard Avenue is on the borders of Shepherd's Bush and just over half a mile from East Acton and Acton Central stations providing excellent access into town.



Total area (approx.): 75.9 sq. m (817.0 sq. ft)  
Balcony area (approx.): 3.9 sq. m (42.0 sq. ft)

Robertson Smith & Kempson Acton Sales  
137 High Street, Acton,  
London, W3 6LY  
020 8896 3996  
[actonsales@robertsonsmithandkempson.co.uk](mailto:actonsales@robertsonsmithandkempson.co.uk)

Energy Rating: C. We aim to make our particulars both accurate and reliable. However they are not guaranteed; nor do they form part of an offer or contract. If you require clarification on any points then please contact us, especially if you're traveling some distance to view. Please note that appliances and heating systems have not been tested and therefore no warranties can be given as to their good working order.