

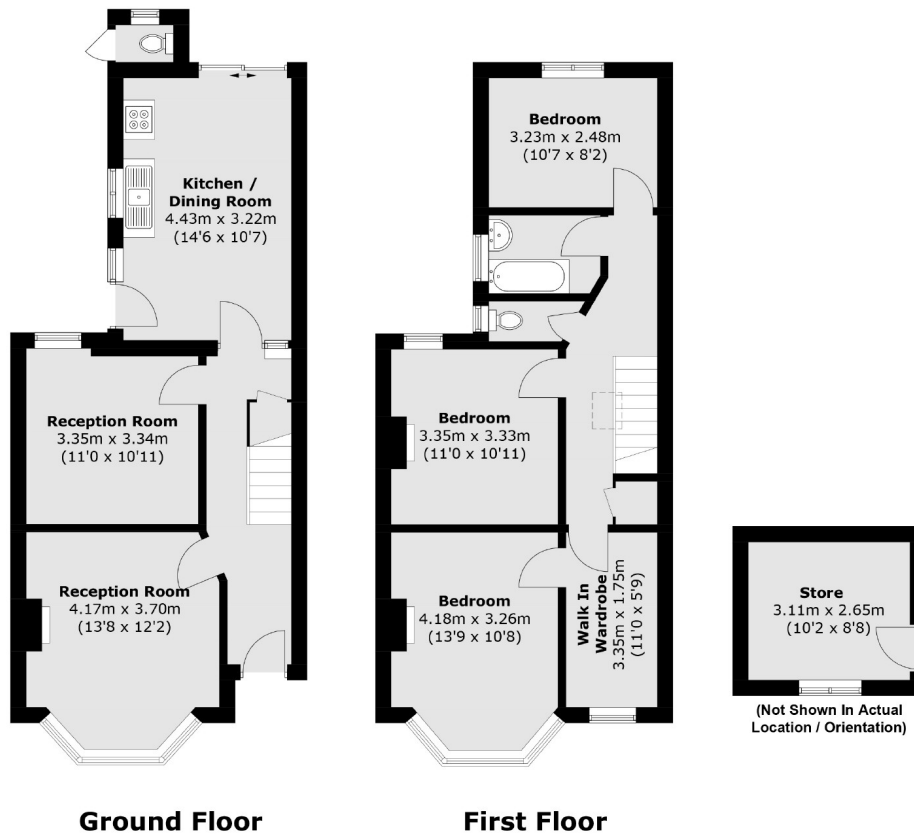


Larden Road, W3

£899,950

A semi-detached three bedroom family home on the borders of Chiswick and Shepherds Bush. The property is in need of modernisation throughout and offer potential to extend both on the ground floor and into the loft subject to the usual consents.

Larden Road is just over half a mile from both Acton Central (overground) and Turnham Green (District line) stations both providing excellent access into town.



Total area (approx.): 107.3 sq. m (1,155.0 sq. ft)
Store area (approx.): 8.3 sq. m (89.3 sq. ft)

Robertson Smith & Kempson Acton Sales
137 High Street, Acton,
London, W3 6LY
020 8896 3996
actonsales@robertsonsmithandkempson.co.uk

Energy Rating: G. We aim to make our particulars both accurate and reliable. However they are not guaranteed; nor do they form part of an offer or contract. If you require clarification on any points then please contact us, especially if you're traveling some distance to view. Please note that appliances and heating systems have not been tested and therefore no warranties can be given as to their good working order.