



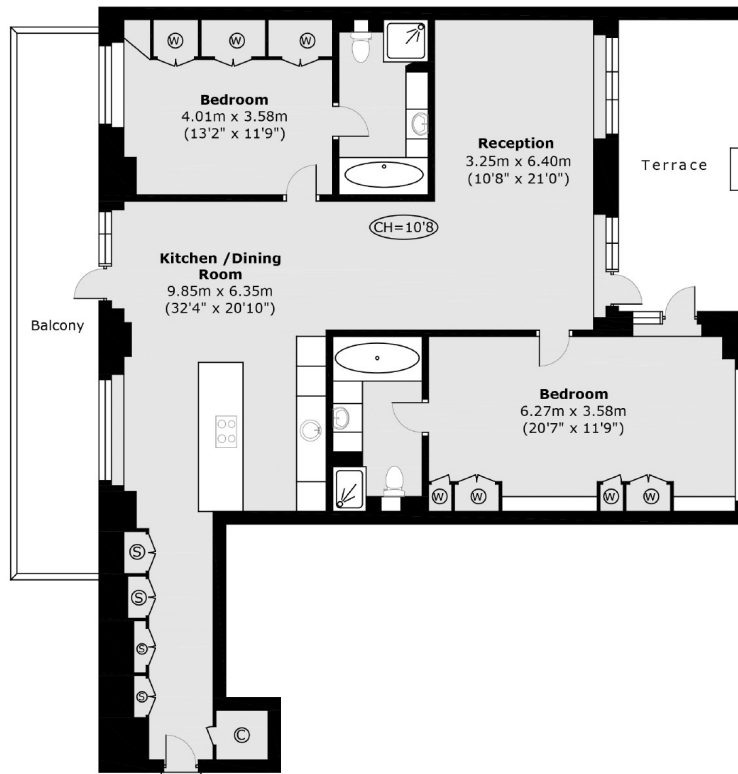
## Warple Way, W3

£789,950

A beautifully designed, two-bedroom loft-style apartment in an Art Deco factory conversion. With over 1,300 sq.ft of bright, spacious living, this Z-shaped layout offers the perfect balance of open-plan living and distinct spaces between the kitchen/dining area and the lounge.

Two lovely parks are just a short walk away, offering plenty of green space for leisure. Chiswick is close by, with several buses

## First Floor



Main area: Approx. 123.5 sq. meters (1,329.7 sq. feet )  
Plus balcony: approx. 18.5 sq meters (199.4 sq feet)  
Plus terrace: approx. 17.4 sq meters (187.6 sq feet)

Robertson Smith & Kempson Acton Sales  
137 High Street, Acton,  
London, W3 6LY  
020 8896 3996  
[actonsales@robertsonsmithandkempson.co.uk](mailto:actonsales@robertsonsmithandkempson.co.uk)

Energy Rating: B. We aim to make our particulars both accurate and reliable. However they are not guaranteed; nor do they form part of an offer or contract. If you require clarification on any points then please contact us, especially if you're traveling some distance to view. Please note that appliances and heating systems have not been tested and therefore no warranties can be given as to their good working order.