



## Maldon Road, W3

£1,395,000

A five bedroom family home located in the heart of Poet's Corner. This well maintained period property offers in excess of 2100 sq.ft of accommodation and has a basement providing ample storage space.





This mid-terrace Edwardian house consists of a bay fronted double reception room with original wood flooring throughout and feature fireplace. The rear has been extended to create a spacious eat-in kitchen with doors opening out to the large rear garden.

The first floor comprises of three double bedrooms and a bathroom. On the top floor are two further double bedrooms one with an en suite shower room and a separate large family bathroom.

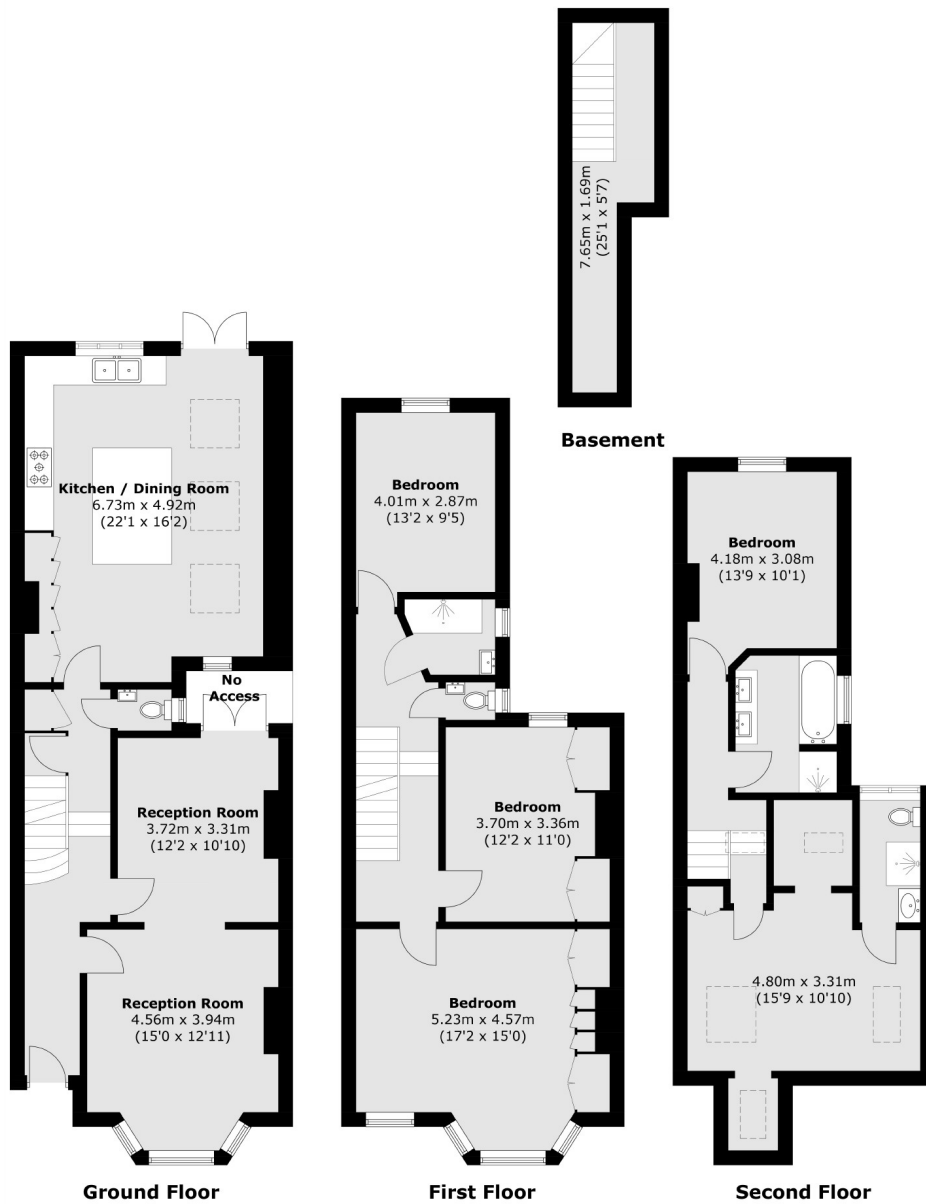
There are a number of good local schools in the area including Derwentwater Primary and Ark Byron Academy.

Maldon Road is located within half a mile of the shops and amenities of Churchfield Road, Acton Central station and the Elizabeth line station, Acton Main Line.

- Five Bedrooms • Three Bathrooms • Large Garden •
- Basement • Poets Corner • Edwardian •







Total area (approx.): 198.2 sq. m (2,133.4 sq. ft)  
(Including Basement)

Robertson Smith & Kempson Ealing Sales  
1 The Broadway, London,  
W5 2NT  
020 8840 7677  
ealingsales@robertsonsmithandkempson.co.uk

Energy Rating: E. We aim to make our particulars both accurate and reliable. However they are not guaranteed; nor do they form part of an offer or contract. If you require clarification on any points then please contact us, especially if you're traveling some distance to view. Please note that appliances and heating systems have not been tested and therefore no warranties can be given as to their good working order.