

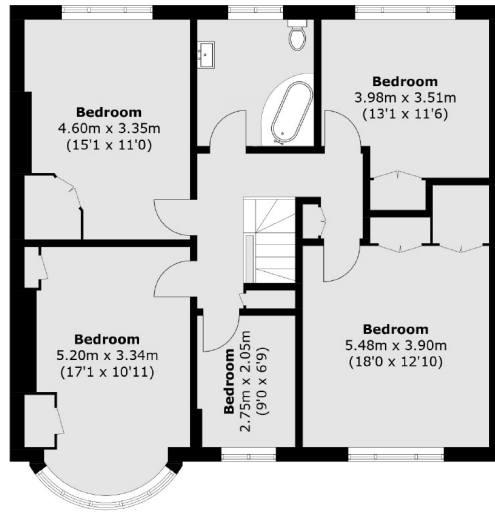


Friary Road, W3

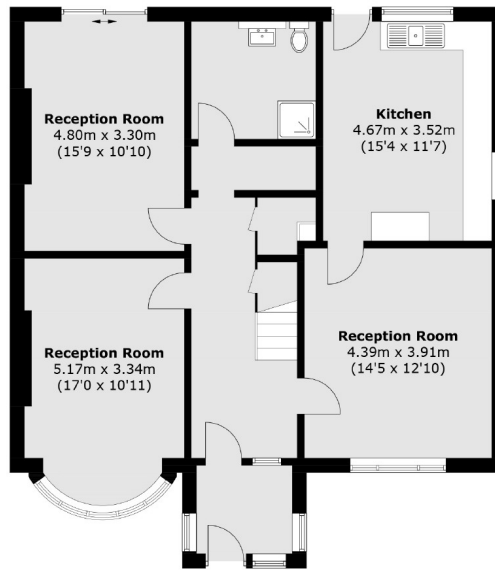
£1,100,000

A large five bedroom family home on a corner plot with an impressive wrap-around landscaped garden. The property offers almost 2000 sq.ft of accommodation with plenty of potential to extend on the ground floor and into the loft (STPP).

Friary Road is moments from Acton Main Line for the Elizabeth Line and is just over half a mile from the shops and amenities of Churchfield Road.



First Floor



Ground Floor

Total area (approx.): 184.5 sq. m (1,985.9 sq. ft)

Robertson Smith & Kempson Acton Sales
137 High Street, Acton,
London, W3 6LY
020 8896 3996
actonsales@robertsonsmithandkempson.co.uk

Energy Rating: D. We aim to make our particulars both accurate and reliable. However they are not guaranteed; nor do they form part of an offer or contract. If you require clarification on any points then please contact us, especially if you're traveling some distance to view. Please note that appliances and heating systems have not been tested and therefore no warranties can be given as to their good working order.