



Davenant Way, W3

£865 pw (£3750.00 pcm)

A modern three bedroom family home located on the borders of Chiswick. The property has been finished to the highest standard throughout, has a terrace, private garden and allocated off-street parking.



This impressive townhouse consists of a spacious open plan kitchen/ living room with under floor heating and a door out to the back garden and a downstairs WC. To the first floor are two double bedrooms and a modern family bathroom.

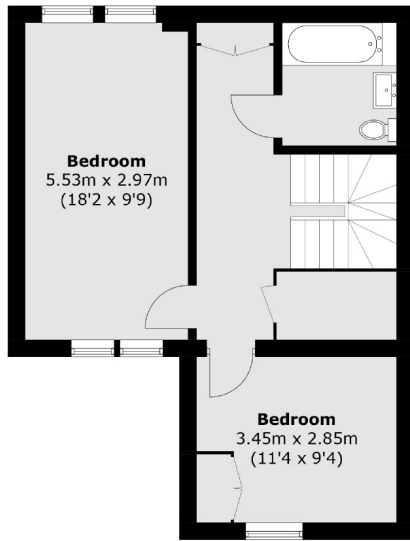
On the top floor is the principal bedroom with en suite bathroom and large terrace.

The property is ideally located just a short walk from both Acton and Chiswick town centres.

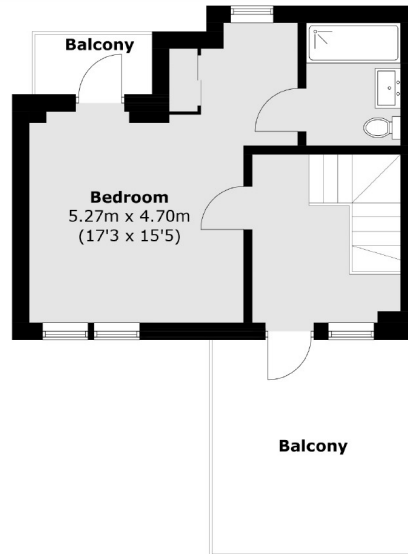
Davenant Way is ideally located within half a mile of South Acton and Acton Town stations as well as the shops and amenities of Churchfield Road.

- Three Bedrooms • Two Bathrooms • Off-Street Parking •
 - Private Garden • Terrace • Underfloor Heating •
-

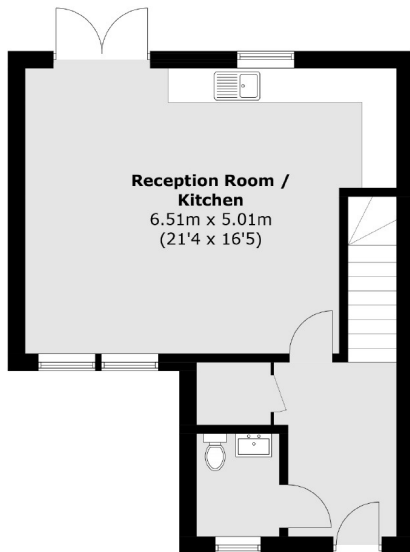




First Floor



Second Floor



Ground Floor

Total area (approx.): 121.5 sq. m (1307.6 sq. ft)
Balcony Area : 15.5 sq. m (166.8 sq. ft)

Robertson Smith & Kempson Acton
137 High Street, Acton, London,
W3 6LY
020 8896 3967
actonlettings@robertsonsmithandkempson.co.uk

Energy Rating: B. We aim to make our particulars both accurate and reliable. However they are not guaranteed; nor do they form part of an offer or contract. If you require clarification on any points then please contact us, especially if you're traveling some distance to view. Please note that appliances and heating systems have not been tested and therefore no warranties can be given as to their good working order.