

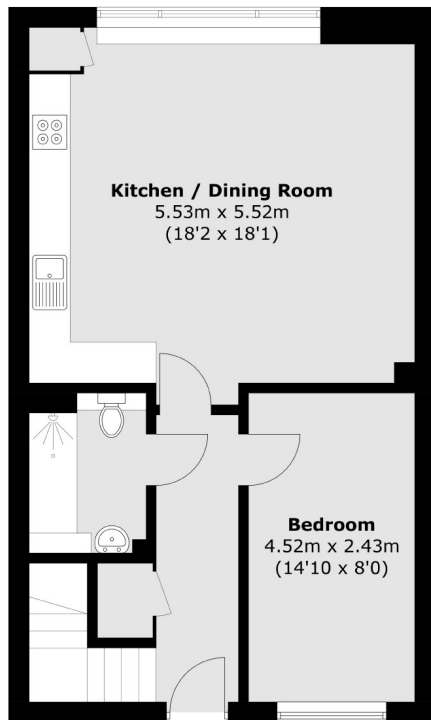


Cowley Road, W3

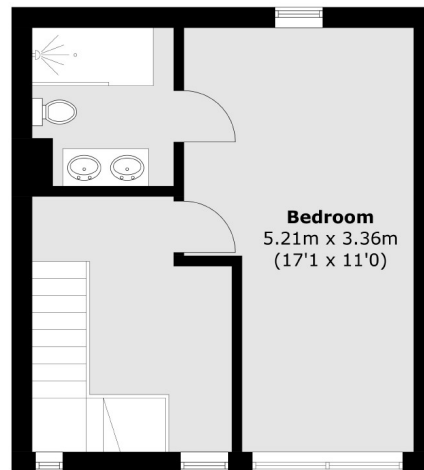
£450,000

A unique split-level two bedroom loft style apartment with floor to ceiling windows which flood the reception room and kitchen with natural light. The property offers almost 1000 sq.ft of accommodation and is offered with no onward chain.

Located between Acton and Shepherds Bush, Issigonis House is conveniently located for a range of transport and amenities with Acton Central, East Acton, Stamford Brook and Shepherds Bush



Fourth Floor



Fifth Floor

Total area (approx.): 90.1 sq. m (969.8 sq. ft)

Robertson Smith & Kempson Acton Sales
137 High Street, Acton,
London, W3 6LY
020 8896 3996
actonsales@robertsonsmithandkempson.co.uk

Energy Rating: B. We aim to make our particulars both accurate and reliable. However they are not guaranteed; nor do they form part of an offer or contract. If you require clarification on any points then please contact us, especially if you're traveling some distance to view. Please note that appliances and heating systems have not been tested and therefore no warranties can be given as to their good working order.