

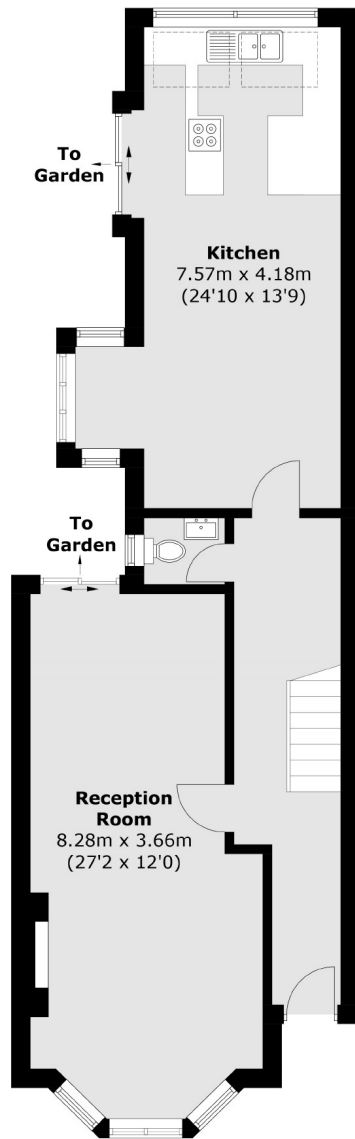


## Birkbeck Avenue, W3

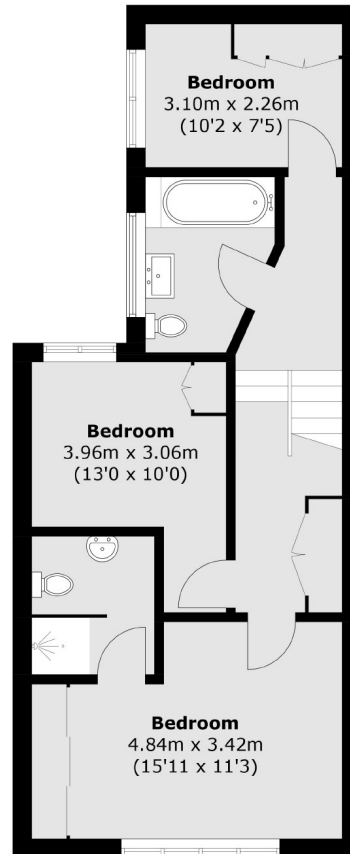
£899,950

A detached three bedroom family home moments from the Elizabeth Line station, Acton Main Line. The property offers huge potential to extend both on the ground floor and into the loft subject to the usual consents and is offered with no onward chain.

Birkbeck Avenue is within 500 metres of Acton Main Line and less than half a mile from Acton Central and the shops and amenities of Churchfield Road.



**Ground Floor**



**First Floor**

Total area (approx.): 120.6 sq. m (1,298.1 sq. ft)

Robertson Smith & Kempson Acton Sales  
137 High Street, Acton,  
London, W3 6LY  
020 8896 3996  
[actonsales@robertsonsmithandkempson.co.uk](mailto:actonsales@robertsonsmithandkempson.co.uk)

Energy Rating: D. We aim to make our particulars both accurate and reliable. However they are not guaranteed; nor do they form part of an offer or contract. If you require clarification on any points then please contact us, especially if you're traveling some distance to view. Please note that appliances and heating systems have not been tested and therefore no warranties can be given as to their good working order.