



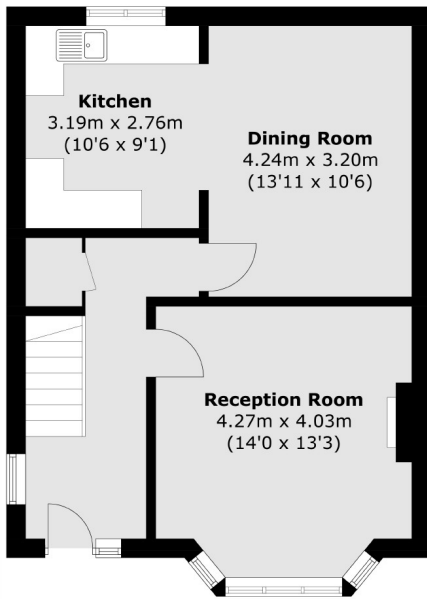
Kathleen Avenue, W3

£799,950

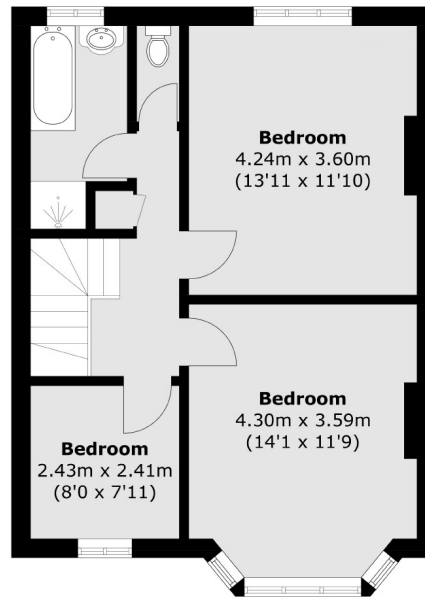
A semi-detached three bedroom family home with a garage. The property has a large wrap around garden that offers huge potential to extend both on the ground floor and into the loft subject to all the usual consents.

Kathleen Avenue is within half a mile of both Acton Main Line (Elizabeth Line) and North Acton (Central Line) both of which provide excellent access into town.

- Three Bedrooms • Semi-Detached • Garage •
- Large Garden • Potential To Extend • No Onward Chain •



Ground Floor



First Floor

Total area (approx.): 101.2 sq. m (1,089.3 sq. ft)

Robertson Smith & Kempson Acton Sales
137 High Street, Acton,
London, W3 6LY
020 8896 3996
actonsales@robertsonsmithandkempson.co.uk

Energy Rating: D. We aim to make our particulars both accurate and reliable. However they are not guaranteed; nor do they form part of an offer or contract. If you require clarification on any points then please contact us, especially if you're traveling some distance to view. Please note that appliances and heating systems have not been tested and therefore no warranties can be given as to their good working order.