

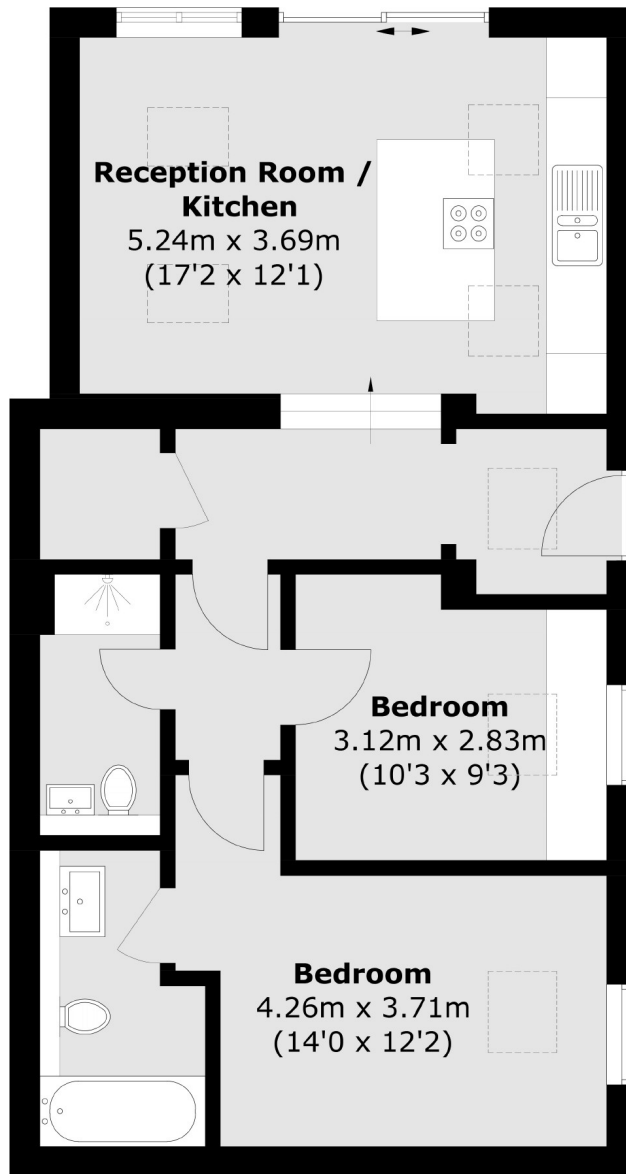


## Buxton Gardens, W3

£575,000

A ground floor two bedroom, two bathroom period conversion apartment with private garden. The property will come with a share of the freehold, the option to get a parking permit and has no onward chain.

Buxton Gardens is in the heart of Acton and only half a mile from the new Elizabeth line station Acton Main Line as well as the shops and amenities of Churchfield Road.



Total area (approx.): 61.3 sq. m (659.8 sq. ft)

Robertson Smith & Kempson Acton Sales  
137 High Street, Acton,  
London, W3 6LY  
020 8896 3996  
[actonsales@robertsonsmithandkempson.co.uk](mailto:actonsales@robertsonsmithandkempson.co.uk)

Energy Rating: C. We aim to make our particulars both accurate and reliable. However they are not guaranteed; nor do they form part of an offer or contract. If you require clarification on any points then please contact us, especially if you're traveling some distance to view. Please note that appliances and heating systems have not been tested and therefore no warranties can be given as to their good working order.