

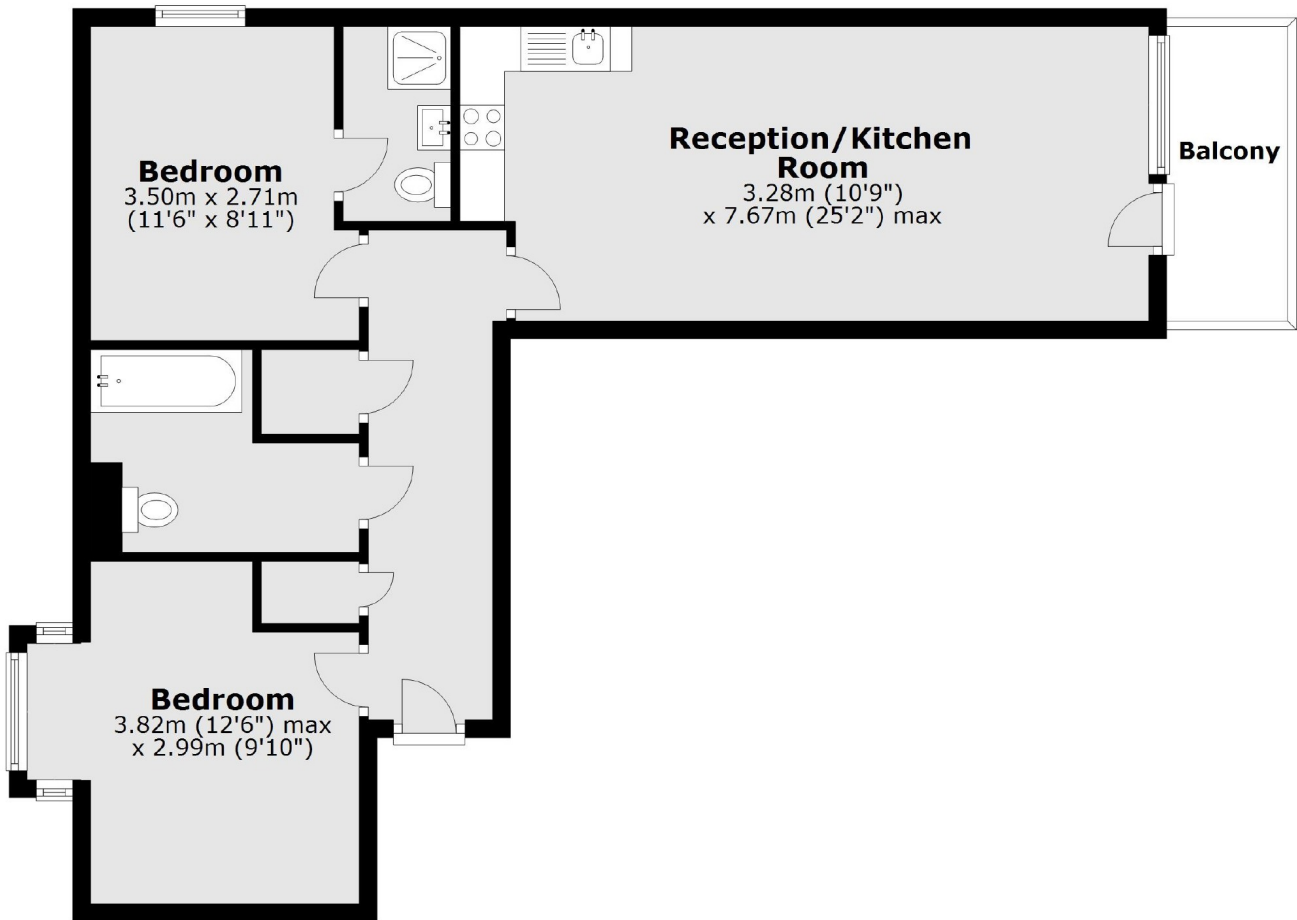


Rosemont Road, W3

£525,000

A modern two bedroom apartment located in the heart of Acton opposite Springfield Gardens. The property comes with a private balcony with views over the park, allocated underground parking and is offered with no onward chain.

Rosemont Road is located within half a mile of both Acton Central (Overground) and Acton Mainline (Elizabeth Line) providing excellent access into town.



Main area: Approx. 65.7 sq. metres (707.5 sq. feet)
Plus balconies, approx. 4.7 sq. metres (51.1 sq. feet)

Robertson Smith & Kempson Acton Sales
137 High Street, Acton,
London, W3 6LY
020 8896 3996
actonsales@robertsonsmithandkempson.co.uk

Energy Rating: B. We aim to make our particulars both accurate and reliable. However they are not guaranteed; nor do they form part of an offer or contract. If you require clarification on any points then please contact us, especially if you're traveling some distance to view. Please note that appliances and heating systems have not been tested and therefore no warranties can be given as to their good working order.