

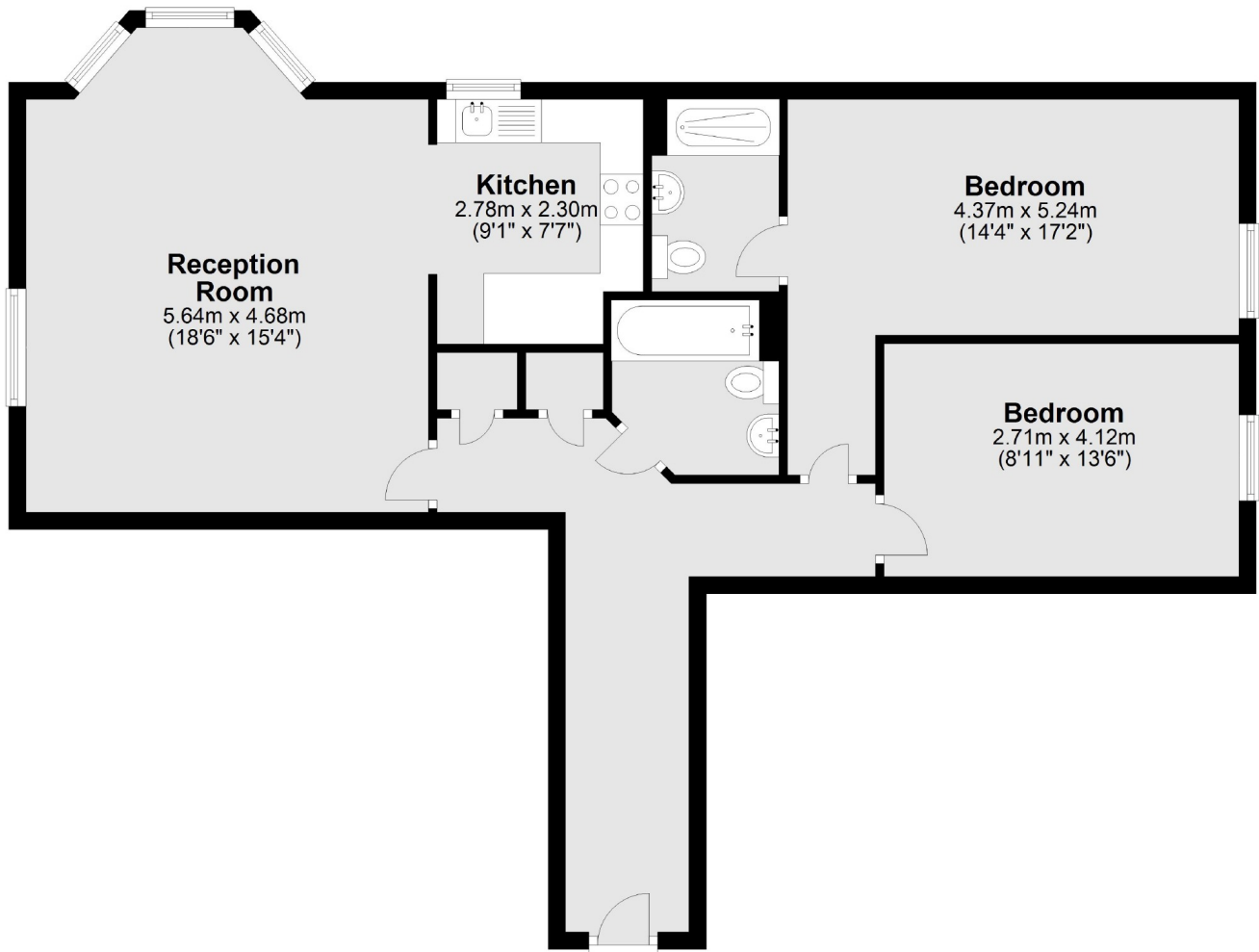


Boddington Gardens, W3

£531 pw (£2300.00 pcm)

Located in a small purpose built development, this spacious two double bedroom flat offers excellent living space combined with fantastic links to the local transport network. Other benefits include an allocated parking space and bike storage.

Situated only 0.4 mile away from Acton Town underground station and 0.8 mile from International School of London on Gunnersbury Avenue.



Total area: approx. 81.1 sq. metres (873.4 sq. feet)

Robertson Smith & Kempson Acton Lettings
137 High Street, Acton, London,
W3 6LY
020 8896 3967
actonlettings@robertsonsmithandkempson.co.uk

Energy Rating: C. We aim to make our particulars both accurate and reliable. However they are not guaranteed; nor do they form part of an offer or contract. If you require clarification on any points then please contact us, especially if you're traveling some distance to view. Please note that appliances and heating systems have not been tested and therefore no warranties can be given as to their good working order.