



Perryn Road, W3

£2,250,000

An imposing double fronted detached family home on one of Acton's premier roads. The property offers in excess of 3500 sq.ft of accommodation and has a large west facing garden.



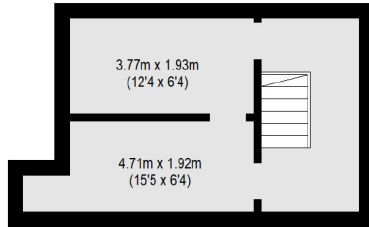
This rarely available period property consists of a bay fronted double reception with wood flooring and a wood burner, a second reception room/study and large eat-in kitchen/dining room with doors leading out to the mature west facing garden. The property also benefits from off-street parking at the front.

To the first floor is the principal bedroom with walk-in wardrobe and en suite bathroom, two further double bedrooms and a family bathroom. There are three further bedrooms and a bathroom on the top floor.

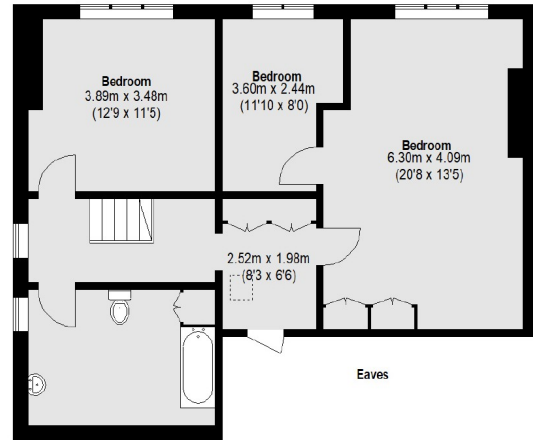
Perryn Road is moments from the shops and amenities of Churchfield Road, Acton Central station and Acton Park. The new Elizabeth line station, Acton Mainline is also only half a mile away.

- Six Bedrooms • Three Bathrooms • Detached •
 - West Facing Garden • Off-Street • Double Fronted •
-

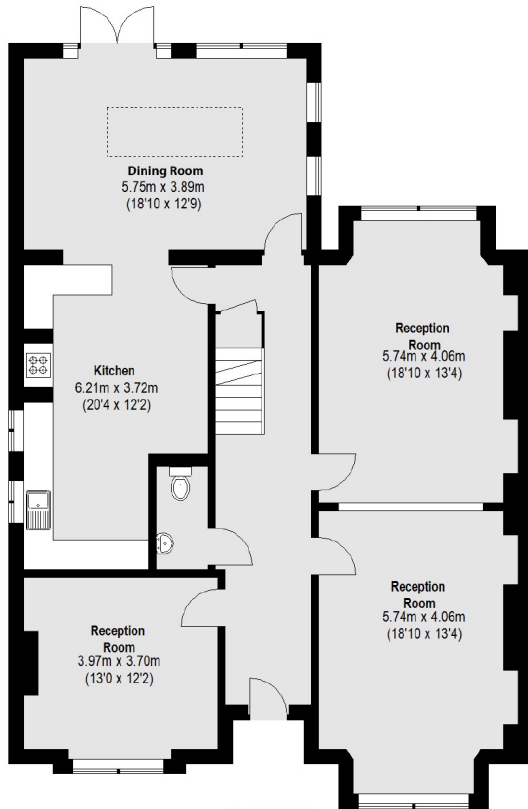




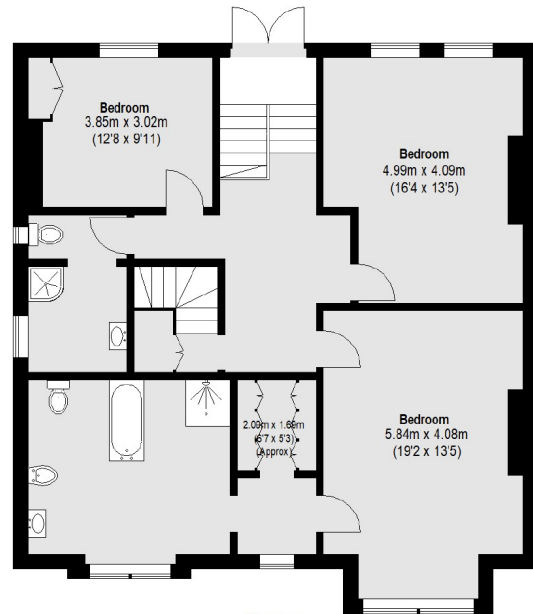
Basement



Second Floor



Ground Floor



First Floor

Total area (approx.): 325.94 sq. m (3508 Sq. ft)
(Excluding Eaves)

Robertson Smith & Kempson Acton Sales
137 High Street, Acton,
London, W3 6LY
020 8896 3996
actonsales@robertsonsmithandkempson.co.uk

Energy Rating: D. We aim to make our particulars both accurate and reliable. However they are not guaranteed; nor do they form part of an offer or contract. If you require clarification on any points then please contact us, especially if you're traveling some distance to view. Please note that appliances and heating systems have not been tested and therefore no warranties can be given as to their good working order.