

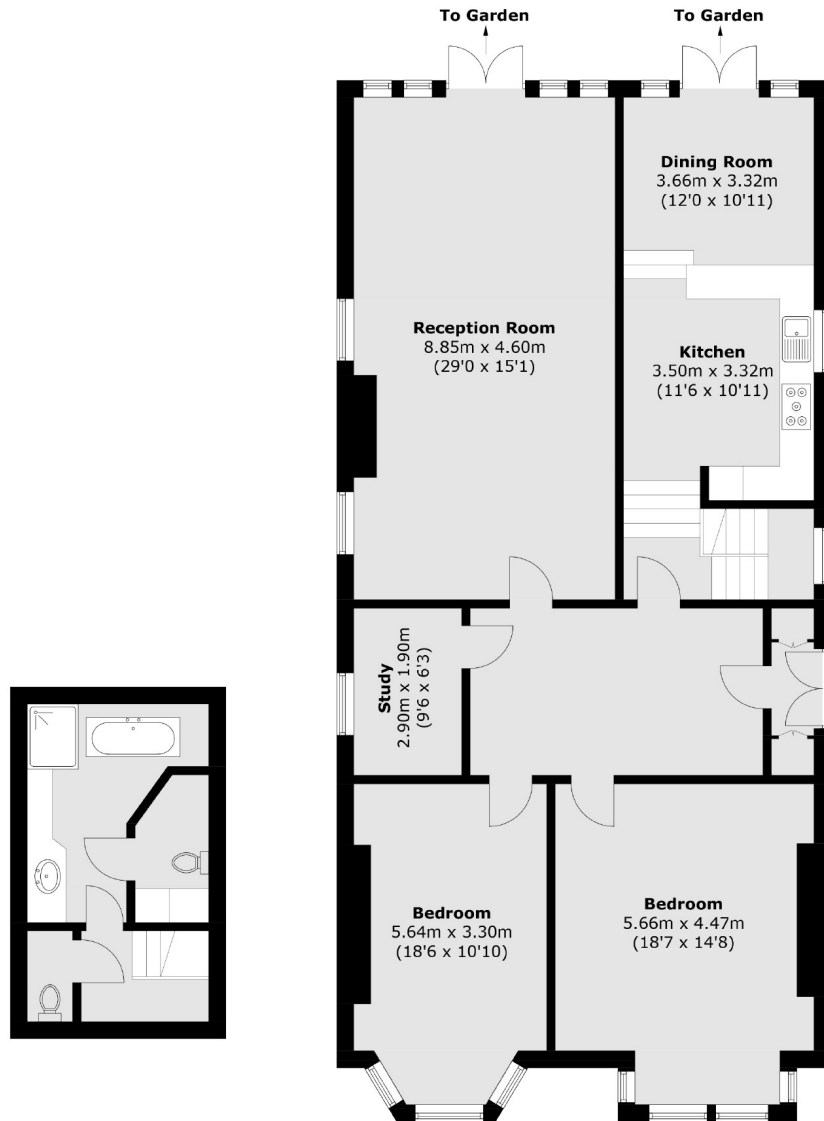


Twyford Avenue, W3

£875,000

A spacious three bedroom garden flat in this imposing detached period property on the corner of Twyford Avenue and Stanway Gardens. The property offers in excess of 1700 sq.ft of accommodation with private front and rear gardens.

Located opposite the Twyford Avenue Sports Ground and within half a mile of Ealing Common and Acton stations offering excellent access into town.



Total area (approx.): 158.9 sq. m (1,710.4 sq. ft)
(Including Basement)

Robertson Smith & Kempson Acton Sales
137 High Street, Acton,
London, W3 6LY
020 8896 3996
actonsales@robertsonsmithandkempson.co.uk

Energy Rating: D. We aim to make our particulars both accurate and reliable. However they are not guaranteed; nor do they form part of an offer or contract. If you require clarification on any points then please contact us, especially if you're traveling some distance to view. Please note that appliances and heating systems have not been tested and therefore no warranties can be given as to their good working order.