

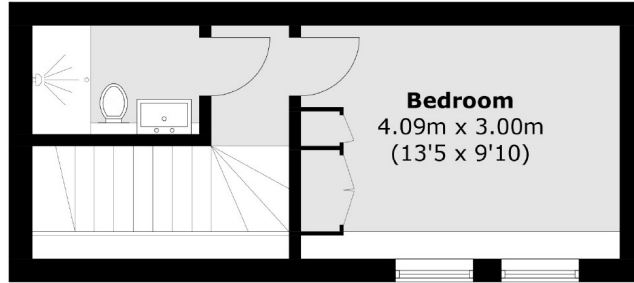


Oldham Terrace, W3

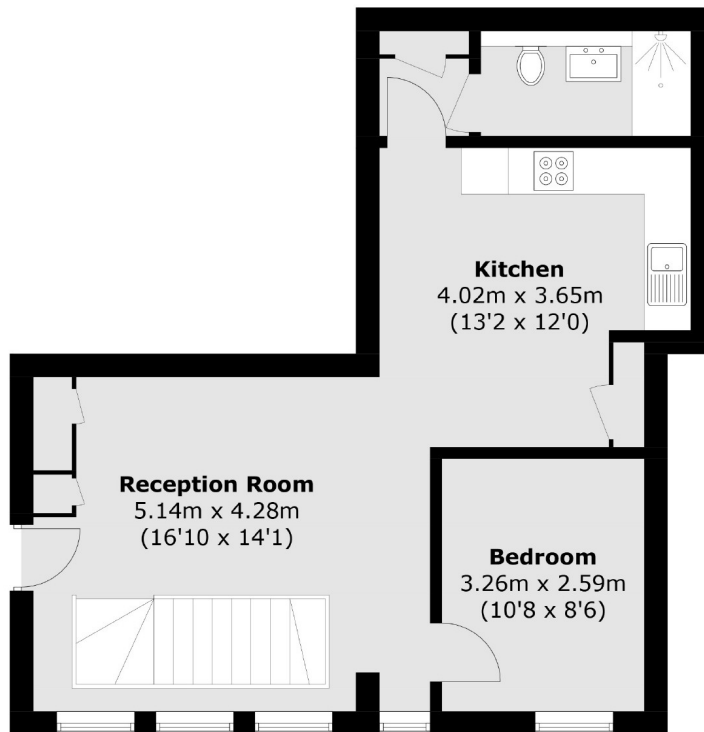
£539,950

A modern split-level two bedroom apartment in this recently converted 1920s building in the heart of Acton. The property has been finished to the highest standard and has two bathrooms, bike storage and access to a communal roof terrace.

Oldham Terrace is located just off the High Street and within half a mile of South Acton, Acton Central and Acton Town stations offering excellent access into town.



First Floor



Ground Floor

Total area (approx.): 73.9 sq. m (795.5 sq. ft)

Robertson Smith & Kempson Acton Sales
137 High Street, Acton,
London, W3 6LY
020 8896 3996
actonsales@robertsonsmithandkempson.co.uk

Energy Rating: C. We aim to make our particulars both accurate and reliable. However they are not guaranteed; nor do they form part of an offer or contract. If you require clarification on any points then please contact us, especially if you're traveling some distance to view. Please note that appliances and heating systems have not been tested and therefore no warranties can be given as to their good working order.