

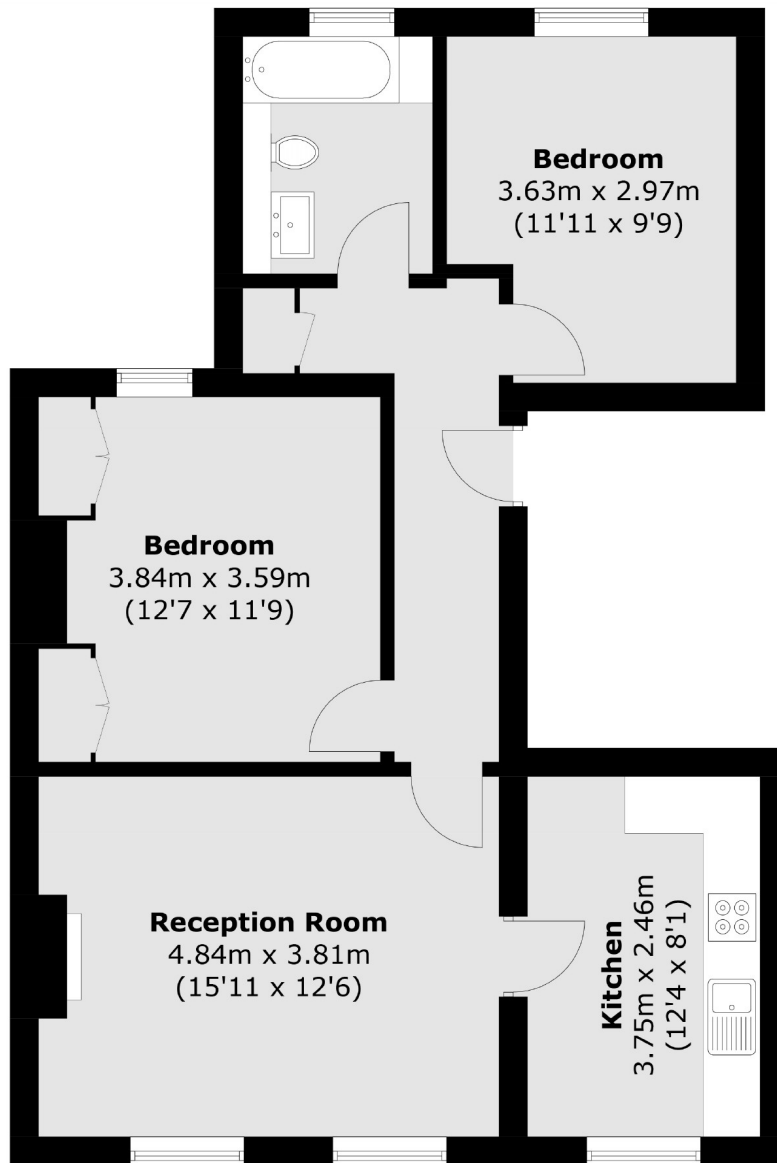


Gloucester Road, W3

£465,000

A first floor two bedroom period conversion apartment located in the heart of Acton. The property is in excellent condition throughout having been refurbished by the current owners, has a share of the freehold and no onward chain.

Acton Central (Overground), Acton Town (District and Piccadilly lines) and Acton Main Line (Elizabeth line) stations are within a mile and the Ark primary schools (Priory & Byron) are close by.



First Floor

Total area (approx.): 67.8 sq. m (729.8 sq. ft)

Robertson Smith & Kempson Acton Sales
137 High Street, Acton,
London, W3 6LY
020 8896 3996
actonsales@robertsonsmithandkempson.co.uk

Energy Rating: C. We aim to make our particulars both accurate and reliable. However they are not guaranteed; nor do they form part of an offer or contract. If you require clarification on any points then please contact us, especially if you're traveling some distance to view. Please note that appliances and heating systems have not been tested and therefore no warranties can be given as to their good working order.