

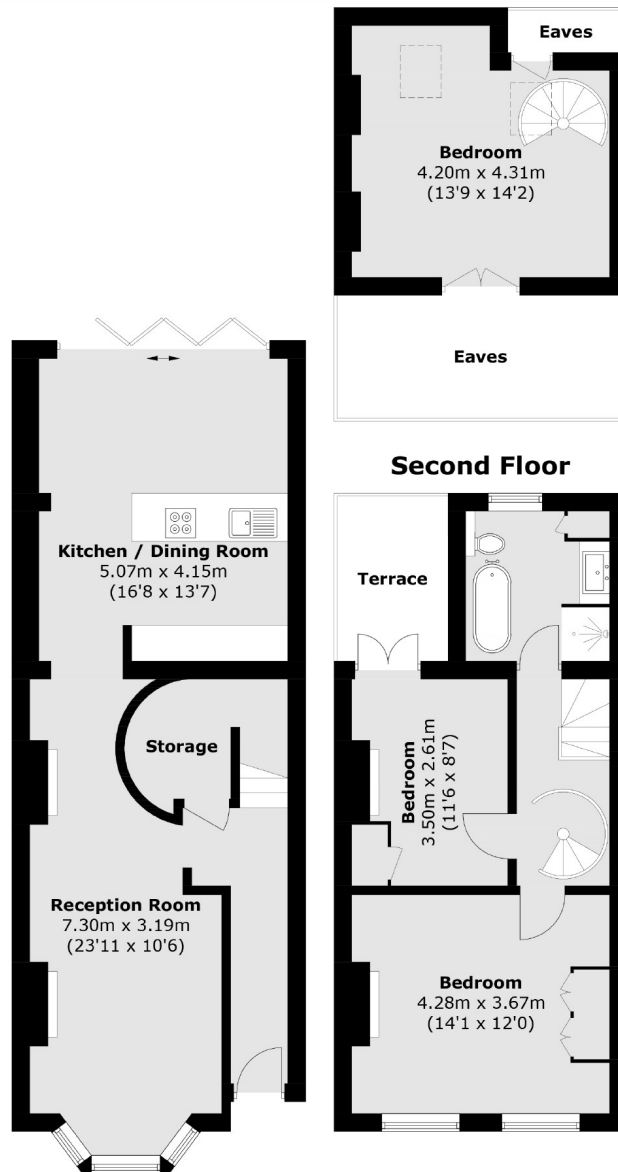


Milton Road, W3

£750,000

A three bedroom Victorian family home located in the heart of the popular Poets Corner area of Acton. The property offers almost 1200 sq.ft of accommodation, has a west facing garden and is offered with no onward chain.

Milton Road is moments from Acton Central station and the shops and amenities of Churchfield Road. The new Elizabeth line station, Acton Main Line, is also just over half a mile away.



Ground Floor

First Floor

Total area (approx.): 109.7 sq. m (1,180.8 sq. ft)
(Excluding Eaves)

Terrace (approx.): 5.1 sq. m (54.9 sq. ft)

Robertson Smith & Kempson Acton Sales
137 High Street, Acton,
London, W3 6LY
020 8896 3996
actonsales@robertsonsmithandkempson.co.uk

Energy Rating: D. We aim to make our particulars both accurate and reliable. However they are not guaranteed; nor do they form part of an offer or contract. If you require clarification on any points then please contact us, especially if you're traveling some distance to view. Please note that appliances and heating systems have not been tested and therefore no warranties can be given as to their good working order.