



Gunnersbury Crescent, W3

£1,350,000

A newly refurbished and extended five bedroom family home. The property has been finished to the highest standard throughout, offers in excess of 2000 sq.ft of accommodation and has off-street parking.



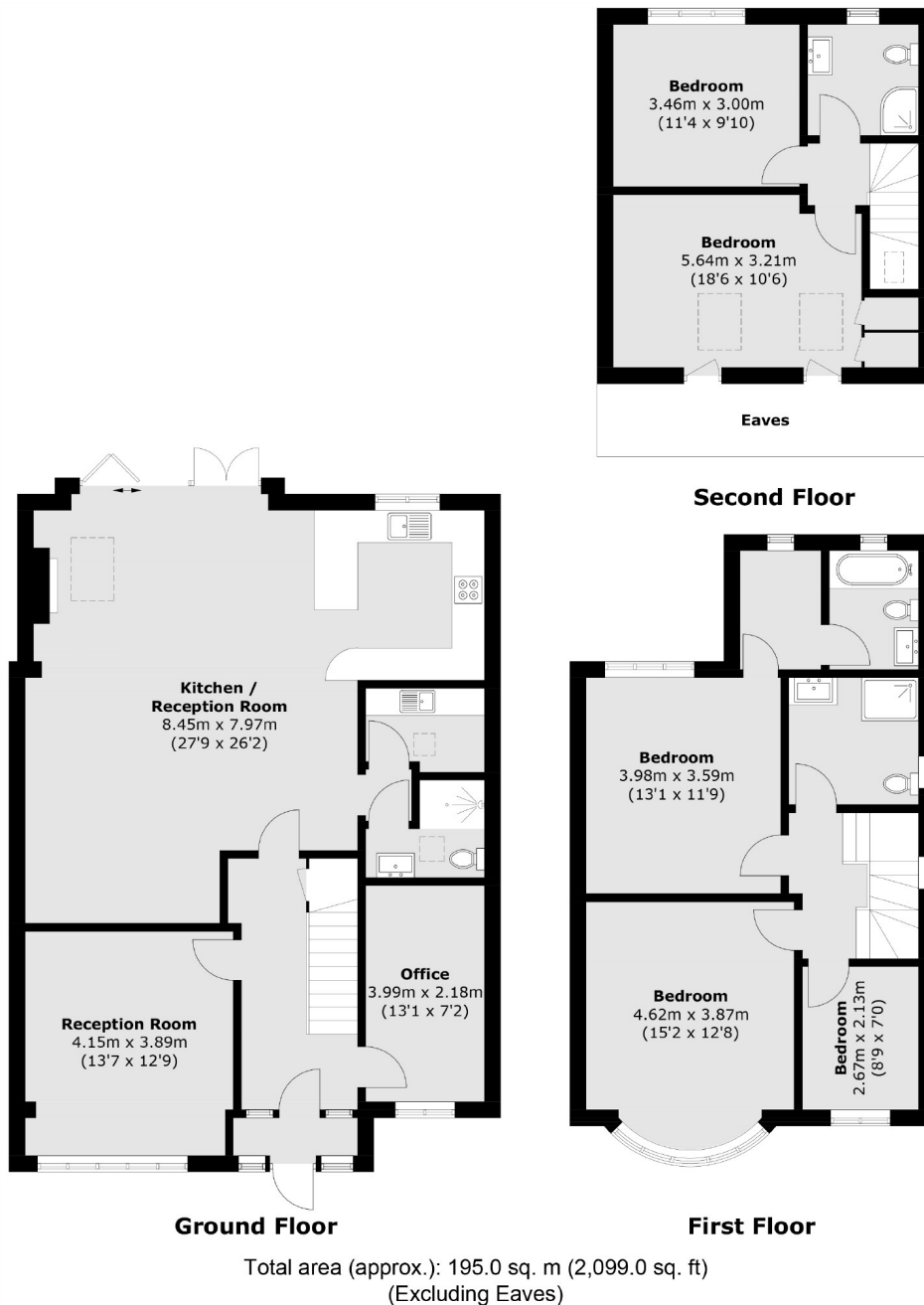
This immaculate home consists of a front reception room, a study, downstairs shower and utility room and the rear has been extended to create an extremely spacious kitchen and reception room with bi-folding doors out to a large garden. There is also under floor heating throughout on the ground floor.

On the first floor there is the principal bedroom with dressing room and en suite bathroom, two further bedrooms and a modern family bathroom. The loft has been converted to create two further bedrooms and a shower room.

Gunnersbury Crescent is within 200 metres of the green open space of Gunnersbury Park and Acton Town station provides easy access into London.

- Five Bedrooms • Four Bathrooms • Off-Street Parking •
 - No Onward Chain • Immaculate Finish • Large Garden •
-





Robertson Smith & Kempson Acton Sales
137 High Street, Acton,
London, W3 6LY
020 8896 3996
actonsales@robertsonsmithandkempson.co.uk

Energy Rating: F. We aim to make our particulars both accurate and reliable. However they are not guaranteed; nor do they form part of an offer or contract. If you require clarification on any points then please contact us, especially if you're traveling some distance to view. Please note that appliances and heating systems have not been tested and therefore no warranties can be given as to their good working order.