



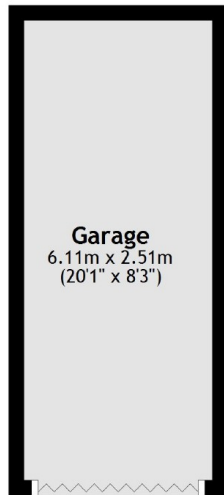
Bloomsbury Close, W5

£325,000

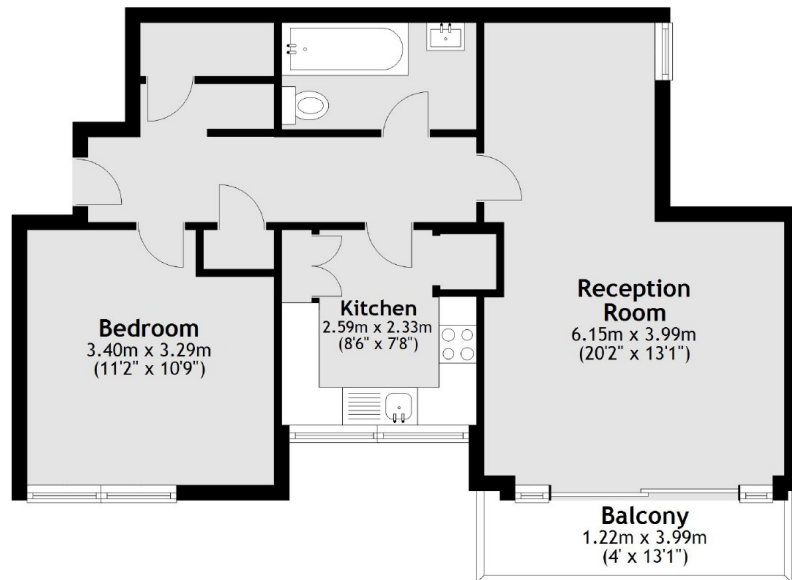
A sixth floor one bedroom apartment in this purpose built gated development. The property has a balcony offering stunning views over London, a garage and is offered with no onward chain.

Bloomsbury Close is ideally located within 500 metres of both North Ealing and Ealing Common stations providing excellent access into town.

Ground Floor



Sixth Floor



Main area: Approx. 51.8 sq. metres (557.2 sq. feet)

Plus garages, approx. 15.3 sq. metres (165.0 sq. feet)
Plus balconies, approx. 4.4 sq. metres (47.6 sq. feet)

Robertson Smith & Kempson Acton Sales
137 High Street, Acton,
London, W3 6LY
020 8896 3996
actonsales@robertsonsmithandkempson.co.uk

Energy Rating: D. We aim to make our particulars both accurate and reliable. However they are not guaranteed; nor do they form part of an offer or contract. If you require clarification on any points then please contact us, especially if you're traveling some distance to view. Please note that appliances and heating systems have not been tested and therefore no warranties can be given as to their good working order.