



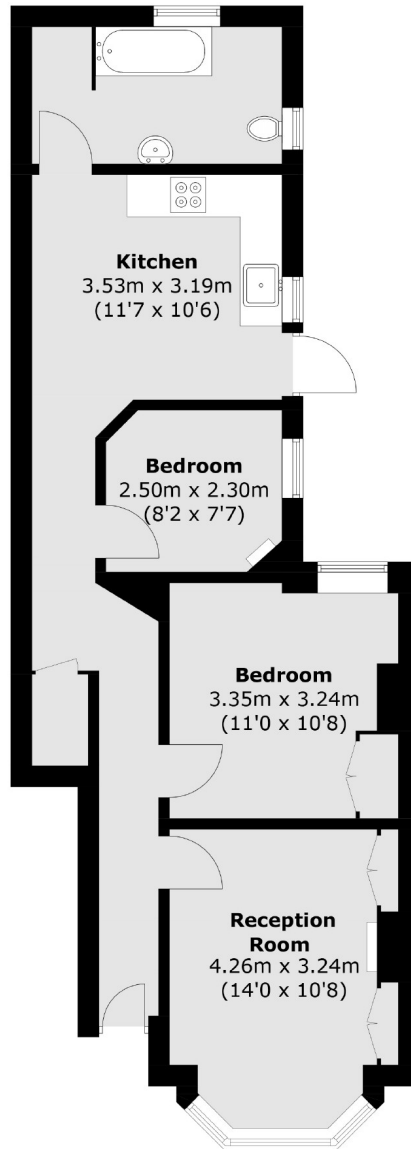
Valetta Road, W3

£550,000

A recently refurbished two bedroom period conversion garden flat. The property has been finished to the highest standard throughout and is ideally located on the borders of both Chiswick and Shepherds Bush.

Valetta Road is within half a mile of Acton Central station (Overground), Acton Park and the shops and amenities of Churchfield Road.

- Two Bedrooms • Modern Bathroom • Recently Refurbished •
- Private Garden • Chiswick Borders • Period Conversion •



Total area (approx.): 61 sq. m (656.6 sq. ft)

Robertson Smith & Kempson Acton Sales
137 High Street, Acton,
London, W3 6LY
020 8896 3996
actonsales@robertsonsmithandkempson.co.uk

Energy Rating: C. We aim to make our particulars both accurate and reliable. However they are not guaranteed; nor do they form part of an offer or contract. If you require clarification on any points then please contact us, especially if you're traveling some distance to view. Please note that appliances and heating systems have not been tested and therefore no warranties can be given as to their good working order.