

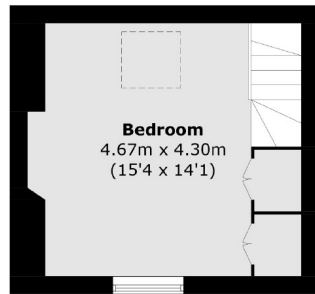


Mansell Road, W3

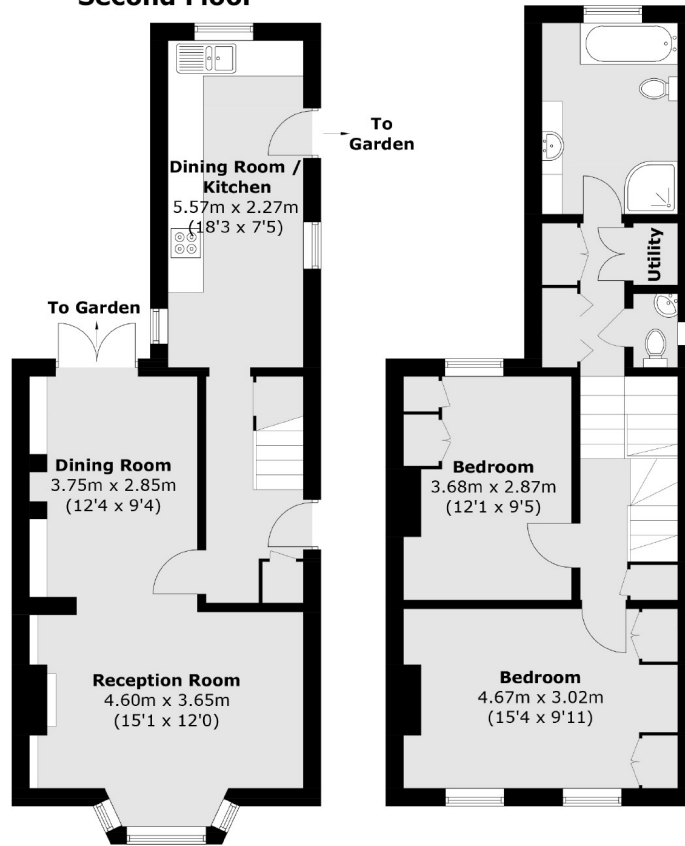
£975,000

A semi-detached three bedroom Victorian family home on a quiet cul-de-sac between Acton Park and Southfield Recreation Ground. The property has a west facing garden, potential to extend on the ground floor (STPP) and is offered with no onward chain.

On the borders of Chiswick and is also within 500 metres of Acton Central station and the shops and amenities of Churchfield Road.



Second Floor



Ground Floor

First Floor

Total area (approx.): 113.6 sq. m (1,222.8 sq. ft)

Robertson Smith & Kempson Acton Sales
137 High Street, Acton,
London, W3 6LY
020 8896 3996
actonsales@robertsonsmithandkempson.co.uk

Energy Rating: F. We aim to make our particulars both accurate and reliable. However they are not guaranteed; nor do they form part of an offer or contract. If you require clarification on any points then please contact us, especially if you're traveling some distance to view. Please note that appliances and heating systems have not been tested and therefore no warranties can be given as to their good working order.